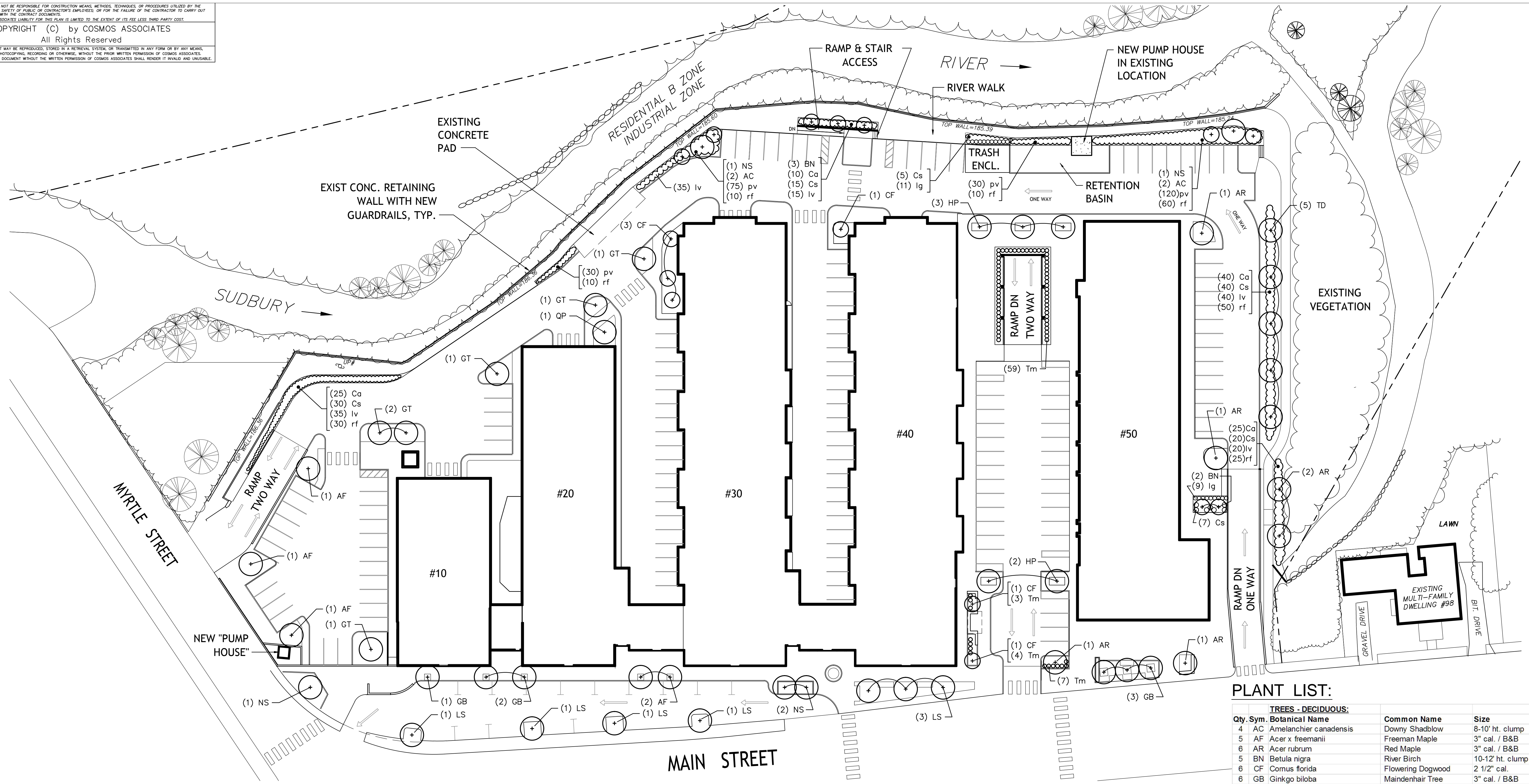


COSMOS ASSOCIATES SHALL NOT BE RESPONSIBLE FOR CONSTRUCTION MEANS, METHODS, TECHNIQUES, OR PROCEDURES UTILIZED BY THE CONTRACTOR, NOR FOR THE SAFETY OF PUBLIC OR CONTRACTOR'S EMPLOYEES, OR FOR THE FAILURE OF THE CONTRACTOR TO CARRY OUT THE WORKING ACCORDANCE WITH THE CONTRACT DOCUMENTS.
 THE EXTENT OF COSMOS ASSOCIATES LIABILITY FOR THIS PLAN IS LIMITED TO THE EXTENT OF ITS FEE LESS THIRD PARTY COST.

COPYRIGHT (C) by COSMOS ASSOCIATES
 All Rights Reserved

NO PART OF THIS DOCUMENT MAY BE REPRODUCED, STORED IN A RETRIEVAL SYSTEM, OR TRANSMITTED IN ANY FORM OR BY ANY MEANS, ELECTRONIC, MECHANICAL, PHOTOCOPYING, RECORDING OR OTHERWISE, WITHOUT THE PRIOR WRITTEN PERMISSION OF COSMOS ASSOCIATES. ANY MODIFICATIONS TO THIS DOCUMENT WITHOUT THE WRITTEN PERMISSION OF COSMOS ASSOCIATES SHALL RENDER IT INVALID AND UNUSABLE.

6/30/2022 10-50 Main-Landscape 6-30-2022.dwg / 10-50 Main St-Landscape 6-30-2022.pdf



PLANTING NOTES:

1. Trees and shrubs shall be uniform, full and bushy, and well branched specimen plants. All plants to be approved by the Land. Arch.
2. Plants shall be balled and burlapped or container grown.
3. Plants to conform to the requirements established in 'American Standards For Nursery Stock', latest edition.
4. Plant beds to receive 3-inch minimum depth of shredded bark mulch. Contractor to submit bark samples for approval.
5. Plant materials shall be guaranteed for 1-year after install.
6. Plant materials shall be field located and approved by the Land. Arch.
7. Plant beds at perennials to have a 6-inch minimum depth of loam. Loam at tree and shrub locations to be depth of root ball.
8. Loam (6" min. depth) and seed all lawn areas and disturbed areas not noted to receive other treatment.
9. Plant substitutions will be allowed based on best availability of nursery stock, with all substitutions to be approved by the Land. Arch.

PLANT LIST:

TREES - DECIDUOUS:			
Qty.	Sym.	Botanical Name	Common Name / Size
4	AC	Amelanchier canadensis	Downy Shadblow 8-10' ht. clump
5	AF	Acer x freemanii	Freeman Maple 3" cal. / B&B
6	AR	Acer rubrum	Red Maple 3" cal. / B&B
5	BN	Betula nigra	River Birch 10-12' ht. clump
6	CF	Cornus florida	Flowering Dogwood 2 1/2" cal.
6	GB	Ginkgo biloba	Maindenhair Tree 3" cal. / B&B
6	GT	Gleditsia triacanthos	Honeylocust 3" cal. / B&B
5	HP	Hydrangea paniculata Limelight	Limelight Hyd. Tree Form 10 gallon pot
7	LS	Liquidambar styraciflua	American Sweetgum 3" cal. / B&B
4	NS	Nyssa sylvatica	Black Gum or Tupelo 2 1/2" cal.
1	QP	Quercus palustris	Pin Oak 3" cal. / B&B
5	TD	Taxodium distichum	Bald Cypress 8 - 10' height
SHRUBS - DECIDUOUS AND EVERGREEN:			
100	Ca	Clethra alnifolia	Summersweet 7 gallon pot
117	Cs	Cornus sericea	Red-osier Dogwood 7 gallon pot
73	Tm	Taxus x media Hicksii	Hick's Yew 36" height
20	Ig	Ilex glabra	Inkberry 7 gallon pot
145	Iv	Ilex verticillata	Winterberry 5 gallon pot
PERENNIALS AND GRASSES:			
255	pv	Panicum virgatum	Switch Grass 3 gallon pot
195	rf	Rudbeckia fulgida var. fulgida	Black-eyed Susan 2 gallon pot



Call DIGSAFE, 1-888-344-7233, for location and marking of all utilities prior to any excavation. Private utilities may require additional marking and investigation.

Cosmos Associates
 Landscape Architects & Site Planners
 5 Longview Street Natick, MA 01760
 508.654.6847 www.cosmosassociates.com



ASHLAND MILLS
 10-50 MAIN ST. ASHLAND, MA

LANDSCAPE PLAN

Date: 6/30/2022
 Revision:
 Scale: 1" = 30' - 0"
 Drawn By: REC
 Checked By: SGC