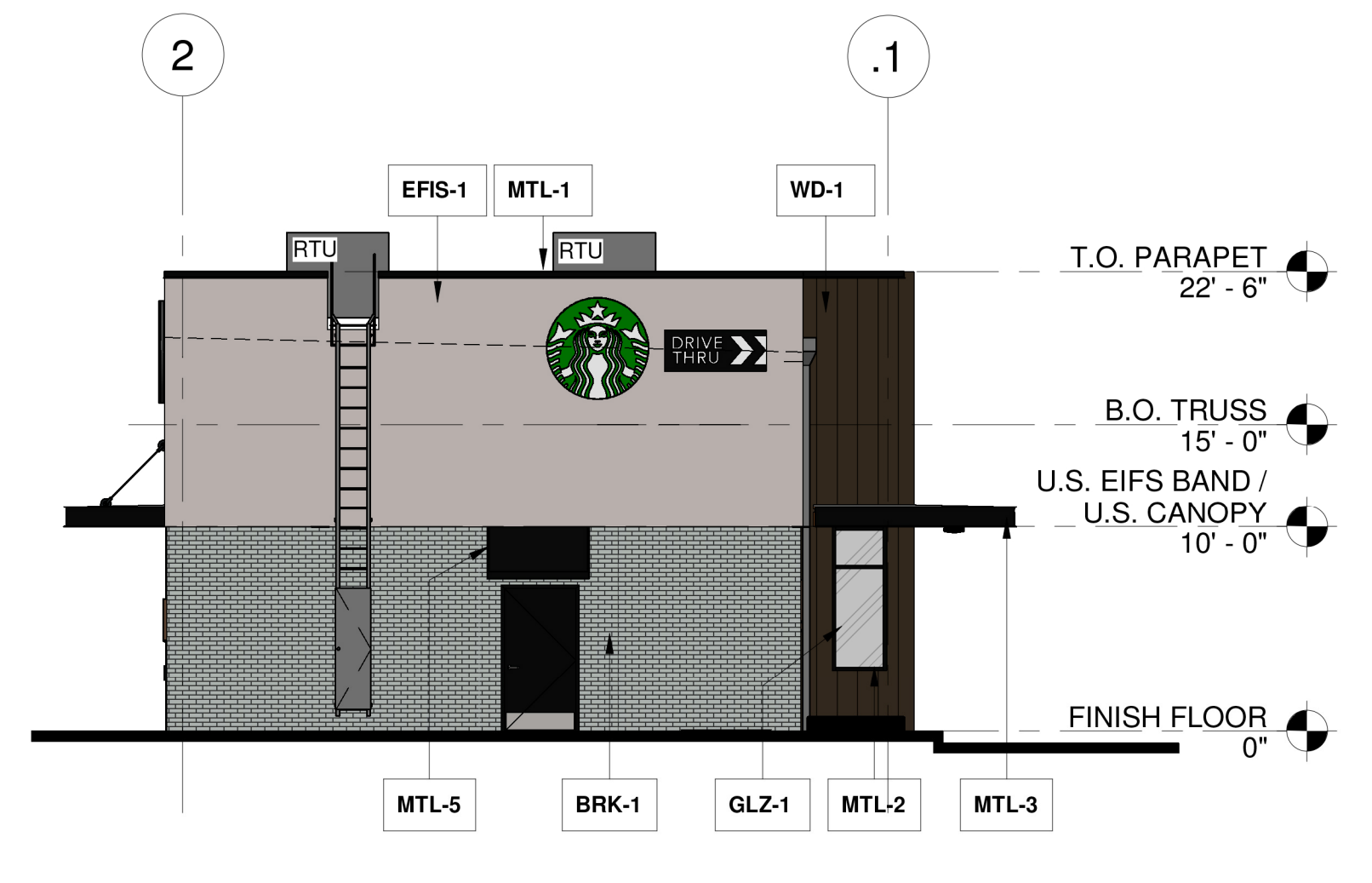


**NORTH ELEVATION**  
 Scale: 1/8" = 1'-0"

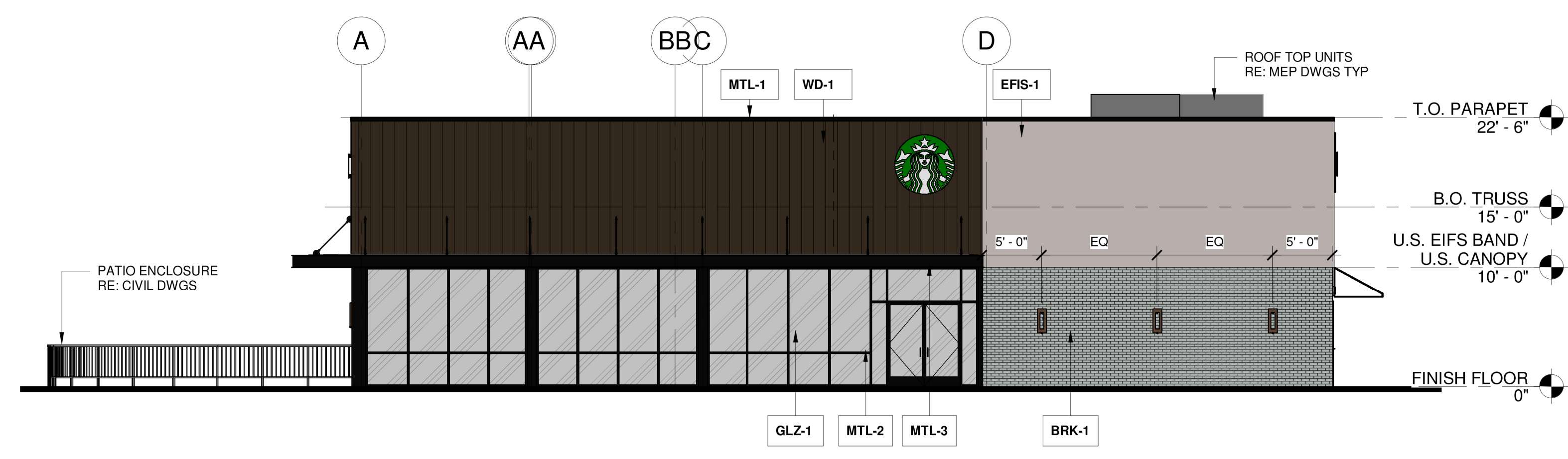


**EAST ELEVATION**  
 Scale: 1/8" = 1'-0"

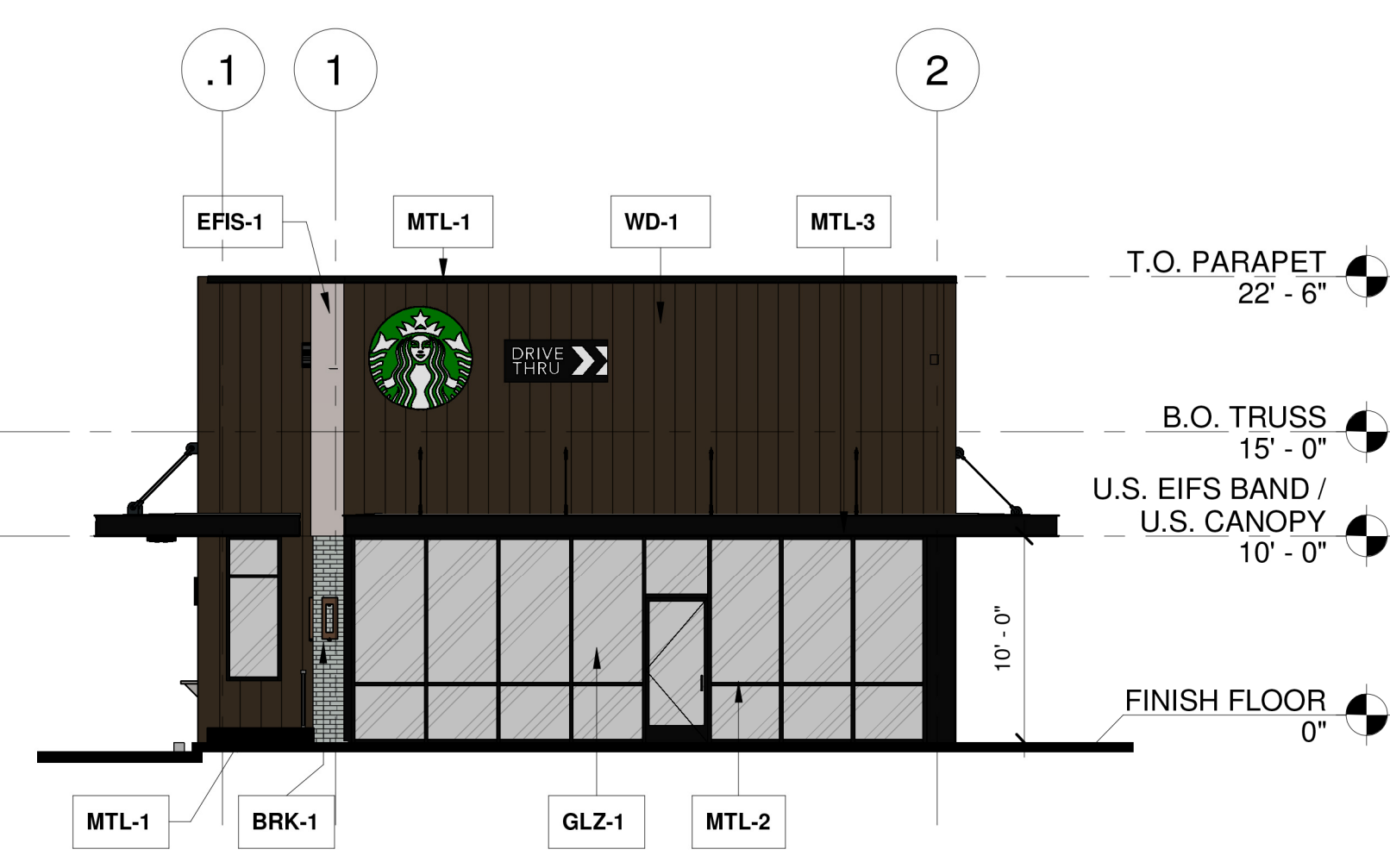
EXTERIOR FINISH SCHEDULE				
NO.	MATERIAL	MFG./FINISH STYLE	COLOR	COMMENTS
BRK-1	FULL BRICK VENEER	MORA CERAMICA, MODULAR 3-5/8" x 2-1/4" x 7-5/8"	SILVER GRAY SMOOTH WITH MATCHING MORTAR	
EPIS-1	EPIS	DRYVIT SANDPEBBLE FINE TEXTURE W/ STRATOTONE COLORANT	STAR-05 1022 ST	
GLZ-1	GLAZING	SOLAR BAN 60 CLEAR	CLEAR	REFER TO SHEET A700 FOR TEMPERED GLASS LOCATIONS
MTL-1	METAL COPING	PRE-FINISHED	TO MATCH RAL#7021 MATTE MT0028-FLAT BLACK	
MTL-2	ALUMINUM STOREFRONT SYSTEM	ANODIZED	TO MATCH RAL#7021 MATTE MT0028-FLAT BLACK	
MTL-3	BRAKE METAL	POWDERCOAT	TO MATCH RAL#7021 MATTE MT0028-FLAT BLACK	
MTL-4	HOLLOW METAL DOOR & FRAME	SHERWIN WILLIAMS PAINTED	TO MATCH RAL#7021 MATTE MT0028-FLAT BLACK	
MTL-5	METAL AWNING	POWDERCOAT	TO MATCH RAL#7021 MATTE MT0028-FLAT BLACK	
WD-1	WOOD SIDING	RESAWN TIMBER CO. SEALED FACE AND BACK 3/4" THICK X 5-3/8" WIDE X 8" X 18" RANDOM LENGTHS	UNAGI-SHOU SUGI BAN W/ DADOS PROFILE	
WD-4	ACCOYA WOOD SIDING @ UNDERSIDE OF CANOPY	TONGUE AND GROOVE PLANK SEALED FACE AND BACK 3/4" THICK X 5-3/8" WIDE X 8'-18" RANDOM LENGTHS	GOBI	

**EXTERIOR ELEVATION NOTES**

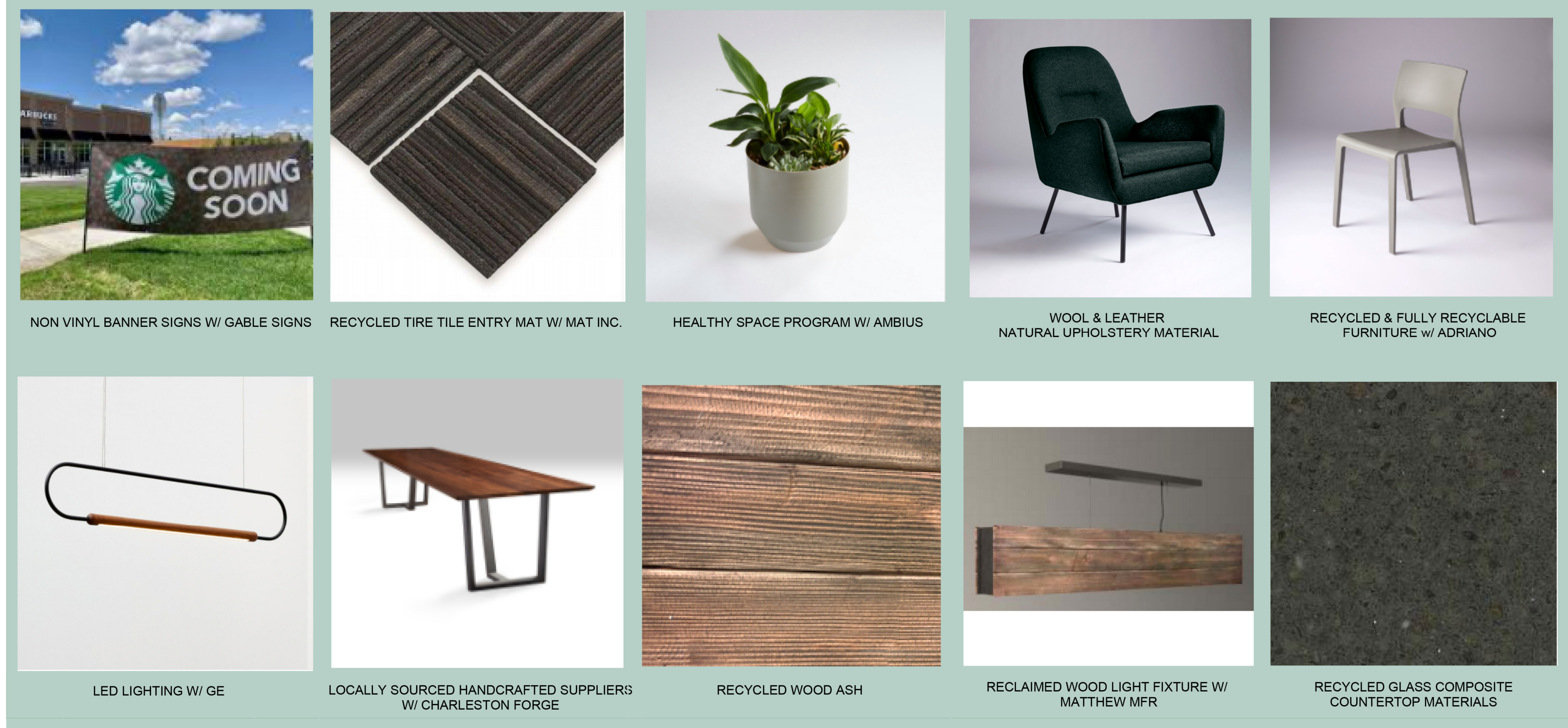
- A. SIGNAGE UNDER SEPERATE PERMIT
- B. GENERAL CONTRACTOR TO COORDINATE AND SCHEDULE SIGNAGE INSTALLATION WITH THE SIGNAGE CONTRACTOR PROVIDING A MINIMUM SCHEDULING NOTICE OF 4 WEEKS AND 1 WEEK PRIOR TO SCHEDULE DATE OF INSTALLATION. CONSTRUCTION MANAGER TO PROVIDE GENERAL CONTRACTOR WITH SIGNAGE CONTRACTOR CONTACT INFORMATION.
- C. GENERAL CONTRACTOR SHALL COORDINATE WITH ELECTRICAL CONTRACTOR TO FURNISH AND INSTALL ELECTRICAL CIRCUITS INCLUDING ALL CONDUIT, WIRE, CONNECTIONS, AND BREAKER AT PANEL BOARD NECESSARY TO SERVE SIGNAGE.
- D. GENERAL CONTRACTOR TO PROVIDE FIRE TREATED WOOD STUD BLOCKING, OR EQUIVALENT TO SUPPORT SIGNAGE.
- E. SIGNAGE CONTRACTOR SHALL VERIFY SIZE AND LOCATION OF ANY AND ALL ALLOWABLE MONUMENT OR POLE SIGNAGE AND PROVIDE SHOP DRAWING(S) PRIOR TO FABRICATION TO STARBUCKS DESIGNER FOR APPROVAL.
- F. SIGNAGE CONTRACTOR TO INSTALL SIGNAGE IN COMPLIANCE WITH LOCAL CODES AND OBTAIN PERMIT
- G. SIGNAGE CONTRACTOR TO SUPPLY SHOP DRAWINGS TO CONSTRUCTION MANAGER AND TO THE GENERAL CONTRACTOR AS NEEDED. GENERAL CONTRACTOR TO NOTIFY CONSTRUCTION MANAGER IMMEDIATELY IF SHOP DRAWINGS OR INSTALLATION IS IN DISCREPANCY WITH ARCHITECTURAL DRAWINGS.
- H. ALL EXTERIOR UTILITY METER PANELS SHALL BE PAINTED TO MATCH ADJACENT SURFACES.
- I. GENERAL CONTRACTOR TO FINISH SAMPLES TO OWNER AND ARCHITECT FOR FINAL APPROVAL PRIOR TO INSTALLATION.



**SOUTH ELEVATION**  
 Scale: 1/8" = 1'-0"



**WEST ELEVATION**  
 Scale: 1/8" = 1'-0"



**Greener Stores/ Store Sustainability Standards**  
 Starbucks' Greener Stores initiative aims to produce more sustainable stores not just through construction, but in the day-to-day operations of a location as well.  
 Starbucks is no longer using LEED for store certification. LEED strategies and best practices are embedded in their design and construction practices, though documentation is no longer required.

- A few examples of Green Building Specs used:**
- Recycled tire entry mats
  - Natural wood and leather upholstery materials
  - Recycled and fully recyclable furniture
  - LED lighting
  - Low flow restroom fixture and equipment such as dishwashers
  - Recycled glass composite countertop materials
  - Sustainably sourced wood siding
  - Minimizing the use of ozone depleting refrigerants
  - Bike racks
  - Use of Low VOC products
  - Low-e glazing



**A few examples of how day-to-day operations meet these goals are:**

- Offering discounts when customers bring in their reusable cups
- Encourage in store consumer recycling using signage and appropriate receptacles
- Composting waste is incorporated into the waste program where possible
- Reduce waste and packaging by donating unsold food to local food banks
- Strawless lids

OWNER / CLIENT  
 Retail Ashland LLC

PROJECT  
 STARBUCKS SHELL

399 UNION ST  
 ASHLAND, MA 93036

DRAWING TITLE  
 EXTERIOR ELEVATIONS

DRAWING INFORMATION  
 Job Number: 222089  
 Checked By: KTB & AJ  
 Drawn By: AJ

DRAWING NUMBER  
**A400**

Copyright © 2019 by BKA Architects, Inc. The architectural plans, drawings, designs, specifications and other arrangements on this sheet are and shall remain the property of BKA Associates, Inc. No part thereof shall be copied, reproduced or used in connection with any work or project, other than the specified project for which they have been prepared and developed, without the express knowledge and written consent of BKA Associates, Inc.