

501 Pond Street

TRASK DEVELOPMENT

ARCHITECT



101 SUMMER ST BOSTON MA 02110

CONSULTANT

STAMP

KEY PLAN

MARK	10/20/22 DATE	PLANNING BOARD DESCRIPTION
------	------------------	-------------------------------

PROJECT NUMBER: 221061.00

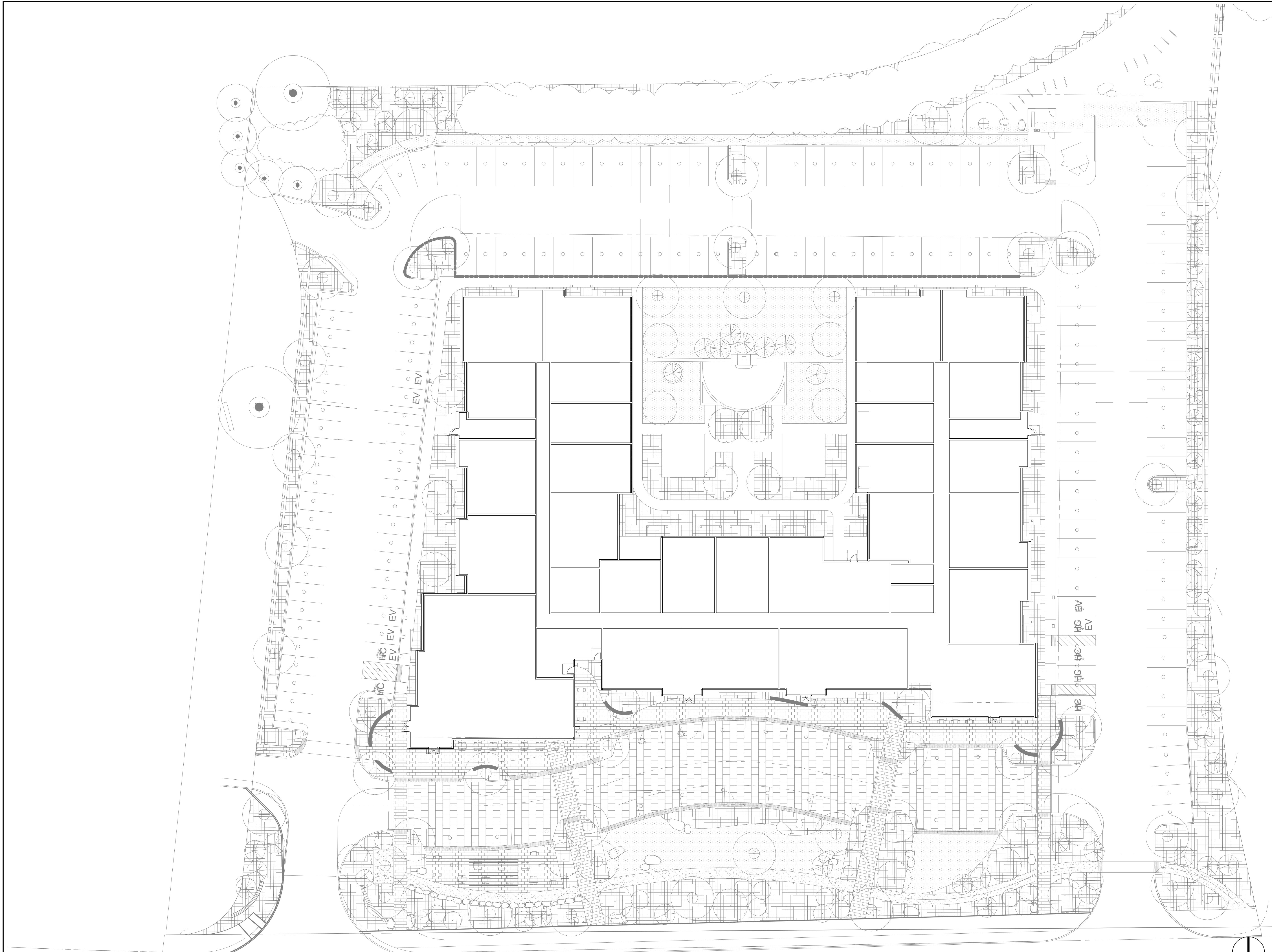
DRAWN BY: Author

CHECKED BY: Checker

SHEET TITLE

SITE PLAN

A-100



1 SITE PLAN
1" = 20'-0"

7/21/2022 1:59:28 PM

501 Pond Street

TRASK DEVELOPMENT

ARCHITECT



101 SUMMER ST BOSTON MA 02110

CONSULTANT

STAMP

KEY PLAN

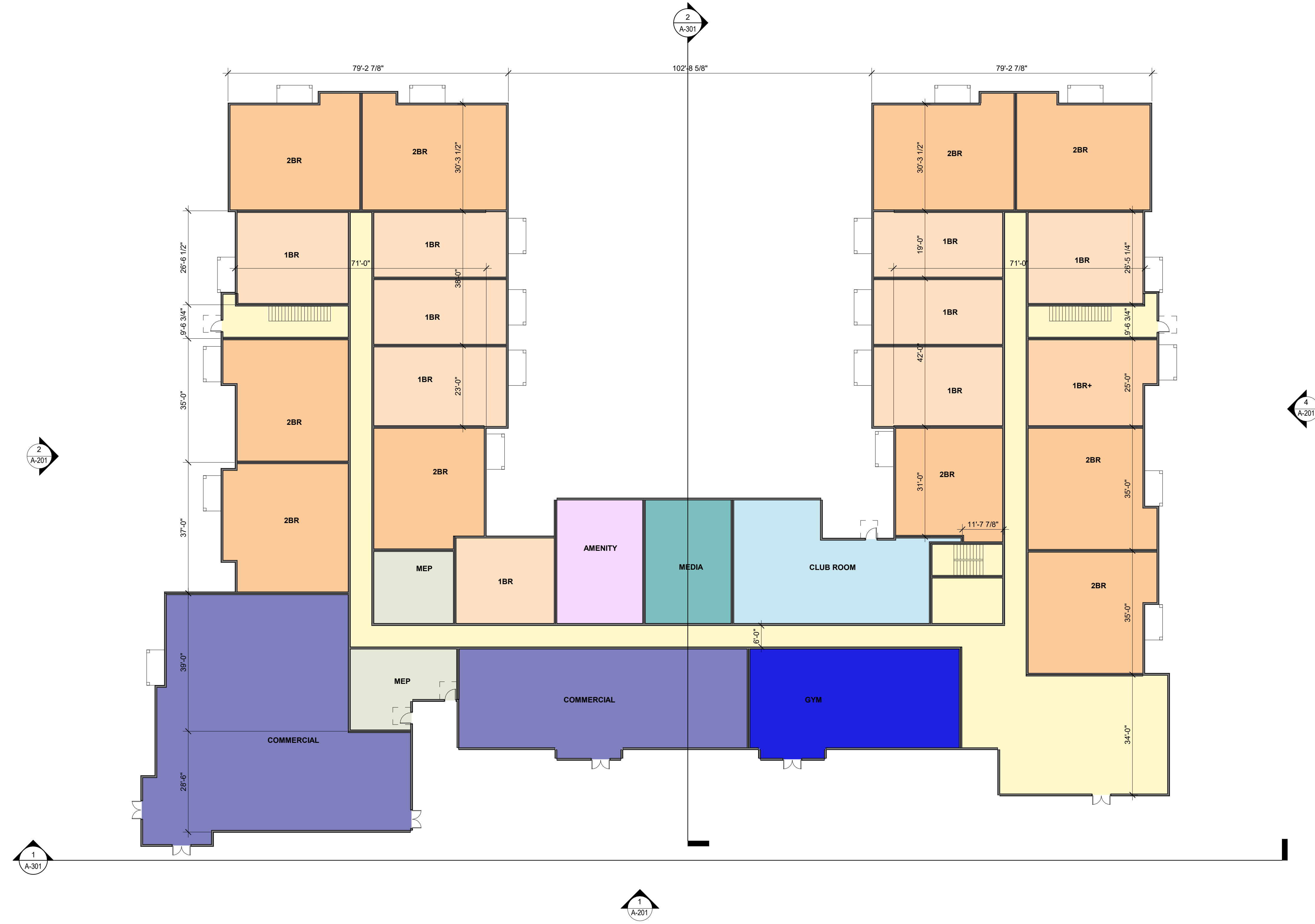
1	10/20/22	PLANNING BOARD
MARK	DATE	DESCRIPTION

PROJECT NUMBER: 221061.00
 DRAWN BY: MRM
 CHECKED BY: MRM

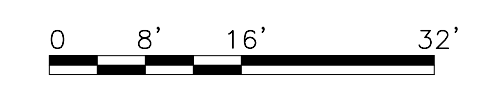
SHEET TITLE

FIRST FLOOR PLAN

A-101



1 LEVEL 1 FLOOR PLAN
 1/16" = 1'-0"



501 Pond Street

TRASK DEVELOPMENT

ARCHITECT



101 SUMMER ST BOSTON MA 02110

CONSULTANT

STAMP

KEY PLAN

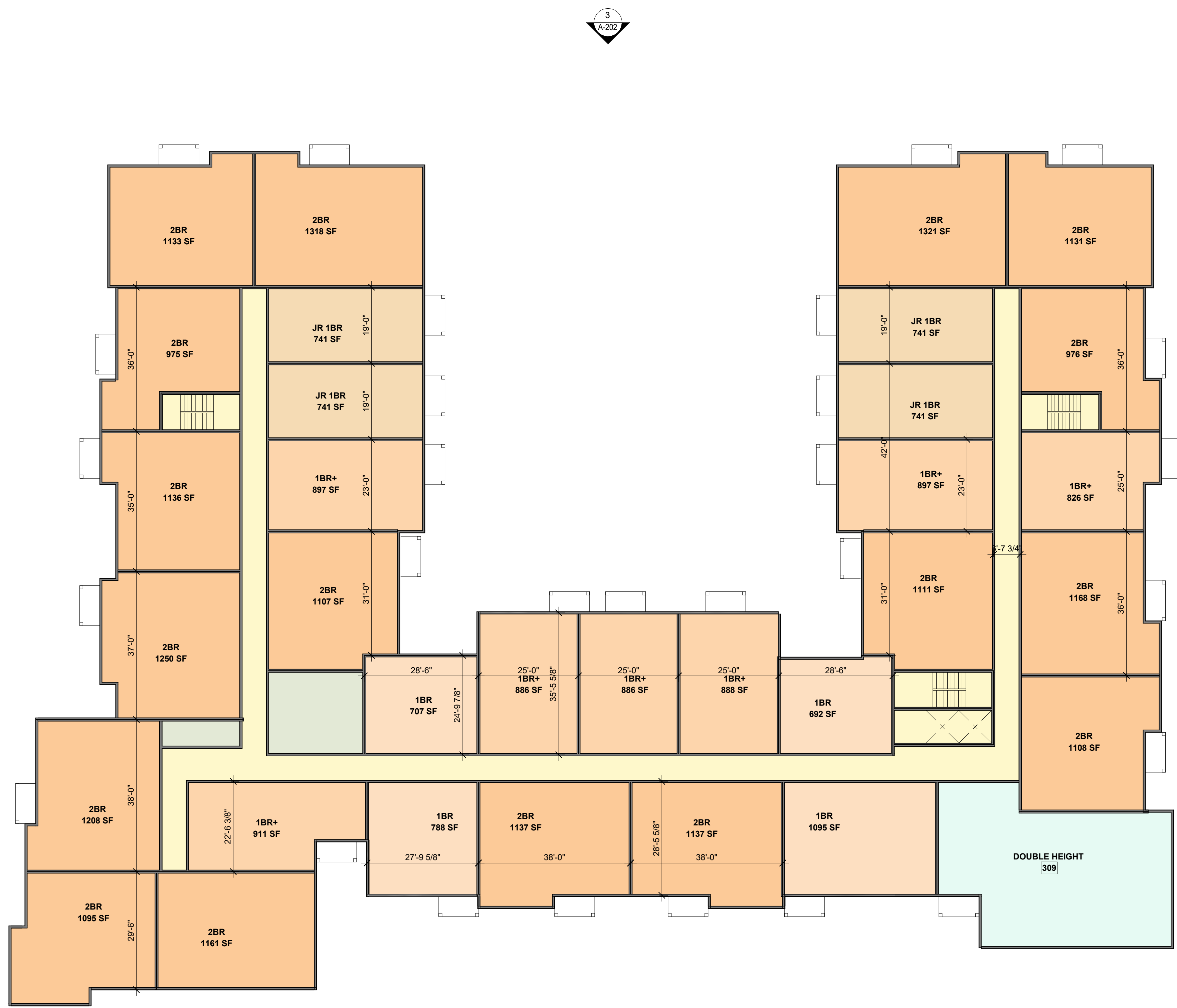
MARK	DATE	DESCRIPTION
1	10/20/22	PLANNING BOARD

PROJECT NUMBER: 221061.00
 DRAWN BY: MRM
 CHECKED BY: MRM

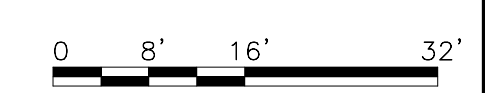
SHEET TITLE

SECOND THROUGH
 FOURTH FLOOR PLAN

A-102



1 LEVEL 2 FLOOR PLAN
 1/16" = 1'-0"



501 POND STREET

TRASK DEVELOPMENT

ARCHITECT



101 SUMMER ST BOSTON MA 02110

CONSULTANT

STAMP

KEY PLAN

MARK	10/20/22	PLANNING BOARD
	DATE	DESCRIPTION

PROJECT NUMBER: 000000.00

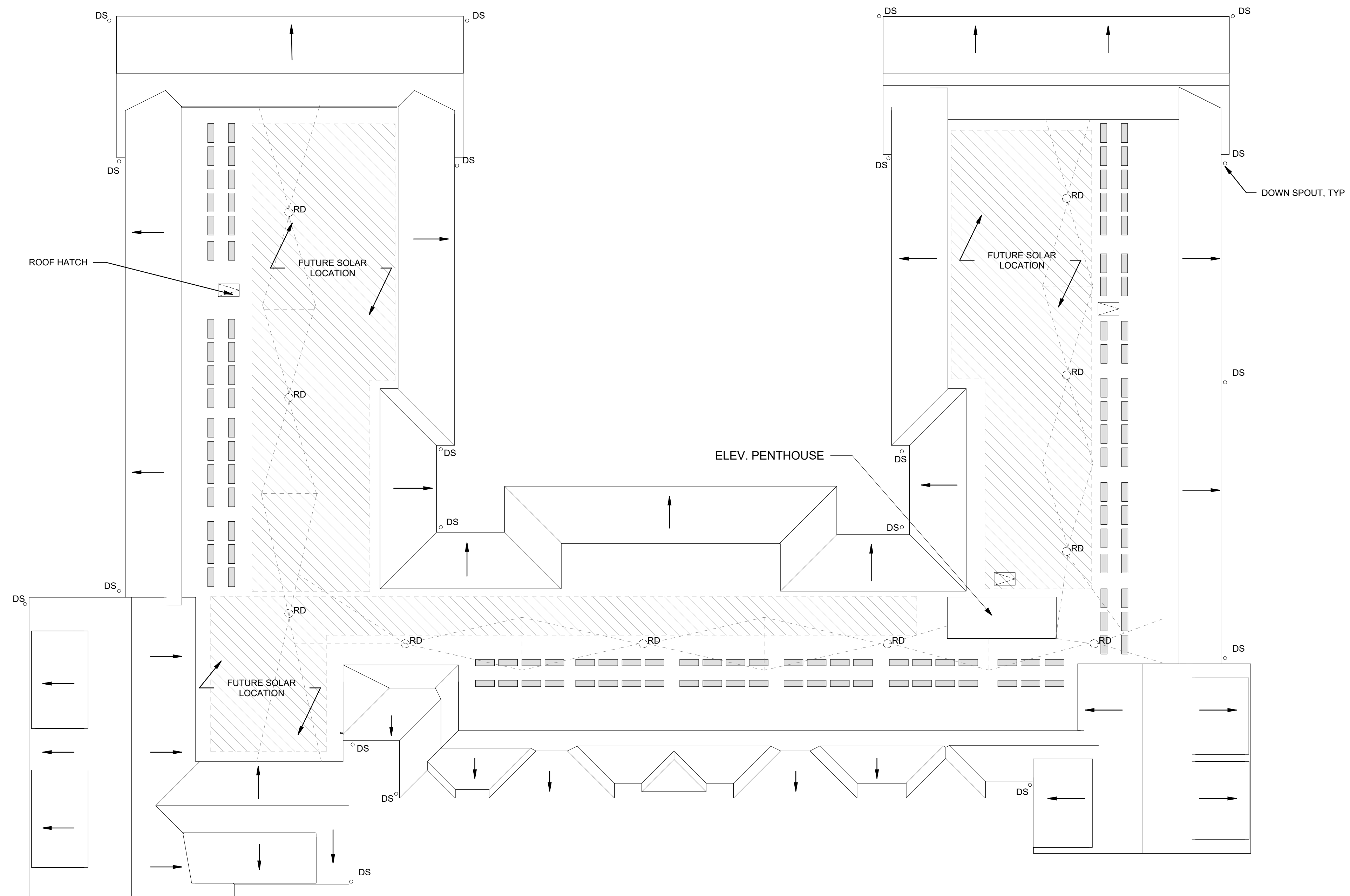
DRAWN BY: Author

CHECKED BY: Checker

SHEET TITLE

ROOF PLAN

A-103



1 ROOF
1/16" = 1'-0"



501 Pond Street

TRASK DEVELOPMENT

ARCHITECT



101 SUMMER ST BOSTON MA 02110

CONSULTANT

STAMP

KEY PLAN

MARK	DATE	DESCRIPTION
1	10/20/22	PLANNING BOARD

PROJECT NUMBER: 221061.00
 DRAWN BY: MRM
 CHECKED BY: MRM

SHEET TITLE

EXTERIOR ELEVATIONS

A-201



4 NORTHWEST ELEVATION
 3/32" = 1'-0"



2 SOUTHEAST ELEVATION
 3/32" = 1'-0"



1 NORTHEAST ELEVATION
 3/32" = 1'-0"

501 Pond Street

TRASK DEVELOPMENT

ARCHITECT



101 SUMMER ST BOSTON MA 02110

CONSULTANT

STAMP

KEY PLAN

MARK	DATE	DESCRIPTION
1	10/20/22	PLANNING BOARD

PROJECT NUMBER: 221061.00
 DRAWN BY: MRM
 CHECKED BY: MRM

SHEET TITLE

EXTERIOR ELEVATIONS

A-202



3 SOUTHWEST ELEVATION
 3/32" = 1'-0"



2 NORTHWEST ELEVATION IN COURTYARD
 3/32" = 1'-0"



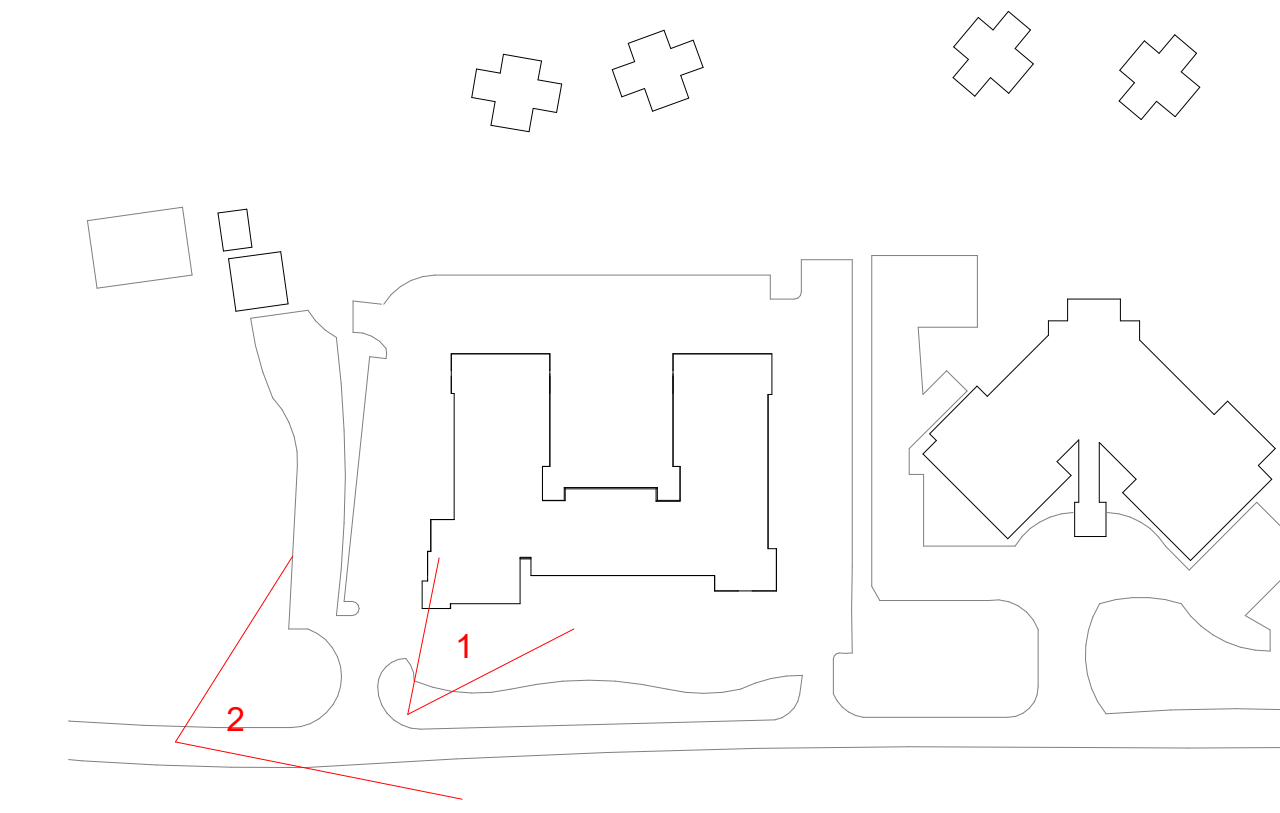
1 SOUTHEAST ELEVATION IN COURTYARD
 3/32" = 1'-0"



VIEW FROM POND STREET - SITE ENTRY



VIEW FROM POND STREET - COMMERCIAL



501 Pond Street

TRASK DEVELOPMENT

ARCHITECT

E-ICON
ARCHITECTURE

101 SUMMER ST BOSTON MA 02110

CONSULTANT

STAMP

KEY PLAN

MARK	DATE	DESCRIPTION
1	11/09/22	PLANNING BOARD

PROJECT NUMBER: 221061.00
DRAWN BY: MRM
CHECKED BY: MRM

SHEET TITLE

PERSPECTIVES

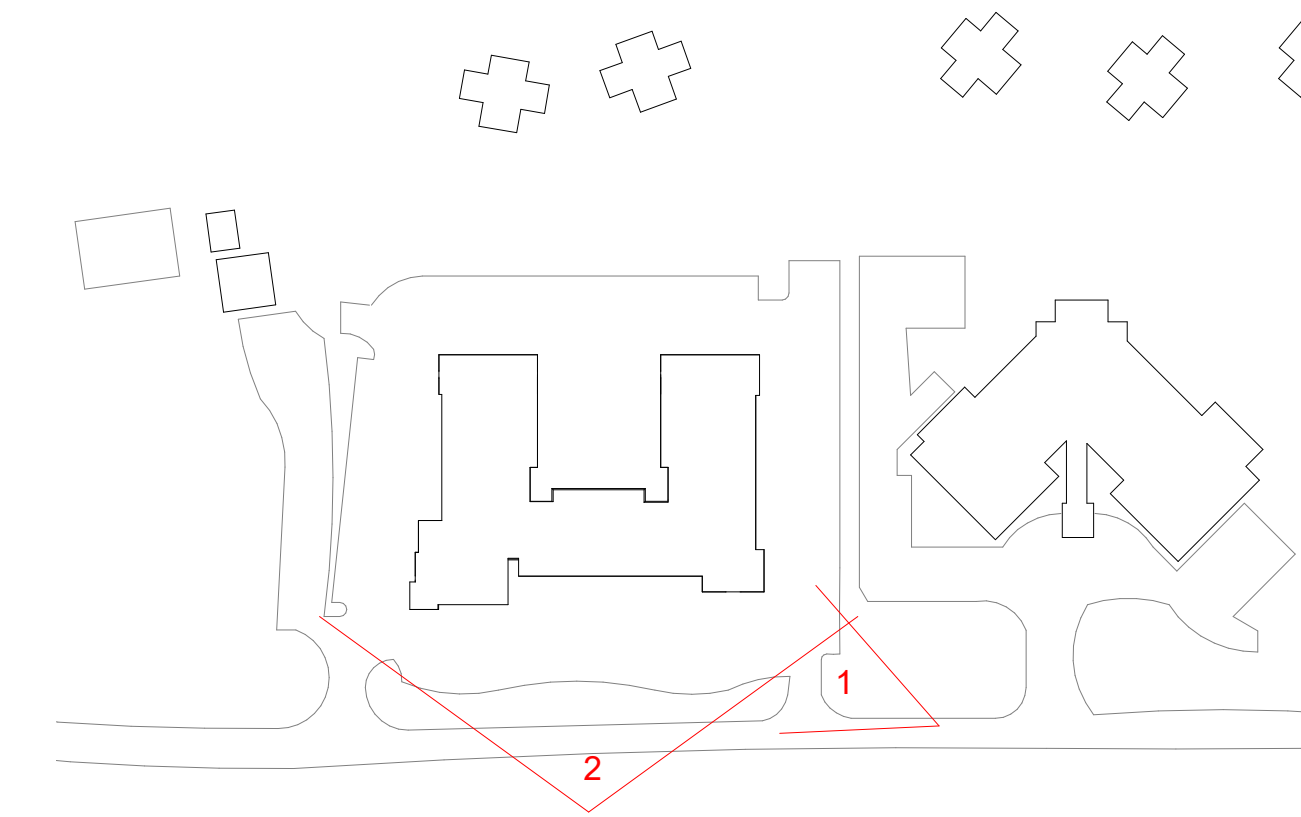
A-203



VIEW FROM POND STREET - BUILDING ENTRY



POND STREET ELEVATION



501 Pond Street

TRASK DEVELOPMENT

ARCHITECT

E-ICON
ARCHITECTURE

101 SUMMER ST BOSTON MA 02110

CONSULTANT

STAMP

KEY PLAN

1	11/09/22	PLANNING BOARD
MARK	DATE	DESCRIPTION

PROJECT NUMBER: 221061.00

DRAWN BY: MRM

CHECKED BY: MRM

SHEET TITLE

PERSPECTIVES

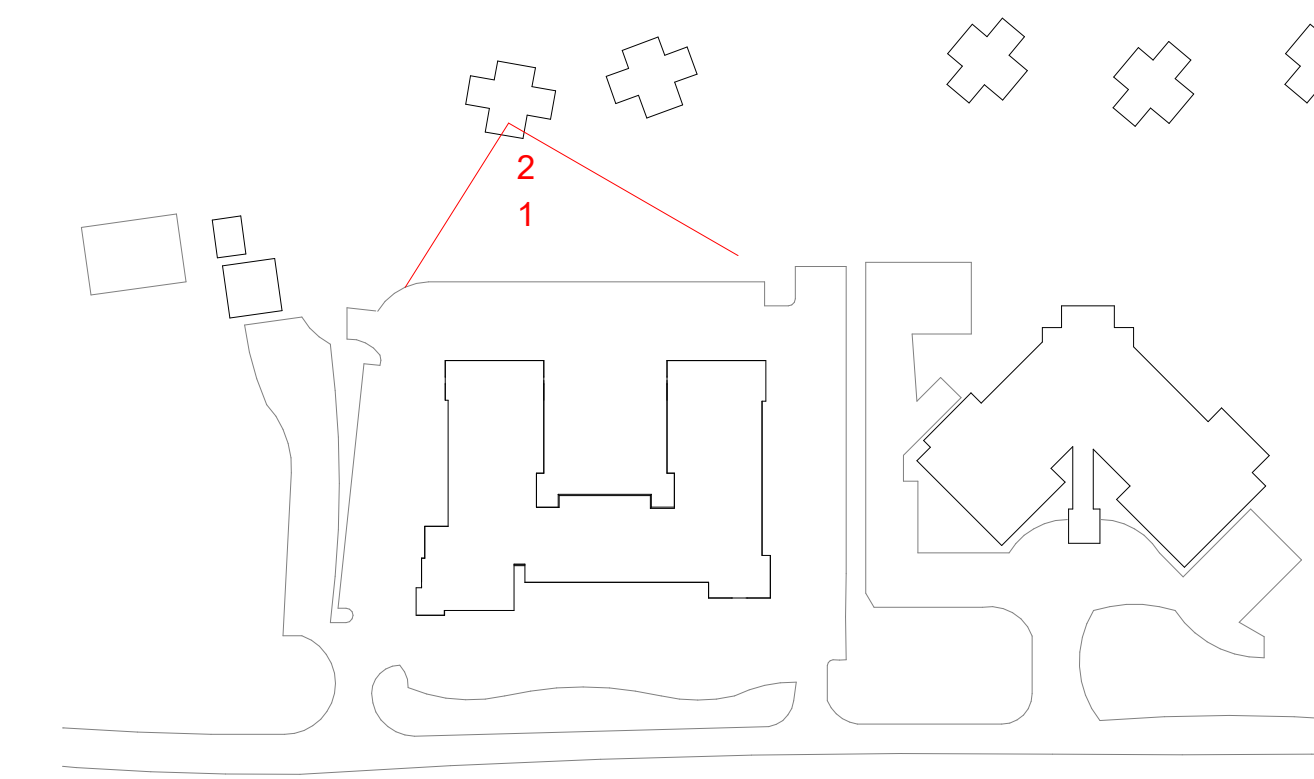
A-204



VIEW FROM NEIGHBORS - GROUND LEVEL



VIEW FROM NEIGHBORS - SECOND FLOOR



501 Pond Street

TRASK DEVELOPMENT

ARCHITECT



101 SUMMER ST BOSTON MA 02110

CONSULTANT

STAMP

KEY PLAN

MARK	10/20/22 DATE	PLANNING BOARD DESCRIPTION

PROJECT NUMBER: 221061.00

DRAWN BY: Author

CHECKED BY: Checker

SHEET TITLE

PERSPECTIVES

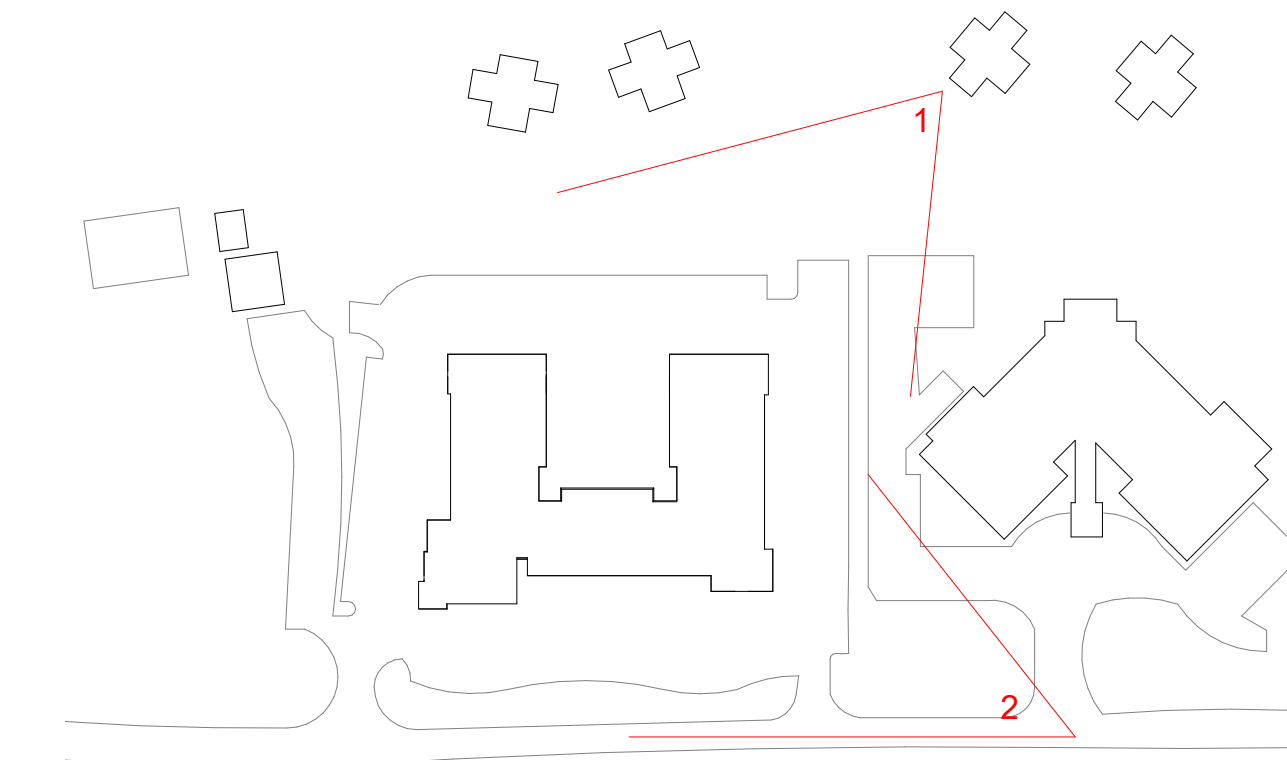
A-205



VIEW FROM NEIGHBORS - SECOND FLOOR



VIEW FROM POND STREET



501 Pond Street

TRASK DEVELOPMENT

ARCHITECT



101 SUMMER ST BOSTON MA 02110

CONSULTANT

STAMP

KEY PLAN

MARK	10/20/22 DATE	PLANNING BOARD DESCRIPTION

PROJECT NUMBER: 221061.00
 DRAWN BY: Author
 CHECKED BY: Checker

SHEET TITLE

PERSPECTIVES

A-206

501 Pond Street

TRASK DEVELOPMENT

ARCHITECT

E-ICON
ARCHITECTURE
101 SUMMER ST BOSTON MA 02110

CONSULTANT

STAMP

KEY PLAN



MARK	DATE	DESCRIPTION
	10/20/22	PLANNING BOARD

PROJECT NUMBER: 221061.00
DRAWN BY: Author
CHECKED BY: Checker

SHEET TITLE

PERSPECTIVE
OVERLAY

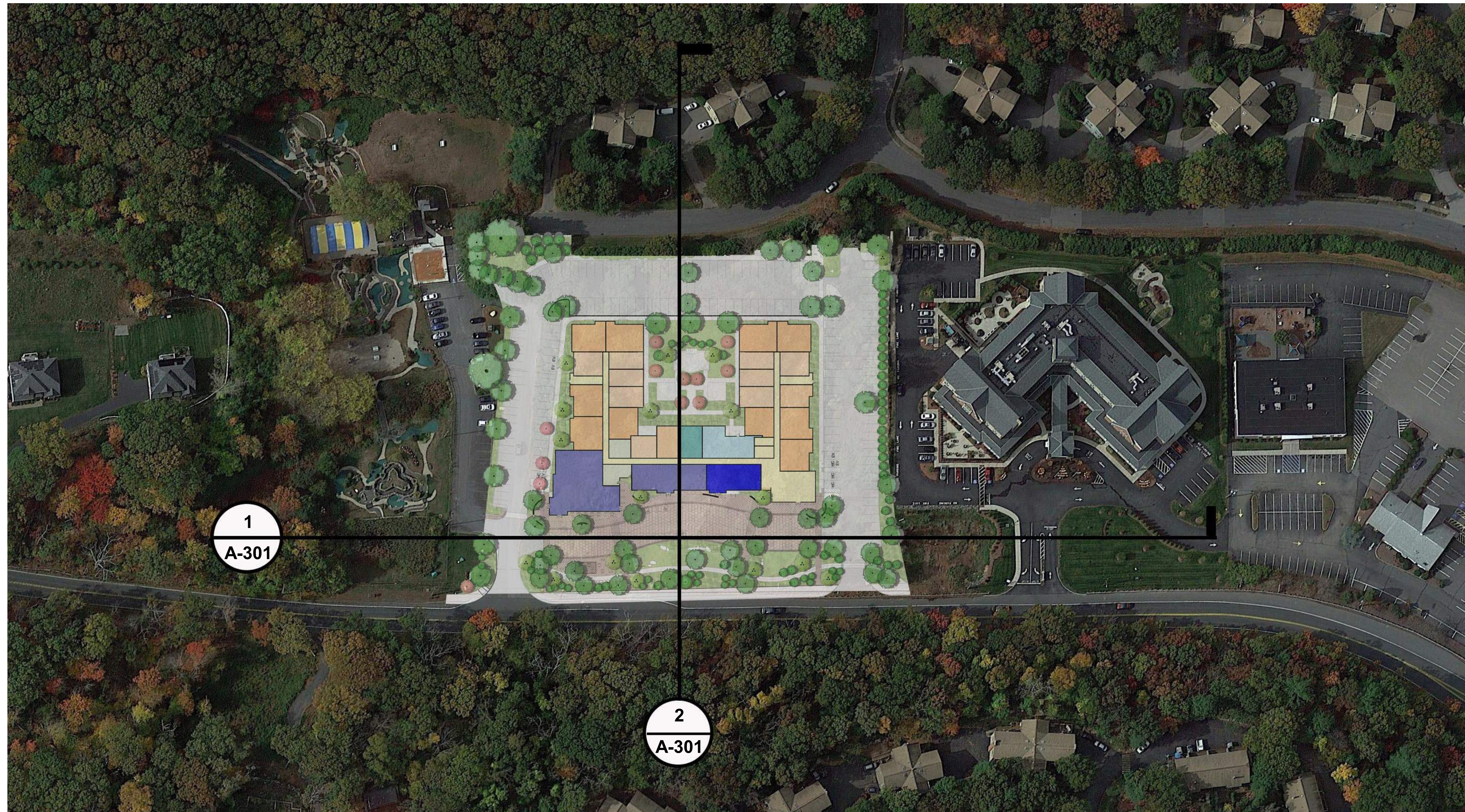
A-207



1 NORTH-SOUTH SECTION
1" = 10'-0"



2 EAST-WEST SECTION
1" = 10'-0"



501 Pond Street

TRASK DEVELOPMENT

ARCHITECT



101 SUMMER ST BOSTON MA 02110

CONSULTANT

STAMP

KEY PLAN

MARK	DATE	DESCRIPTION
	10/20/22	PLANNING BOARD

PROJECT NUMBER: 221061.00
DRAWN BY: Author
CHECKED BY: Checker

SHEET TITLE

BUILDING SECTIONS

A-301

501 Pond Street

TRASK DEVELOPMENT

ARCHITECT



101 SUMMER ST BOSTON MA 02110

CONSULTANT

STAMP

KEY PLAN

MARK	DATE	DESCRIPTION
1	10/20/22	PLANNING BOARD

PROJECT NUMBER: 221061.00

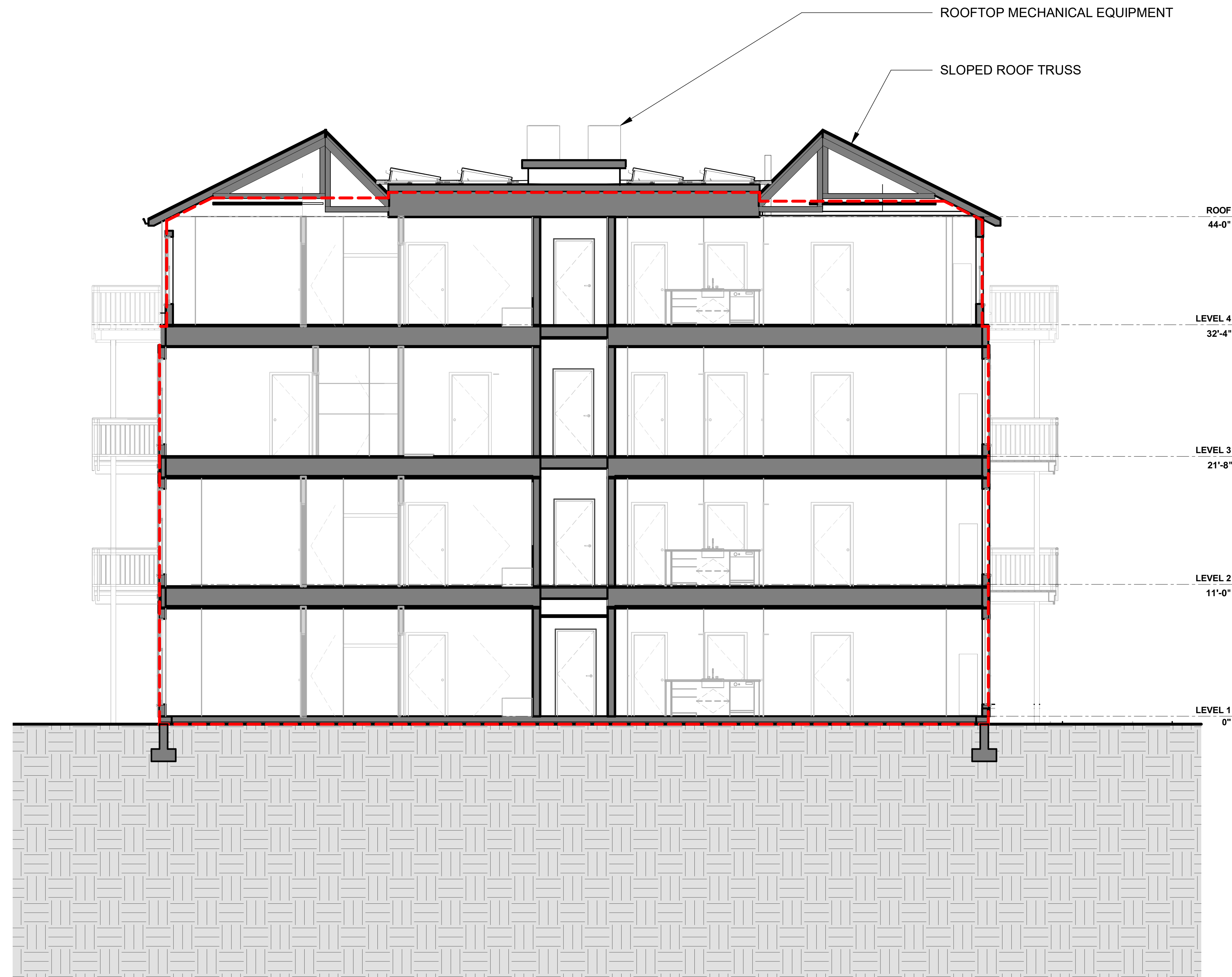
DRAWN BY: Author

CHECKED BY: Checker

SHEET TITLE

TYPICAL BUILDING SECTION

A-302



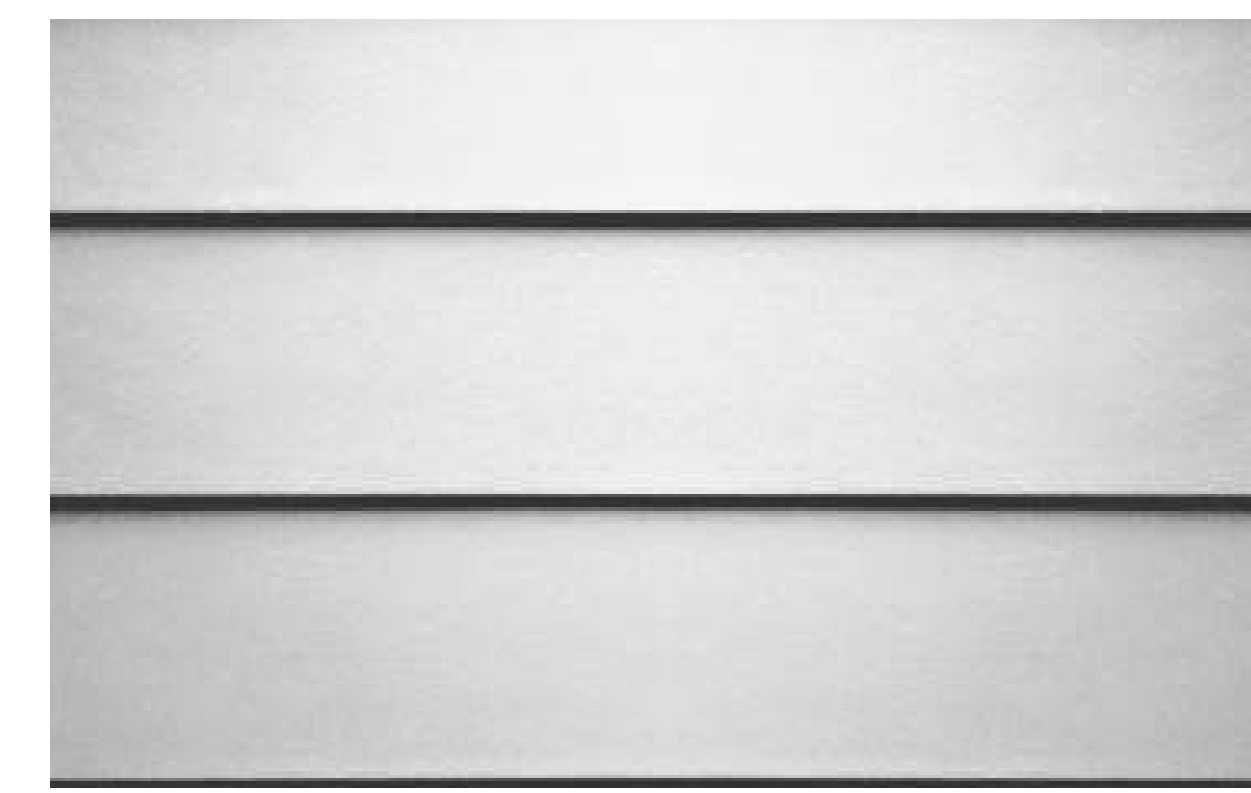
1 BUILDING SECTION
3/16" = 1'-0"



PERSPECTIVE



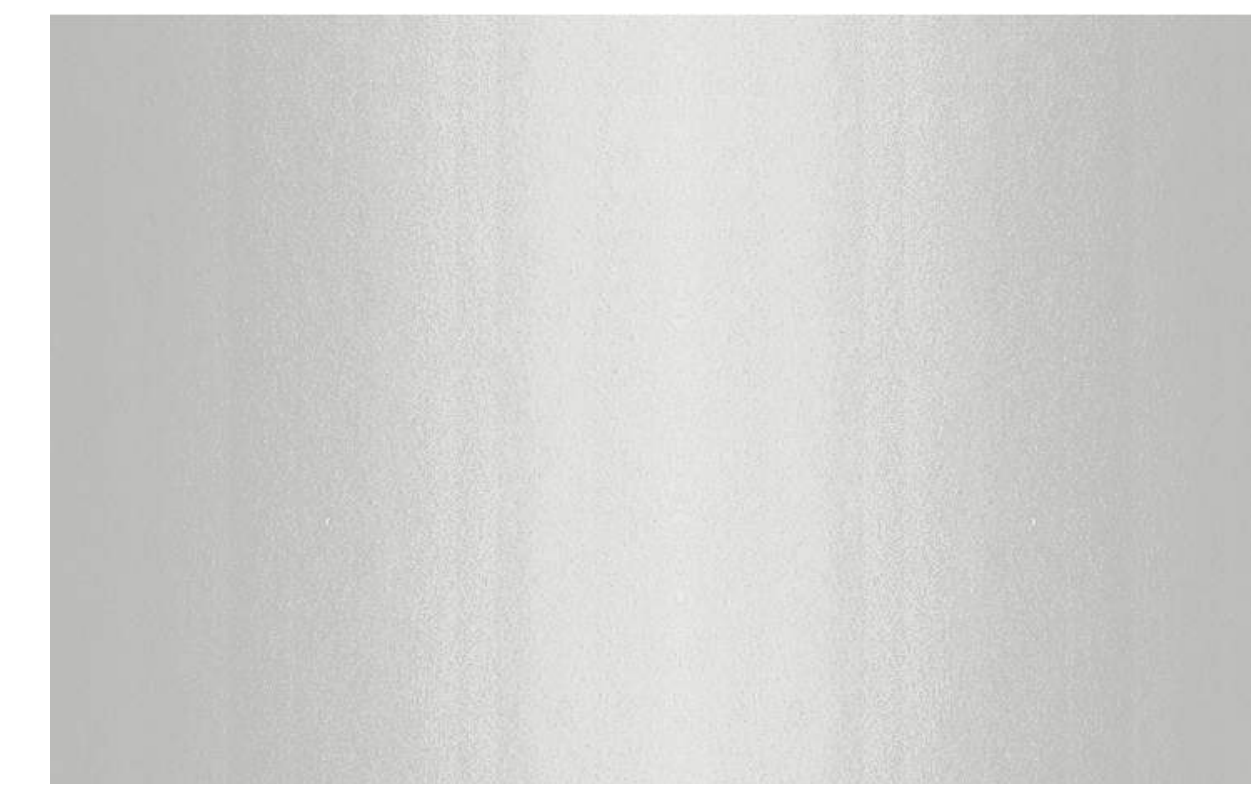
1 FIBER CEMENT SIDING:
BOOTHBAY BLUE



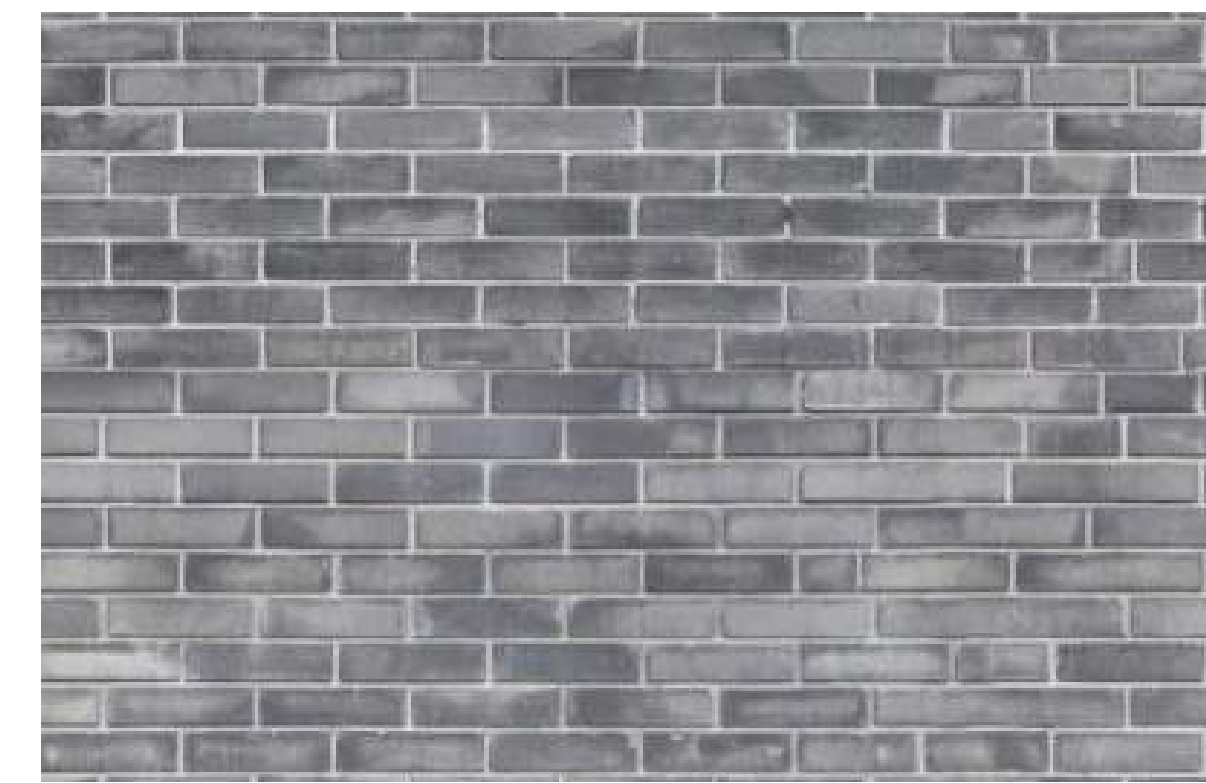
3 FIBER CEMENT SIDING/TRIM:
ARCTIC WHITE



2 FIBER CEMENT SIDING:
GRAY SLATE



4 FIBER CEMENT PANEL/
BOARD & BATTEN
ARCTIC WHITE



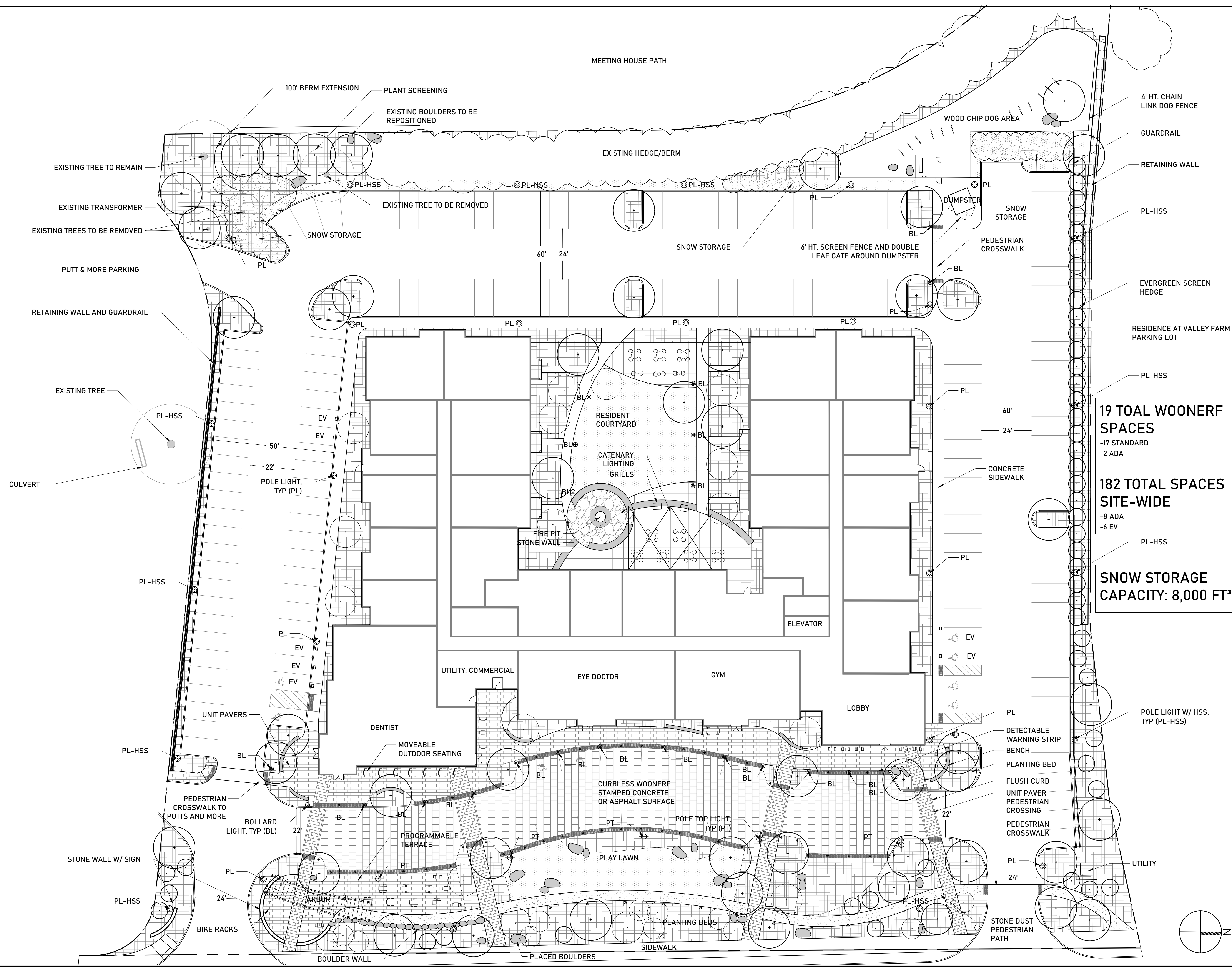
5 BRICK VENEER
GRAY



6 RAILINGS
WHITE

7 WINDOWS
WHITE

6/23/2022 9:15:16 AM - T:\217 501 POND STREET W TRASK & ICON\CONSTRUCTION DRAWINGS\CURRENT CWDG DRAWINGS\REFSVR_LINEWORK.DWG - FERNANDO SOUSA



19 TOAL WOONERF SPACES
 -17 STANDARD
 -2 ADA

182 TOTAL SPACES SITE-WIDE
 -8 ADA
 -6 EV

SNOW STORAGE CAPACITY: 8,000 FT³

501 POND STREET
 ASHLAND, MA

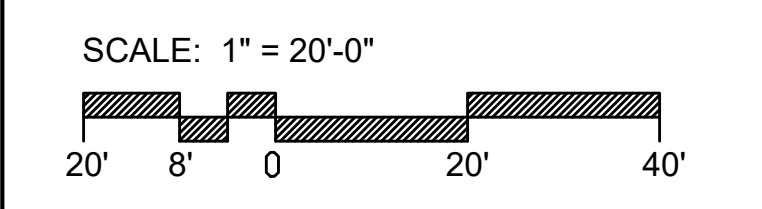


ARCHITECT
E-ICON ARCHITECTURE
 101 SUMMER ST BOSTON MA 02110

CONSULTANT
 Copley Wolff Design Group
 Landscape Architects & Planners
 www.copley-wolff.com

STAMP

KEY PLAN

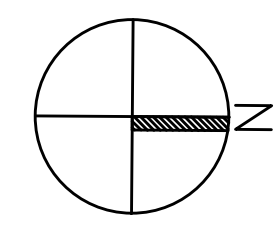


MARK	DATE	DESCRIPTION
	06/23/2022	
	PROJECT NUMBER: 2217.000	
	DRAWN BY: IR, FS, AD	
	CHECKED BY: IR	

SHEET TITLE

Landscape Materials Plan

L-100



6/23/2022 9:29:24 AM - T:\217 501 POND STREET W TRASK & ICON\CONSTRUCTION DRAWINGS\CURRENT CWDG DRAWINGS\REFS\XREFS\PLANTING.DWG - FERNANDO SOUSA

501 POND STREET

ASHLAND, MA

Trask
DEVELOPMENT

ARCHITECT

E-ICON
ARCHITECTURE

101 SUMMER ST BOSTON MA 02110

CONSULTANT

CW
DG Copley Wolff Design Group
Landscape Architects & Planners
www.copley-wolff.com

STAMP

KEY PLAN

SCALE: 1" = 20'-0"



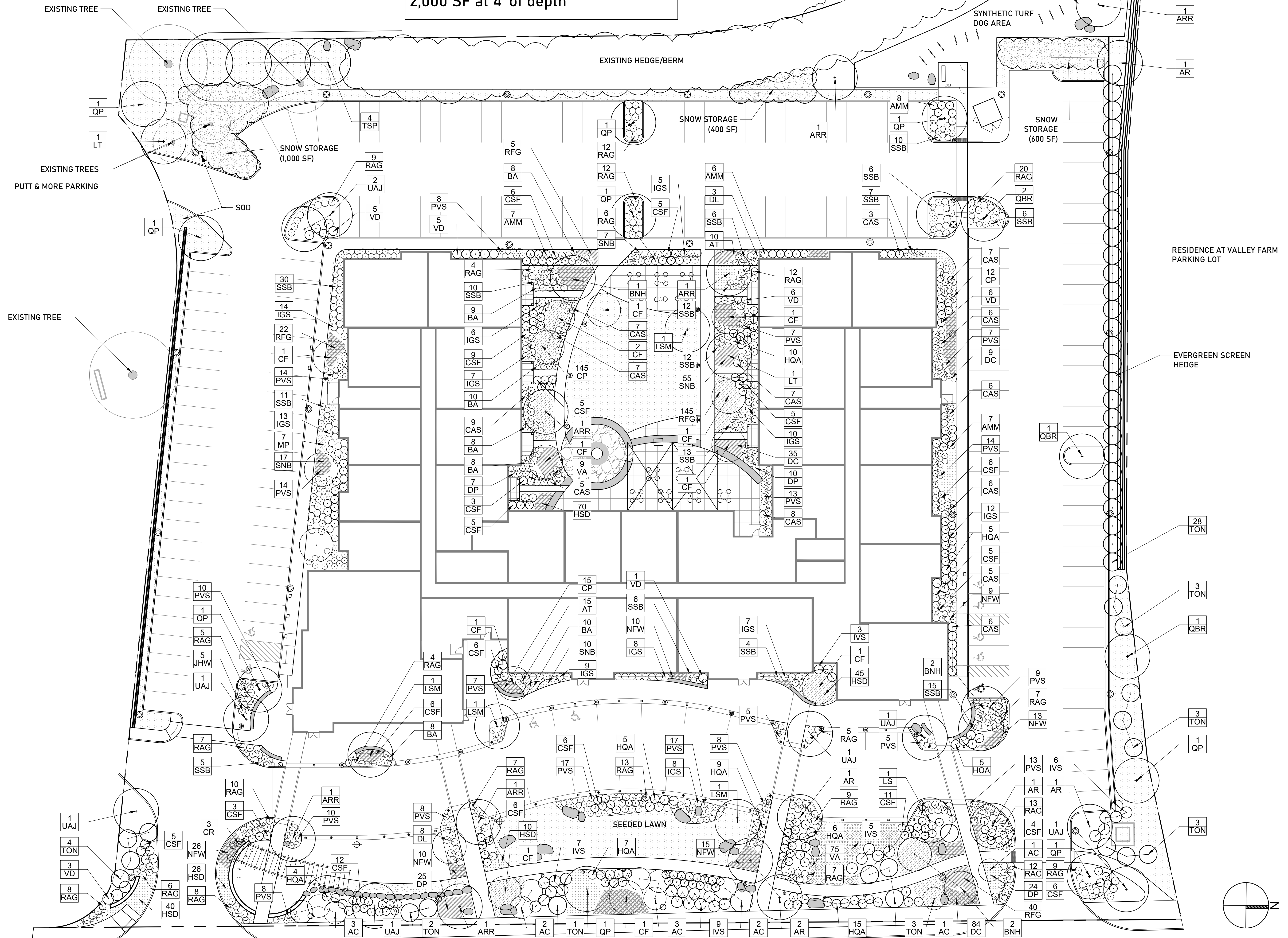
MARK DATE DESCRIPTION

MARK	DATE	DESCRIPTION
	06/23/2022	
		PROJECT NUMBER: 2217.000
		DRAWN BY: IR, FS, AD
		CHECKED BY: IR

SHEET TITLE

Landscape
Planting
Plan

L-200



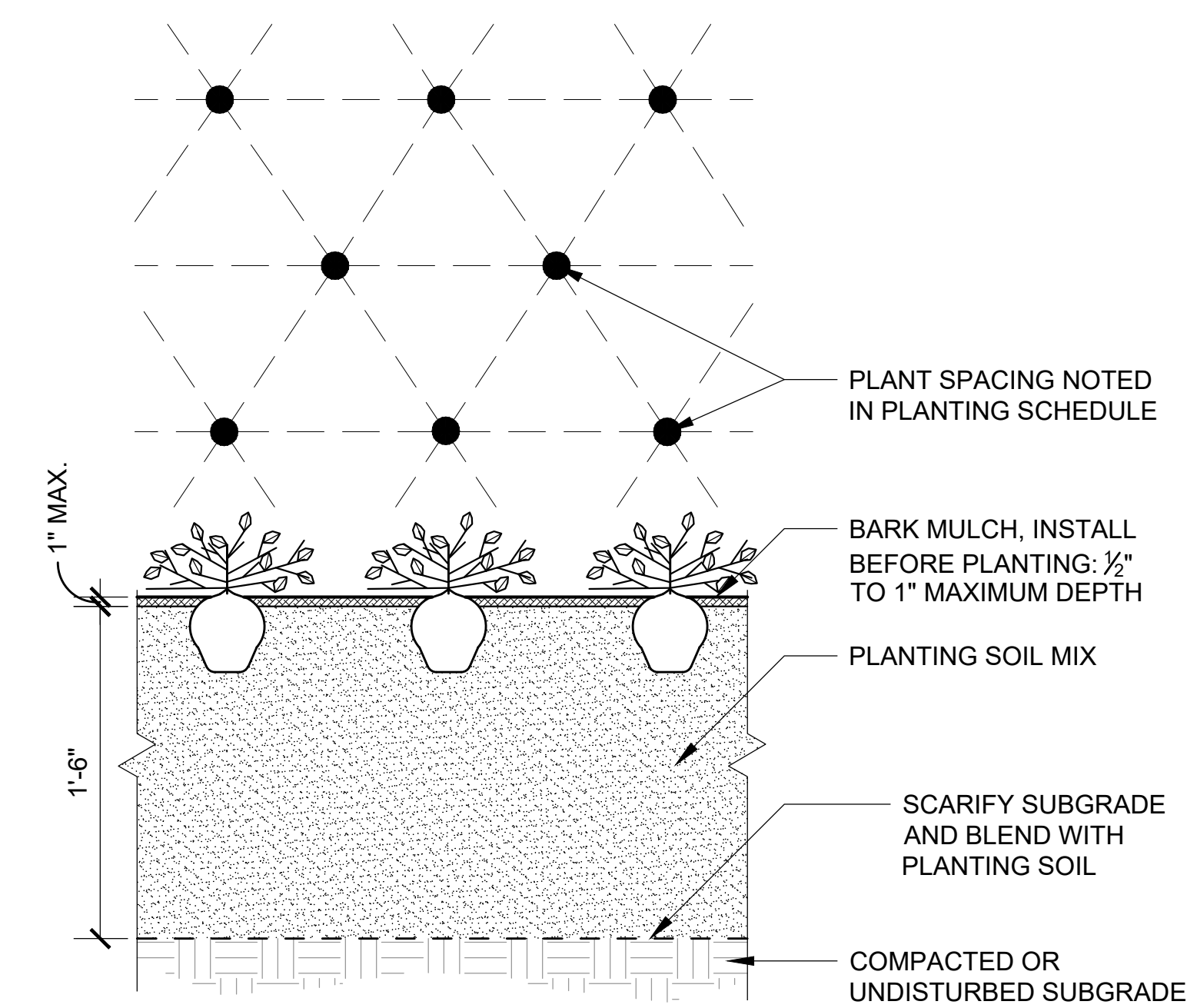
SNOW STORAGE CAPACITY: 8,000 FT³
2,000 SF at 4' of depth

PLANTING AND SOIL NOTES

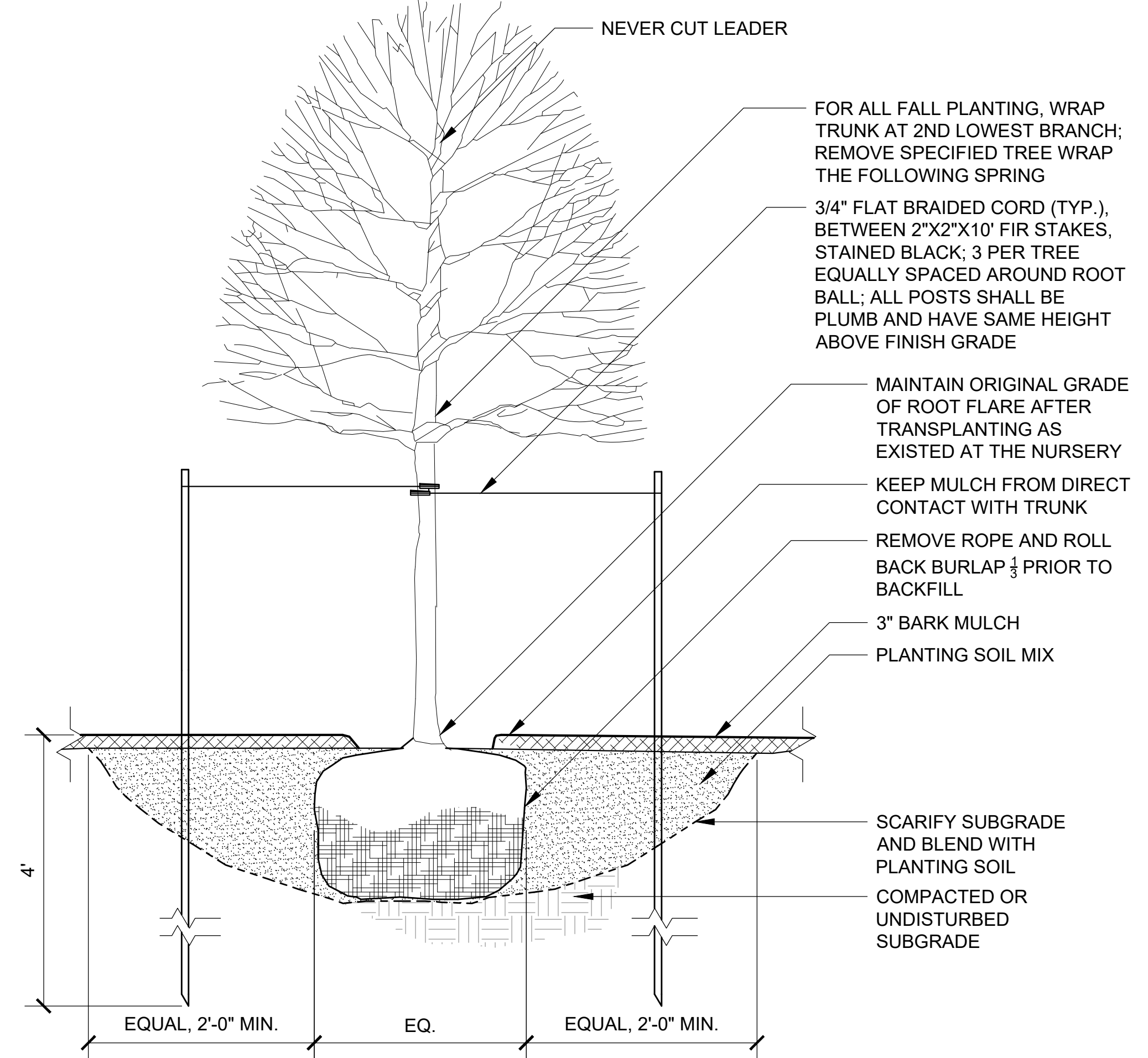
- IF DISCREPANCIES EXIST BETWEEN THE NUMBER OF PLANTS DRAWN ON THE PLANTING PLAN AND THE NUMBER OF PLANTS IN THE PLANT LIST, THE PLANTING PLAN SHALL GOVERN.
- ALL NEW PLANT MATERIAL SHALL CONFORM TO THE MINIMUM GUIDELINES ESTABLISHED FOR NURSERY STOCK PUBLISHED BY THE AMERICAN ASSOCIATION OF NURSERYMEN, INC. IN ADDITION, ALL NEW PLANT MATERIAL FOR THE PROJECT SHALL BE OF SPECIMEN QUALITY.
- THE LANDSCAPE ARCHITECT SHALL ONLY REVIEW TREES THAT ARE IN THE GROUND AT THE NURSERY. NO PRE-DUG TREES WILL BE ACCEPTED. THEREFORE TIMING OF IN-GROUND REVIEWS MUST BE COORDINATED WITH EXPECTED INSTALLATION DATES.
- ALL NEW PLANTS TO BE BALLED & BURLAPPED OR CONTAINER GROWN, UNLESS OTHERWISE NOTED ON THE PLANT LIST.
- THE CONTRACTOR SHALL SUPPLY ALL NEW PLANT MATERIAL IN QUANTITIES SUFFICIENT TO COMPLETE THE PLANTING SHOWN ON THE DRAWINGS.
- ANY PROPOSED SUBSTITUTIONS OF PLANT SPECIES SHALL BE MADE WITH PLANTS OF EQUIVALENT OVERALL FORM, HEIGHT, BRANCHING HABIT, FLOWER, LEAF, COLOR, FRUIT AND CULTURE, AND ONLY AFTER WRITTEN APPROVAL OF THE LANDSCAPE ARCHITECT.
- ALL NEW PLANTS SHALL BE TAGGED AND APPROVED BY THE LANDSCAPE ARCHITECT AT THE NURSERY PRIOR TO DIGGING OR DELIVERY TO THE SITE.
- CONTRACTOR SHALL LOCATE AND VERIFY ALL EXISTING UTILITY LINES PRIOR TO PLANTING AND SHALL REPORT ANY CONFLICTS TO THE LANDSCAPE ARCHITECT.
- STAKE LOCATION OF ALL PROPOSED PLANTING FOR APPROVAL BY LANDSCAPE ARCHITECT PRIOR TO THE COMMENCEMENT OF PLANTING.
- NEW SHRUBS AND GROUND COVER SHALL BEAR THE SAME RELATIONSHIP TO GRADE AS IT BORE TO PREVIOUS GRADE. TREES SHALL BE SET 3" HIGHER THAN PREVIOUS GRADE. NO TREES SHALL BE PLANTED BEFORE ACCEPTANCE OF ROUGH GRADING.
- ALL PLANT BEDS TO RECEIVE UN-DYED, AGED AND SHREDDED BARK MULCH AS PER SPECIFICATIONS.
- ALL EXISTING TREES TO REMAIN SHALL BE PROPERLY PROTECTED DURING CONSTRUCTION. PROTECTION TECHNIQUES SHALL BE REVIEWED AND APPROVED BY THE LANDSCAPE ARCHITECT.
- PRUNE TREES IN ACCORDANCE WITH THE SPECIFICATIONS.
- ALL PLANT MATERIAL SHALL BE MAINTAINED BY CONTRACTOR UNTIL FINAL ACCEPTANCE AND GUARANTEED FOR 1 CALENDAR YEAR.
- CONFIRM ALL QUANTITIES AGAINST PLANTING PLANS, GRADING PLANS, AND SPECIFICATIONS, INCLUDING SITE DISTURBANCE OUTSIDE OF THE LIMIT OF GRADING NECESSITATED TO FACILITATE CONSTRUCTION.
- WHERE SAND AND GRAVEL ARE SPECIFIED FOR A DRAINAGE LAYER, EXTEND DRAINAGE LAYER TO ASSOCIATED DRAIN LINES, DRAINAGE AREAS, OR DAYLIGHT.
- WHERE ONE SOIL TYPE MEETS ANOTHER SOIL TYPE, FORM A 1:1 SLOPED BOUNDARY TRANSITION.
- WHERE A SOIL PROFILE ENCLOSES WITHIN THE DRIP LINE OF EXISTING TREES, CONSULT WITH LANDSCAPE ARCHITECT PRIOR TO COMMENCING EXCAVATION.
- ALL EXCAVATION AND PLACEMENT OF SOILS WITHIN THE DRIP LINE OF EXISTING TREES TO BE PERFORMED BY HAND.
- SCARIFY SUBGRADE AS SPECIFIED BEFORE PLACEMENT OF ANY PLANTING SOILS.
- DO NOT PLACE OR HANDLE SOILS THAT ARE WET.
- PROTECT ALL EXISTING SOILS AGAINST COMPACTION, CONTAMINATION WITH CONSTRUCTION MATERIALS, AND ALL DISTURBANCE.
- CONTRACTOR IS RESPONSIBLE FOR ACTUAL SITE CONDITIONS, COORDINATION OF SOILS PLACEMENT, AND PLANTING SUBDRAINAGE.
- DO NOT PLACE ANY PLANTING SOIL PRIOR TO INSPECTION BY LANDSCAPE ARCHITECT.
- EXTENTS OF SAND BASED STRUCTURAL SOIL (SBSS) ARE APPROXIMATE. PROVIDE A MINIMUM OF 1,000 C.F. OF SBSS FOR EACH TREE.

PLANTING SCHEDULE

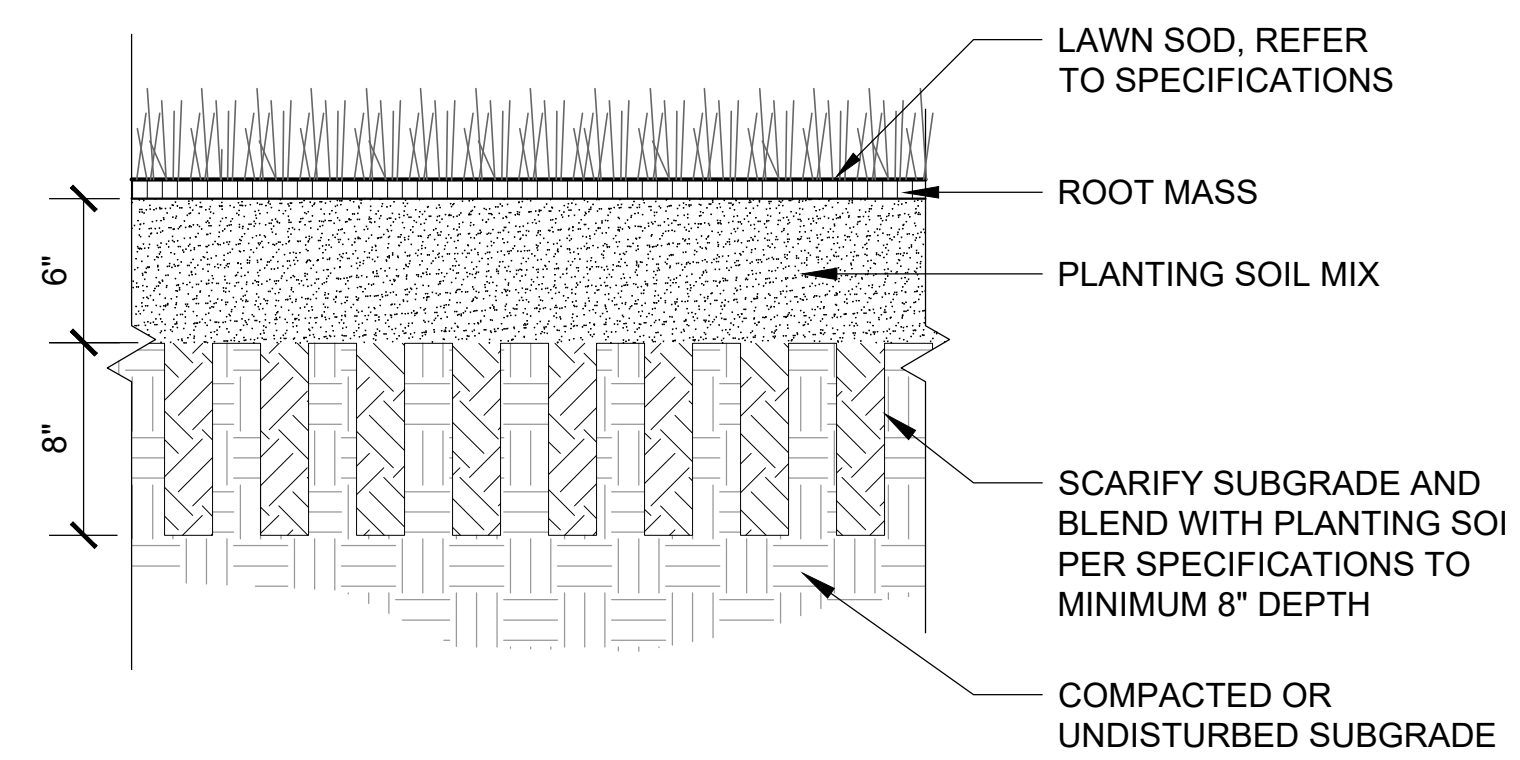
Symbol	Qty	Botanical Name	Common Name	Size	Comments
Deciduous Trees					
AC	14	Amelechier canadensis	Serviceberry	8'-10' ht.	B&B, Multi-stem
ARR	13	Acer rubrum 'Redpointe'	Redpointe Red Maple	3'-3.5' cal.	B&B, Matched
BNH	5	Betula nigra 'Heritage'	Heritage River Birch	12'-14' ht.	B&B, Multi-stem
CF	12	Cornus florida	Flowering Dogwood	3'-3.5' cal.	B&B, Multi-stem
LT	2	Liriodendron tulipifera	Tulip Tree	3'-3.5' cal.	B&B, Matched
L.S.M	5	Liquidambar styraciflua 'Moraine'	Moraine American Sweetgum	3'-3.5' cal.	B&B, Matched
QP	9	Quercus palustris	Pin Oak	3'-3.5' cal.	B&B, Matched
QBR	4	Quercus borealis rubra	Northern Red Oak	3'-3.5' cal.	B&B, Matched
UAJ	8	Ulmus americana 'Jefferson'	Jefferson Elm	3'-3.5' cal.	B&B, Matched
TOTAL	72				
Evergreen Trees					
TON	47	Thuja occidentalis 'Nigra'	Dark American Arborvitae	8'-10' ht.	B&B, Full to base
TSP	4	Thuja standishii 'Xplicata 'Green Giant'	Green Giant Arborvitae	12'-14' ht.	B&B, Full to base
TOTAL	51				
Shrubs					
AMM	28	Aronia melanocarpa 'Morton'	Iroquois Beauty Black Chokeberry	18"-24" ht.	#2 Cont.
CAS	82	Clethra alnifolia 'Sixteen Candles'	Sixteen Candles Summersweet	18"-24" ht.	#2 Cont.
CSF	114	Cornus sericea 'Farrow'	Arctic Fire Dogwood	18"-24" ht.	#2 Cont.
DL	11	Dierilla lonicera	Northern Bush Honeysuckle	18"-24" ht.	#2 Cont.
HGA	66	Hydrangea quercifolia 'Alice'	Alice Oakleaf Hydrangea	18"-24" ht.	#2 Cont.
IGS	99	Ilex glabra 'Shamrock'	Shamrock Inkberry	18"-24" ht.	#2 Cont.
IVS	30	Ilex verticillata 'Red Sprite'	Red Sprite Winterberry	24"-30" ht.	#2 Cont.
IVJ		Ilex verticillata 'Jim Dandy'	Jim Dandy Winterberry	24"-30" ht.	#2 Cont.
JHW	5	Juniperus horizontalis 'Wiltonii'	Wilton Creeping Juniper	12"-18" ht.	#1 Cont.
RAG	205	Rhus aromatica 'Gro Low'	Gro-Low Fragrant Sumac	12"-18" ht.	#2 Cont.
VD	26	Viburnum dentatum	Arowwood Viburnum	24"-30" ht.	#2 Cont.
TOTAL	666				
Perennials					
AT	25	Asclepias tuberosa	Butterfly Weed	18"-24" ht.	#1 Cont.
BA	61	Baptisia australis	False Blue Indigo	12"-18" ht.	#1 Cont.
CP	172	Carex pensylvanica	Pennsylvania Sedge	12"-18" ht.	#1 Cont.
DC	128	Deschampsia cespitosa	Tufted Hair Grass	12"-18" ht.	#1 Cont.
HSD	191	Hemerocallis 'Stella D'Oro'	Stella D'Oro Daylily	12"-15" ht.	#1 Cont.
MP	7	Monarda punctata	Spotted Bee Balm	18"-24" ht.	#1 Cont.
NFV	83	Nepeta X faassenii 'Walker's Low'	Walker's Low Catmint	12"-18" ht.	#1 Cont.
PVS	194	Panicum virgatum 'Shenandoah'	Switchgrass	18"-24" ht.	#1 Cont.
DP	66	Dennstaedtia punctilobula	Hay-scented Fern	18"-24" ht.	#1 Cont.
RFG	212	Rudbeckia fulgida 'Goldsturm'	Goldsturm Black Eyed Susan	18"-24" ht.	#1 Cont.
SNB	89	Symphoricarum novi-belgii 'Wood's Light Blue'	Light Blue New York Aster	12"-18" ht.	#1 Cont.
SSB	153	Schizachyrium scoparium 'The Blues'	The Blues Little Bluestem	18"-24" ht.	#1 Cont.
VA	94	Vaccinium angustifolium	Lowbush Blueberry	12"-15" ht.	#1 Cont.
TOTAL	1465				
VINES					
PQ	3	Parthenocissus quinquefolia	Virginia Creeper	5' stake	#5 Cont.
CR	3	Campsis radicans	Trumpet Creeper	5' stake	#5 Cont.
CV	3	Clematis virginiana	Old Man's Beard	5' stake	#5 Cont.
HAP	3	Hydrangea anomala petiolaris	Climbing Hydrangea	5' stake	#5 Cont.
TOTAL	12				
TOTAL	2260				



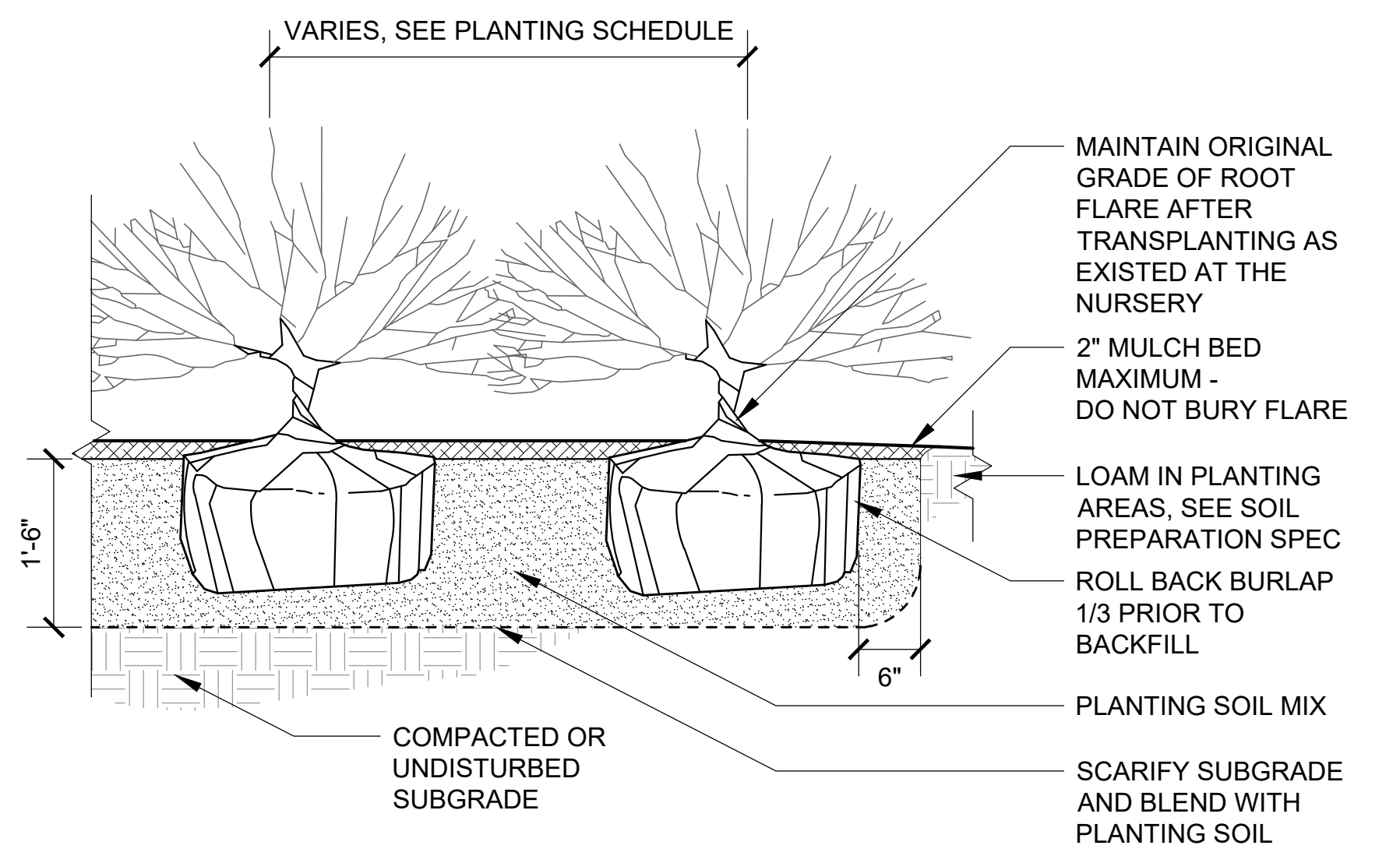
1 GROUND COVER
1 1/2" = 1'-0"



2 TREE PLANTING
3/4" = 1'-0"



3 SOD
1 1/2" = 1'-0"



4 SHRUB PLANTING
3/4" = 1'-0"

501 POND STREET

ASHLAND, MA



ARCHITECT



101 SUMMER ST BOSTON MA 02110

CONSULTANT



STAMP

KEY PLAN

MARK	DATE	DESCRIPTION
	06/23/2022	PROJECT NUMBER: 2217.000
		DRAWN BY: IR, FS, AD
		CHECKED BY: IR

SHEET TITLE

Landscape Planting List and Details

L-201

6/23/2022 9:16:04 AM - T:\217 501 POND STREET W TRASK & ICON\CONSTRUCTION DRAWINGS\CURRENT CWDG DRAWINGS\REFS\XV-PLANTING.DWG - FERNANDO SOUSA

501 POND STREET

ASHLAND, MA



ARCHITECT



101 SUMMER ST BOSTON MA 02110

CONSULTANT

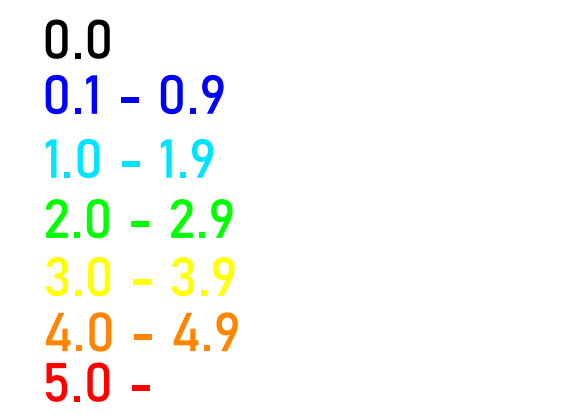


Landscape Wolff Design Group
Landscape Architects & Planners
www.copley-wolff.com

STAMP

KEY PLAN

FOOTCANDLE LEGEND



SCALE: 1" = 20'-0"



MARK DATE DESCRIPTION

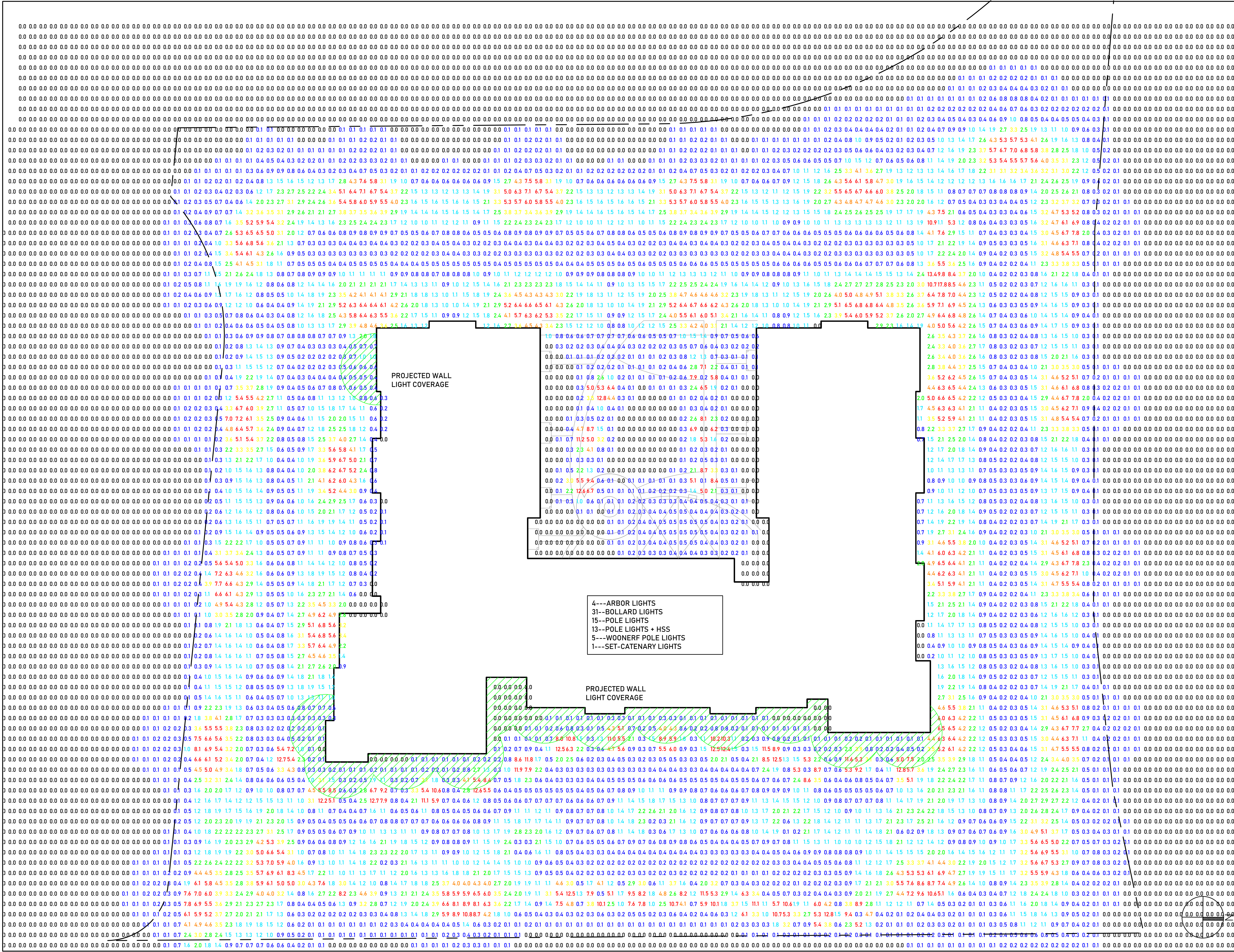
MARK	DATE	DESCRIPTION
	06/23/2022	
		PROJECT NUMBER: 2217.000
		DRAWN BY: IR, FS, AD
		CHECKED BY: IR

SHEET TITLE

Landscape
Photometrics

L-300

6/23/2022 9:16:46 AM - T1217 501 POND STREET W TRASK & ICON CONSTRUCTION DRAWINGS\CURRENT\CWDG DRAWINGS\REFSVR_LINEWORK.DWG - FERNANDO SOUSA



PROJECTED WALL LIGHT COVERAGE

- 4---ARBOR LIGHTS
- 31---BOLLARD LIGHTS
- 15---POLE LIGHTS
- 13---POLE LIGHTS + HSS
- 5---WOONERF POLE LIGHTS
- 1---SET-CATENARY LIGHTS

PROJECTED WALL LIGHT COVERAGE