



Peter Matchak <pmatchak@ashlandmass.com>

Union Street elevation

1 message

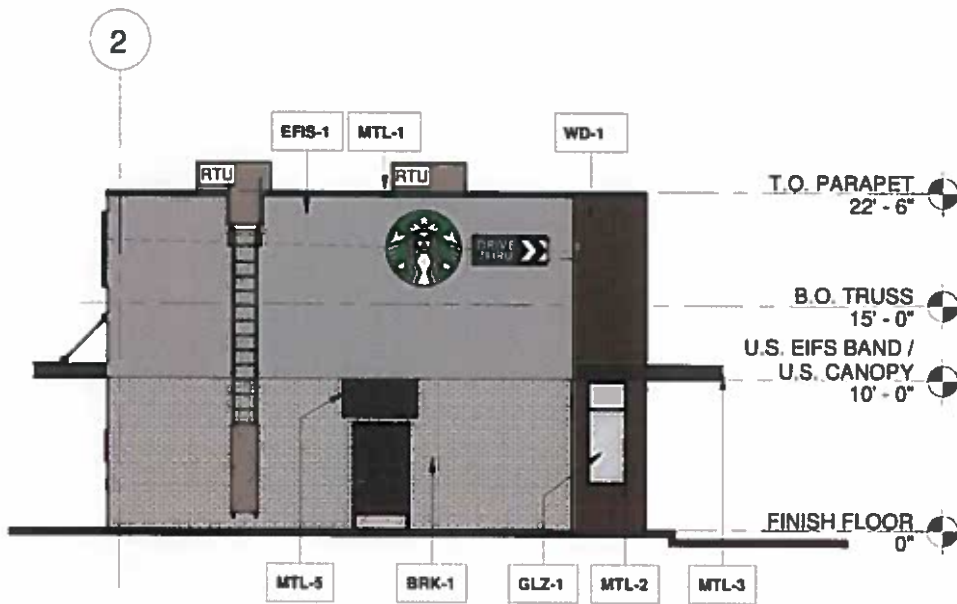
Greg Salvatore <gsalvatore@salvatorecapital.com>
To: Peter Matchak <pmatchak@ashlandmass.com>

Tue, Jan 17, 2023 at 2:43 PM

Pete,

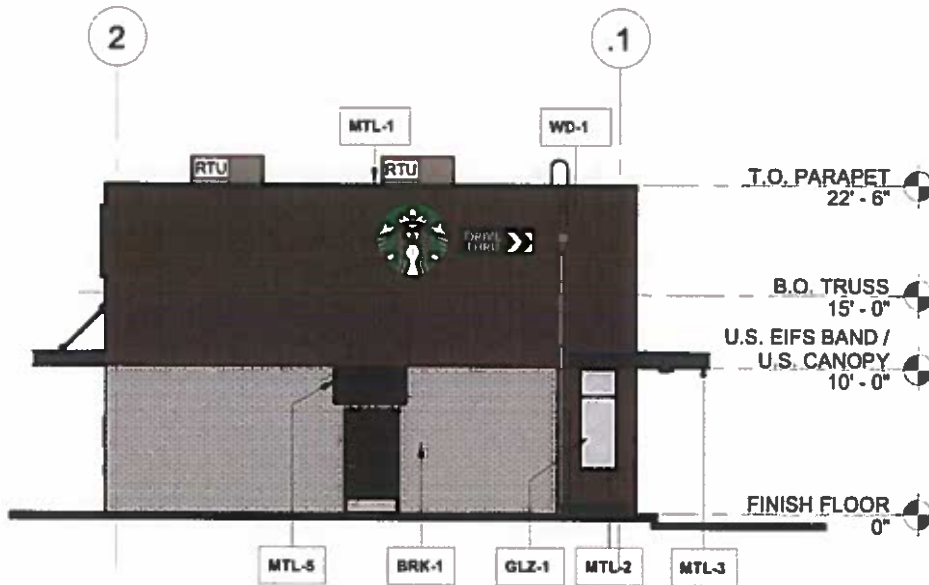
This is the elevation we spoke about this morning. I have asked the architect to create a bit more of a perspective (not a rendering) to give folks a better idea of how it would look from Union street.

ORIGINAL SUBMITTED EAST ELEVATION



4 EAST ELEVATION Scale 1/8" = 1'-0"

REVISED EAST ELEVATION



4 EAST ELEVATION

Scale 1/8" = 1'-0"

Call me when you get this so we can discuss it before you send it anywhere.

Thanks.

—
 Gregory J. Salvatore
 SALVATORE CAPITAL PARTNERS
 858 Washington Street, Suite 309
 Dedham, MA 02026
 781.329.3000 x202 (office)
 781.910.5618 (mobile)
www.salvatorecapital.com
gsalvatore@salvatorecapital.com

The information contained in this communication is confidential, may be privileged and is intended for the exclusive use of the above named addressee(s). If you are not the intended recipient(s), you are expressly prohibited from copying, distributing, disseminating, or in any other way using any information contained within this communication. If you have received this communication in error please contact the sender by telephone or by response via mail.

We have taken precautions to minimize the risk of transmitting software viruses, but we advise you to carry out your own virus checks on any attachment to this message. We cannot accept liability for any loss or damage caused by software viruses.

Emails sent or received shall neither constitute acceptance of conducting transactions via electronic means nor shall create a binding contract in the absence of a fully signed written contract.

 SBUX ELEVATIONSpdf.pdf
 178K