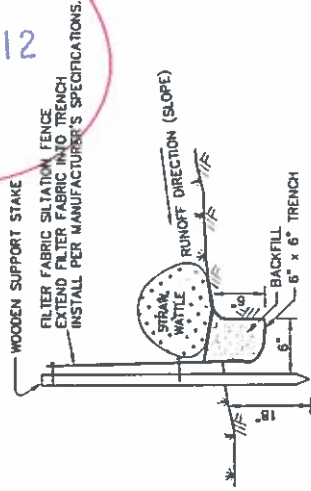
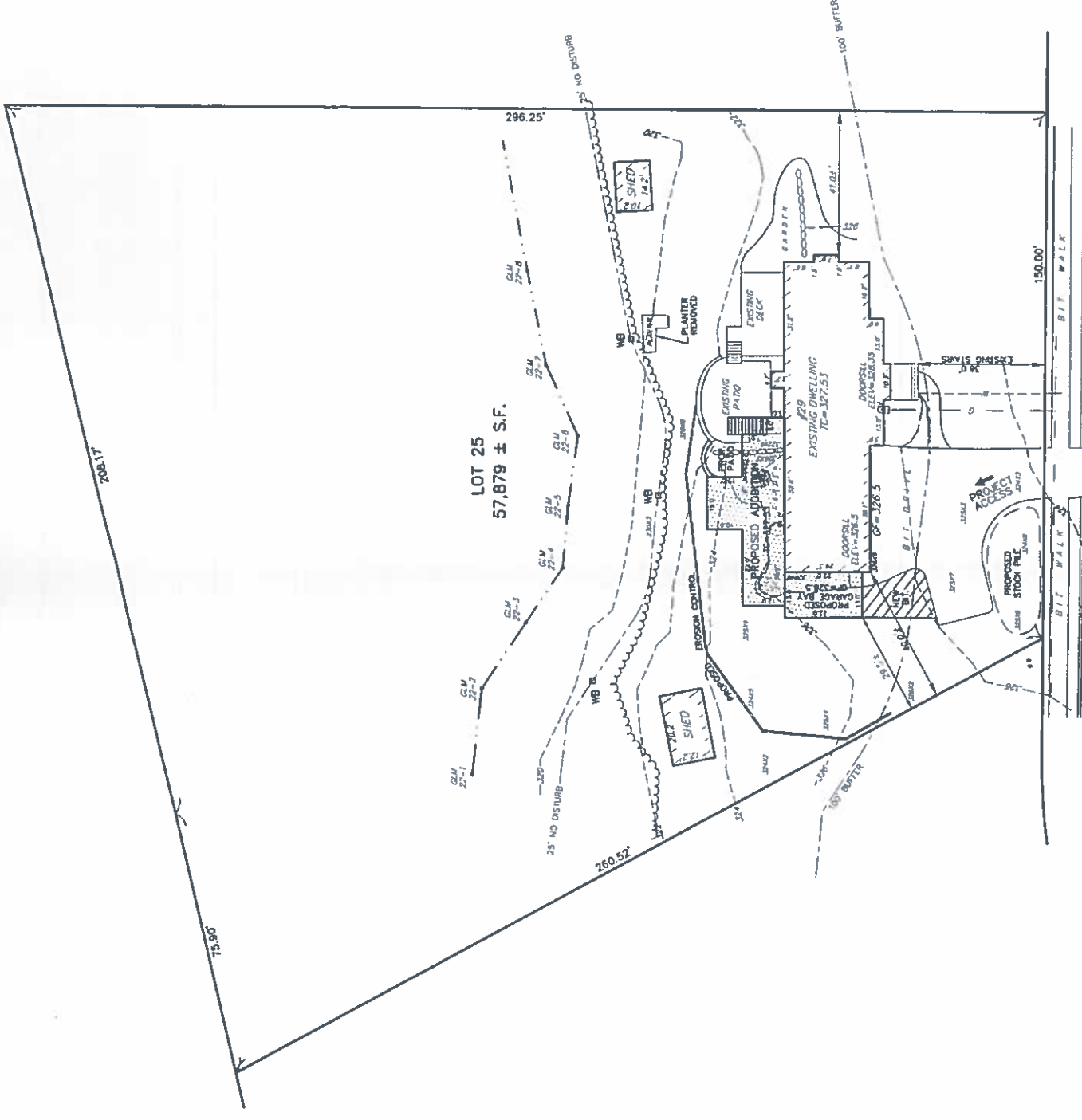
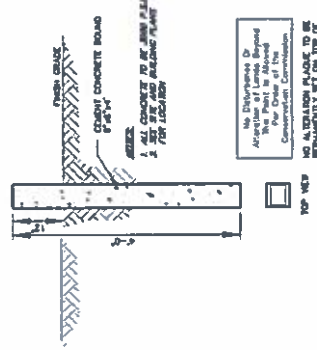


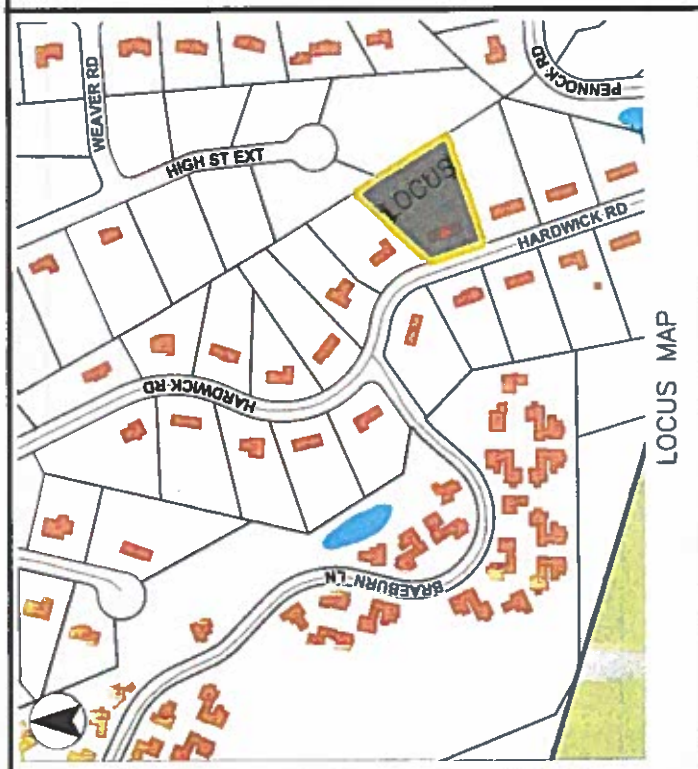
RECEIVED  
TOWN CLERK  
ASHLAND, MA  
23 AUG 18 AM 9:12



(EROSION CONTROL BARRIER)  
SILT FENCE/STRAW WATTLES  
N.T.S.



HARDWICK ROAD



LEGEND

- UPD. [Symbol] UTILITY POLE
- [Symbol] WATER GATE
- [Symbol] GAS GATE
- [Symbol] HYDRANT
- [Symbol] DRAIN MANHOLE
- [Symbol] CATCH BASIN
- [Symbol] SEWER MANHOLE
- [Symbol] MONITOR WELL
- [Symbol] ELECTRIC JUNCTION BOX
- [Symbol] LIGHT SIGN
- [Symbol] OVERHEAD WIRE
- [Symbol] SPOT ELEVATION
- [Symbol] BITUMINOUS CONCRETE
- [Symbol] BIT
- [Symbol] CHAIN LINK FENCE
- [Symbol] UNDERGROUND ELECTRIC
- [Symbol] EXISTING CONTOUR
- [Symbol] CCB (CAPE COD BERM)
- [Symbol] VCC (VERTICAL CONCRETE CURB)
- [Symbol] DRAIN LINE
- [Symbol] WATER LINE
- [Symbol] GAS LINE
- [Symbol] SEWER LINE
- [Symbol] WB PROPOSED WETLAND BOUND WITH PLAQUE

ASSESSOR'S REFERENCE:  
19-037-00-000

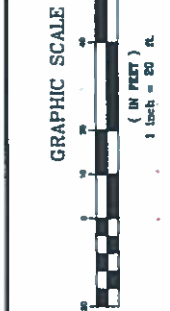
DEED REFERENCE:  
MIDDLESEX COUNTY REGISTRY OF DEEDS  
CERT 273802

PLAN REFERENCE:  
LC PLAN 28577

OWNER OF RECORD:  
MICHAEL SEJUNGWON RAH

ZONING CLASSIFICATION:  
RA  
MIN. LOT SIZE = 30,000 SF.  
MIN. FRONTAGE = 150'  
MIN. SETBACK REQUIREMENTS:  
FRONT SET BACKS = 40'  
SIDE SETBACKS = 10'  
REAR SETBACKS = 30'

NOTE: IT SHALL BE THE RESPONSIBILITY OF THE CONTRACTOR TO VERIFY THE LOCATION AND DEPTH OF EXISTING UTILITIES PRIOR TO COMMENCEMENT OF ANY CONSTRUCTION. DISINTEGRATE IS TO BE NOTIFIED 72 WORKING HOURS IN ADVANCE OF CONSTRUCTION. DIGSAFE 1-888-344-7233



REVISIONS		
No.	DATE	DESCRIPTION
1	1/13/2023	REVISE ADDITION
2	1/29/2023	REVISE ADDITION
3	2/2/2023	REVISE ADDITION



GLM Engineering Consultants, Inc.  
19 EXCHANGE STREET  
HOLLISTON, MA 01746  
P: 508-429-1100 F: 508-429-7160  
www.GLMengineering.com

PROPOSED ADDITION PLAN  
29 HARDWICK ROAD  
ASHLAND, MASSACHUSETTS  
PREPARED FOR:  
COMOLLI CONSTRUCTION  
110 ELM STREET, SUITE 9  
MILLBURY, MA 01527

JOB No. 17326  
DATE: 7/28/2023  
SCALE: 1"=20'  
SHEET: 1 of 1  
PLAN #: 27.623