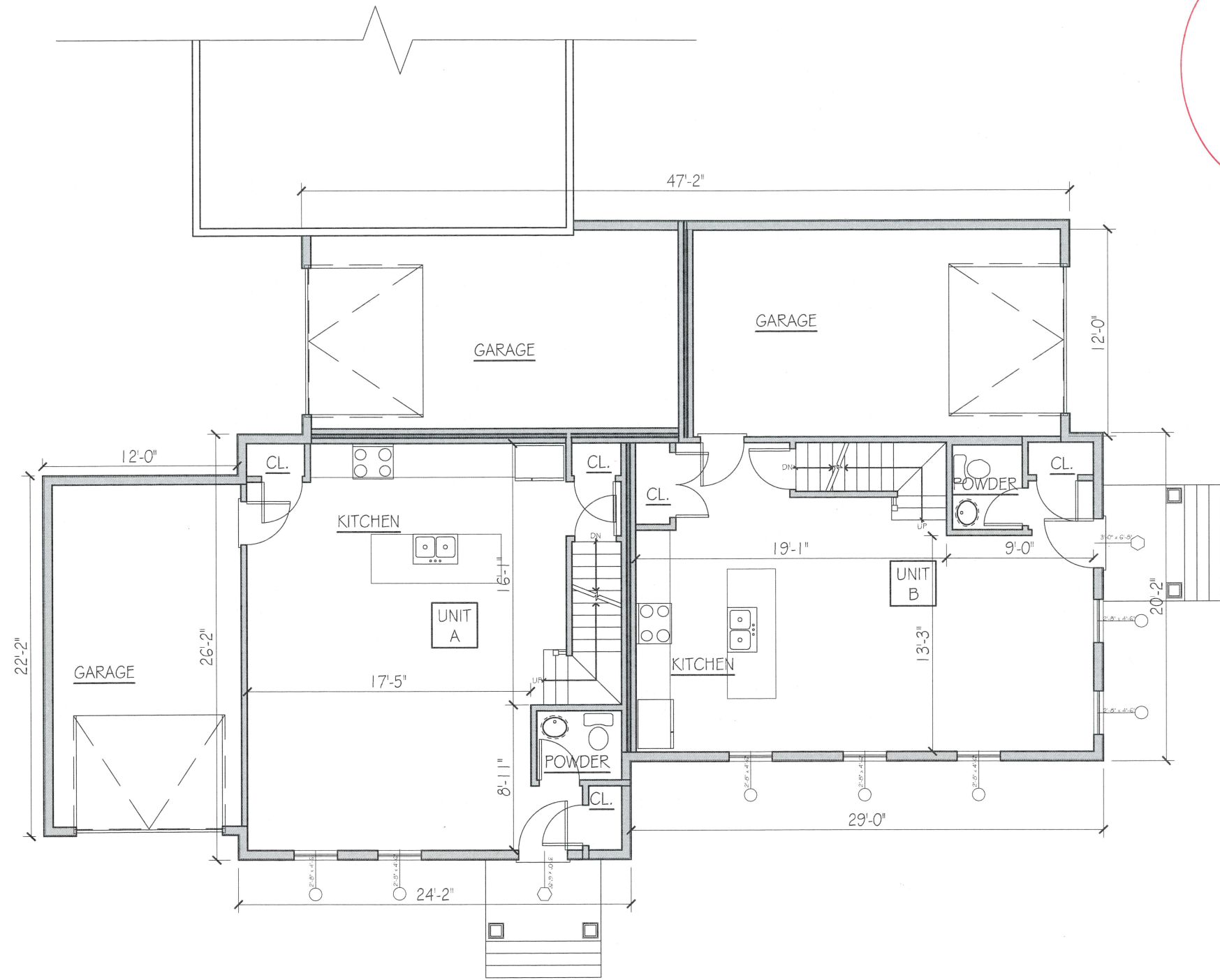


RECEIVED
TOWN CLERK
ASHLAND, MA
2025 MAR 27 PM 2:03
CS



FIRST FLOOR PLAN
1/8" = 1'-0"

L.R. Designs
DESIGNER ARCHITECTS DEVELOPER INC./SOP
64 ALLISON STREET
SUITE 200
ASHLAND, MA 01921
1.978.258.7117
LRDESIGNINC.COM

Project Title:
**169 PLEASANT ST.
ASHLAND MA.**

Drawing Title:
**SCHEMATIC DESIGN:
FLOOR PLANS**

Revisions:

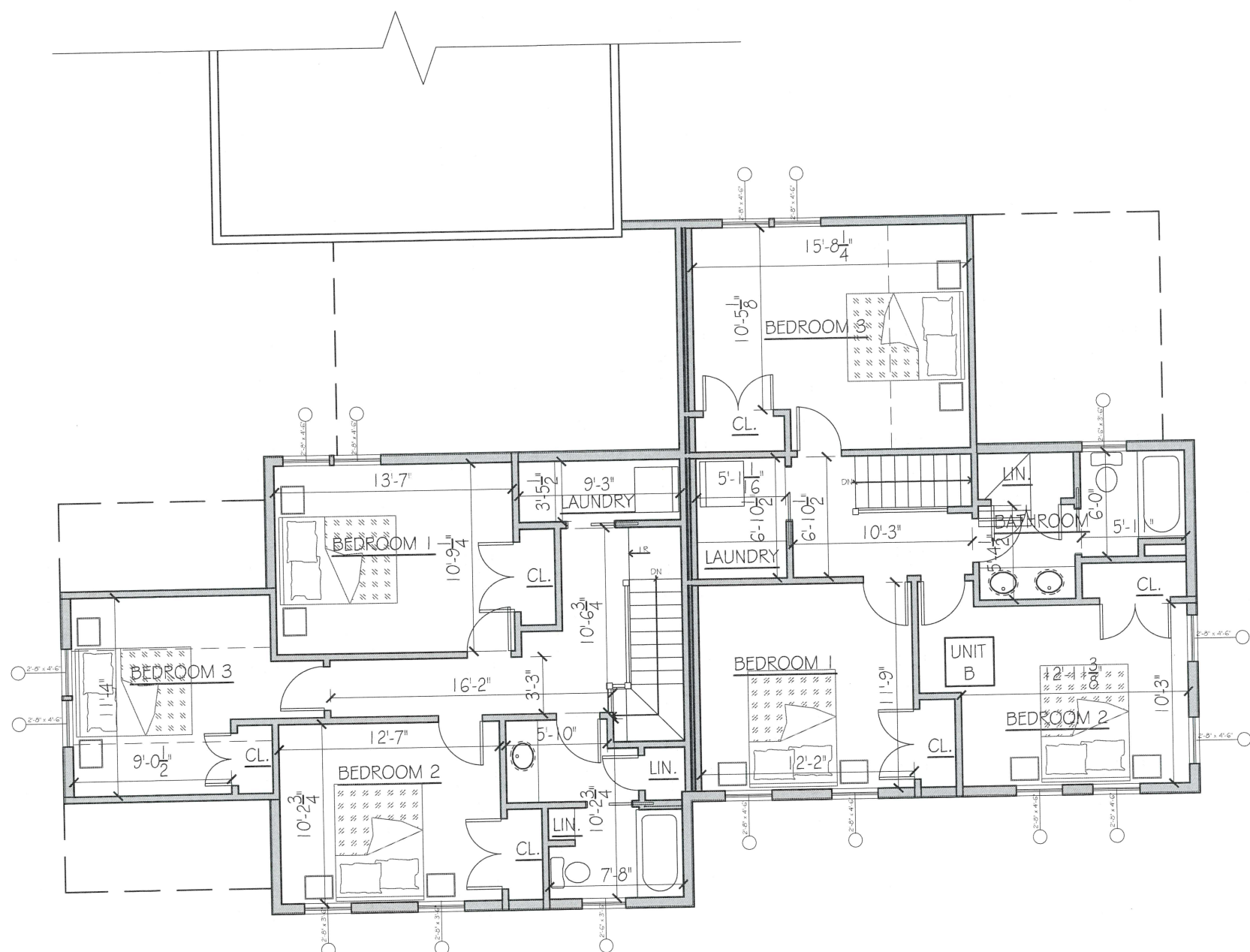
#	Description	date

Project # 23021

Scale: 1/8" = 1'-0"

Date: 08MAY2023

Drawing # SD1.1



SECOND FLOOR PLAN
1/8" = 1'-0"

Project Title:
**169 PLEASANT ST.
 ASHLAND MA.**

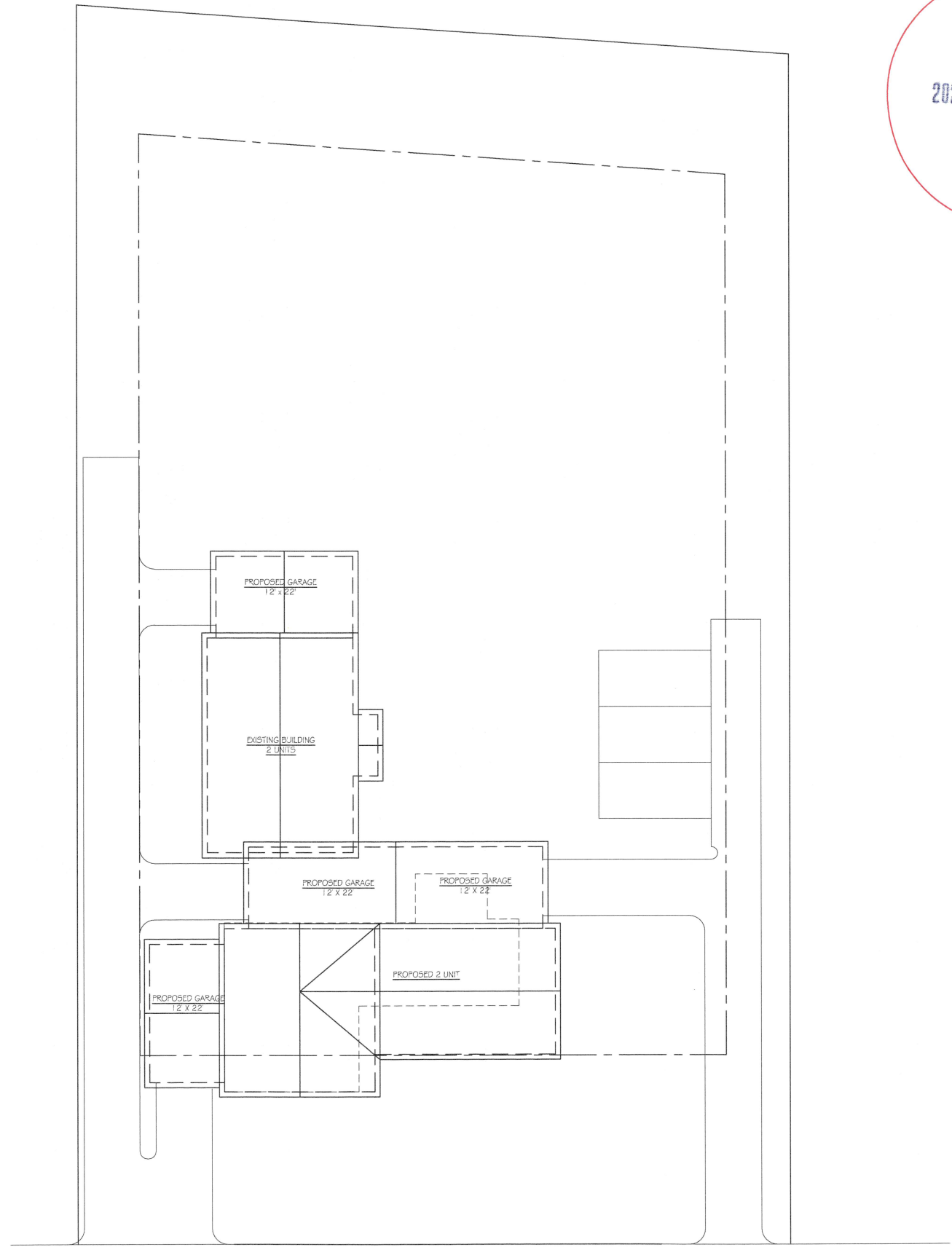
Drawing Title:
**SCHEMATIC DESIGN:
 FLOOR PLANS**

Revisions:

#	Description	date

Project # 23021
 Scale: 1/8" = 1'-0"
 Date: 08MAY2023
 Drawing # SD1.2

RECEIVED
TOWN CLERK
ASHLAND, MA
2025 MAR 27 PM 2:03
CS



PROPOSED FOOTPRINT
1" = 10'

LR Designs
DESIGNS ARCHITECTS PLANNERS DEVELOPMENT SERVICES
66 WALTON STREET, SUITE 5
CAMBRIDGE, MA 02142
617.665.2103
LRDESIGNS.COM

Project Title:
**169 PLEASANT STREET
ASHLAND MA**

Drawing Title:
**SCHEMATIC:
SITE PLAN**

Project #
23021

Drawn By: HA	Reviewed By: PGL
-----------------	---------------------

Scale: AS NOTED	Date: 08MAY2023
--------------------	--------------------

Drawing #:
SITE

A
B
C
D

1 2 3 4 5