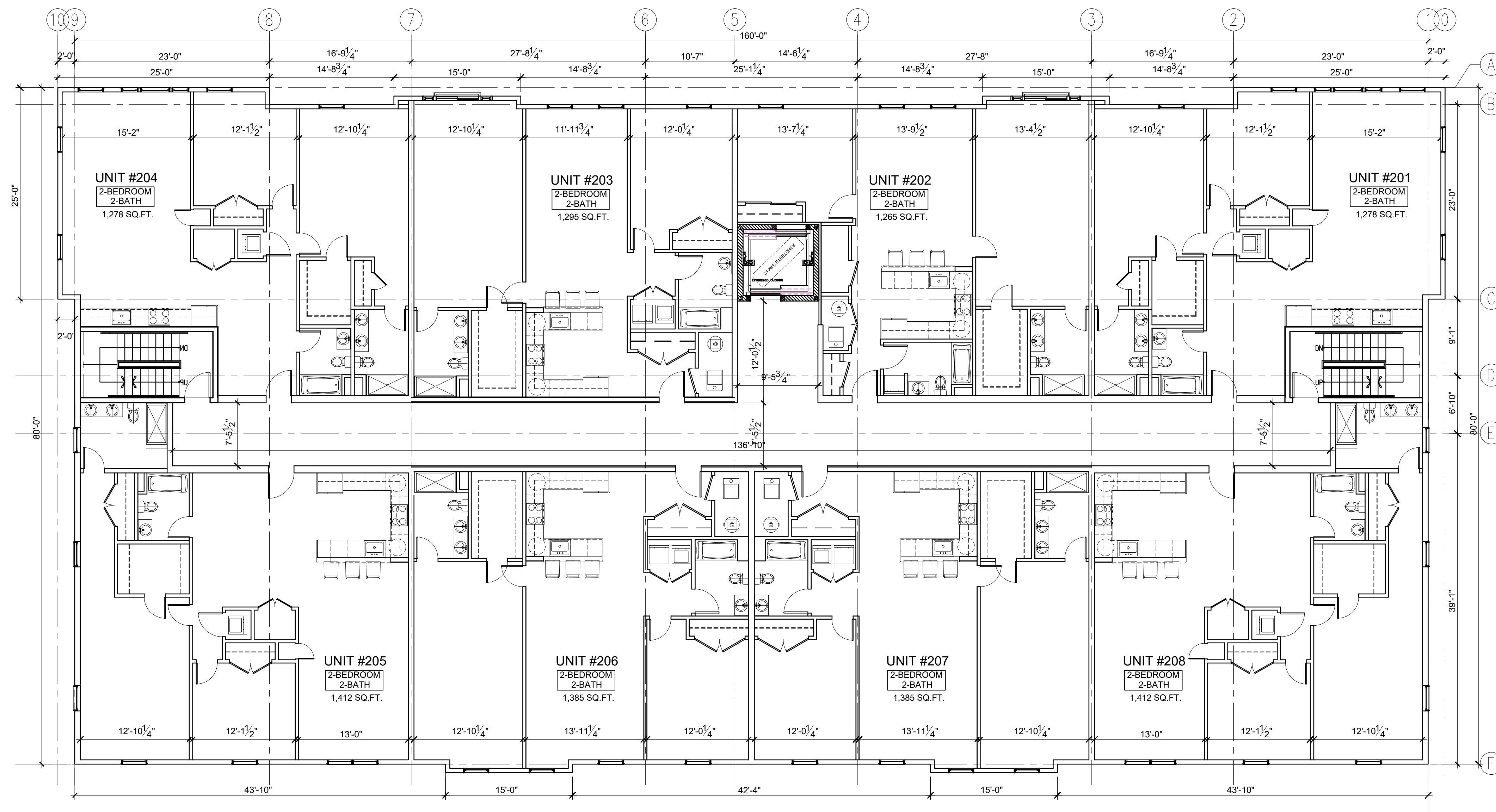


Revisions	
3	DWG. REVISIONS 11/30/19
2	DWG. REVISIONS 10/19/19
1	DWG. REVISIONS 05/27/19



MIXED-USE BUILDING
COMMERCIAL + RESIDENTIAL

12 POND STREET
ASHLAND, MA 01721

Stamped By: **JIM CHEN, AIA**

Drawn By: J.C.
Checked By: _____
Date: 03/09/2019

Project No. JCA #1918
File Name: A-1.dwg
Drawing Title: _____

Revisions	
3	DWG. REVISIONS 11/30/19
2	DWG. REVISIONS 10/19/19
1	DWG. REVISIONS 05/27/19

PROPOSED SECOND FLOOR PLAN

Sheet No. **A-2**
Scale: **3/32" = 1'-0"**



PROPOSED FRONT ELEVATION (POND STREET)



PROPOSED REAR ELEVATION (REAR PARKING LOT)



PROPOSED LEFT ELEVATION (DOUGLAS ROAD)



PROPOSED RIGHT ELEVATION (GREENHALGE ROAD)



Revisions		
3	DWG. REVISIONS	11/30/19
2	DWG. REVISIONS	10/19/19
1	DWG. REVISIONS	05/27/19




 730 HANCOCK STREET
 QUINCY, MA 02170
 TEL: (617) 642-2882
 EMAIL: JIM.CHEN5408@GMAIL.COM

MIXED-USE BUILDING
 COMMERCIAL + RESIDENTIAL
 12 POND STREET
 ASHLAND, MA 01721

Stamped By: **JIM CHEN, AIA**

Drawn By: J.C.
 Checked By: _____
 Date: 03/09/2019
 Project No. JCA #1918
 File Name: R-1.dwg
 Drawing Title: _____

Revisions		
3	DWG. REVISIONS	11/30/19
2	DWG. REVISIONS	10/19/19
1	DWG. REVISIONS	05/27/19

PERSPECTIVE
 RENDERING VIEW
 FROM POND STREET
 Sheet No. **R-2**
 Scale: **N.T.S.**




 730 HANCOCK STREET
 QUINCY, MA 02170
 TEL: (617) 642-2882
 EMAIL: JIM.CHEN5408@GMAIL.COM

MIXED-USE BUILDING
 COMMERCIAL + RESIDENTIAL
 12 POND STREET
 ASHLAND, MA 01721

Stamped By: **JIM CHEN, AIA**

Drawn By: J.C.
 Checked By: _____
 Date: 03/09/2019
 Project No. JCA #1918
 File Name: R-1.dwg
 Drawing Title: _____

Revisions		
3	DWG. REVISIONS	11/30/19
2	DWG. REVISIONS	10/19/19
1	DWG. REVISIONS	05/27/19

PERSPECTIVE
 RENDERING VIEW
 FROM POND STREET

Sheet No. **R-3**
 Scale: N.T.S.

