

East Elevation Rear

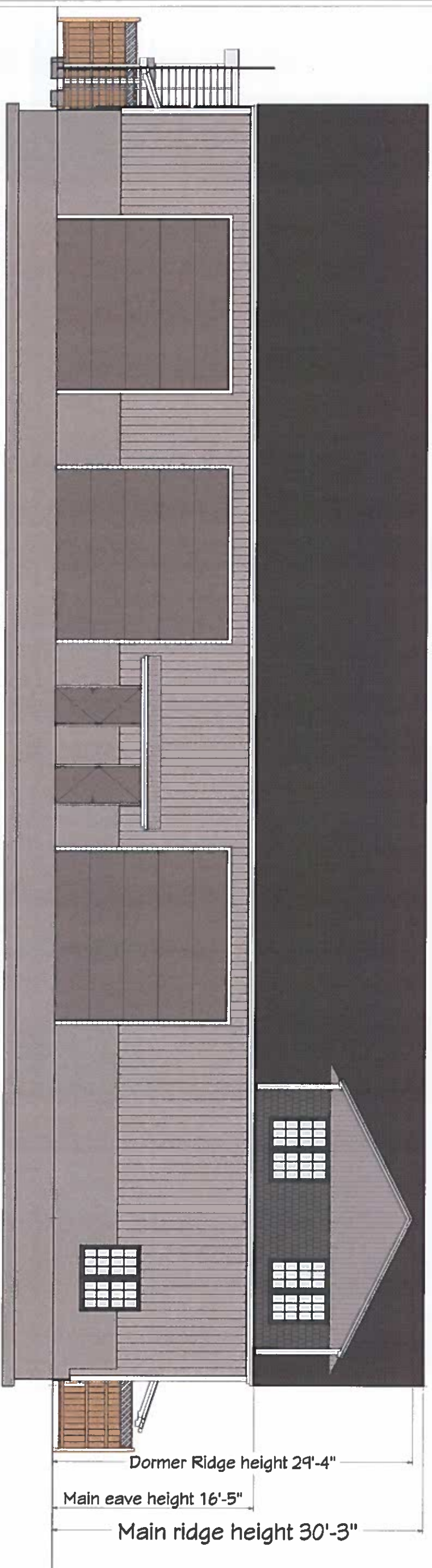
Previous siding was metal
Now vinyl

Previous design had metal roof
Now asphalt

Previous Height
44'-1"
Lowered almost 14'

RECEIVED
TOWN CLERK
ASHLAND, MA
2019 DEC 19 PM 1:05

REVISION TABLE			
NUMBER	DATE	REVISED BY	DESCRIPTION



West Elevation Front

Previous height 44'-1"

Dormer Ridge height 29'-4"
Main eave height 16'-5"
Main ridge height 30'-3"

SHEET:

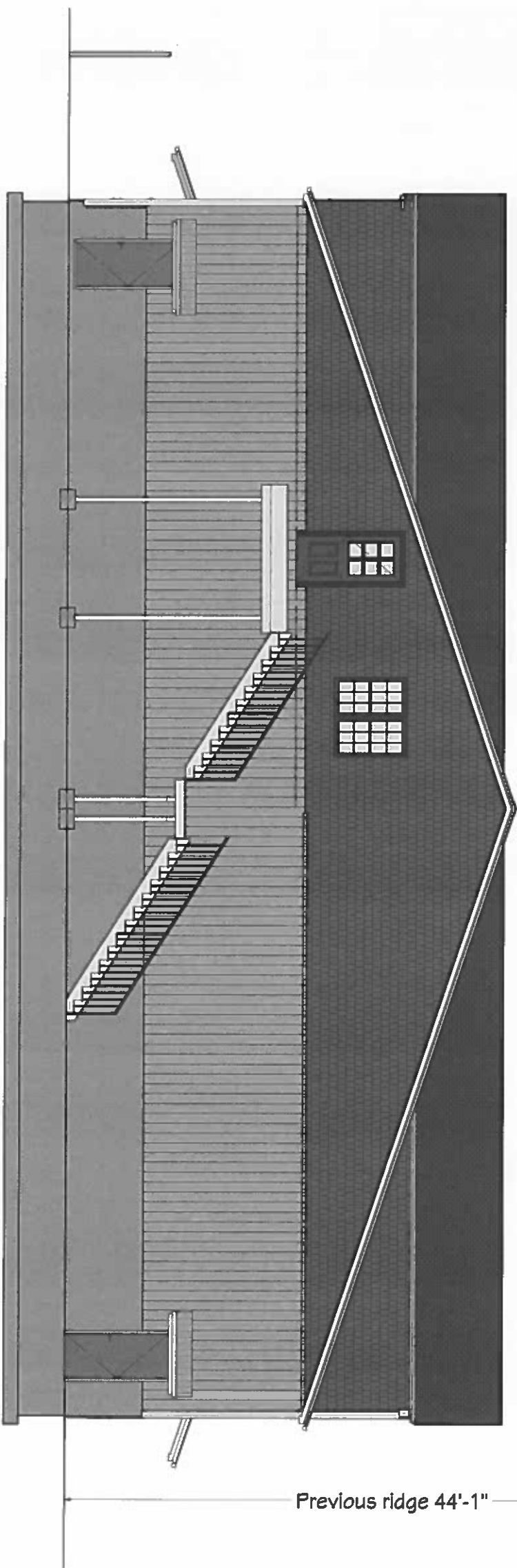
SCALE: 3/16" = 1'-0"
DATE: 12/17/2019

DRAWINGS PROVIDED BY:
Rodenhiser Builders

East and West Elevations

Building #2

Previous design:
 Roof Metal and 3/12
 Siding metal
 Current design:
 Roof asphalt and 4/12
 Siding Vinyl Board and batten,
 Vinyl cedar impressions in gables



North Elevation Left

Previous design height was 44'-1"
 now it is 30'-3"

REVISION TABLE			
NUMBER	DATE	REVISED BY	DESCRIPTION

DRAWINGS PROVIDED BY:
Rodenhiser Builders

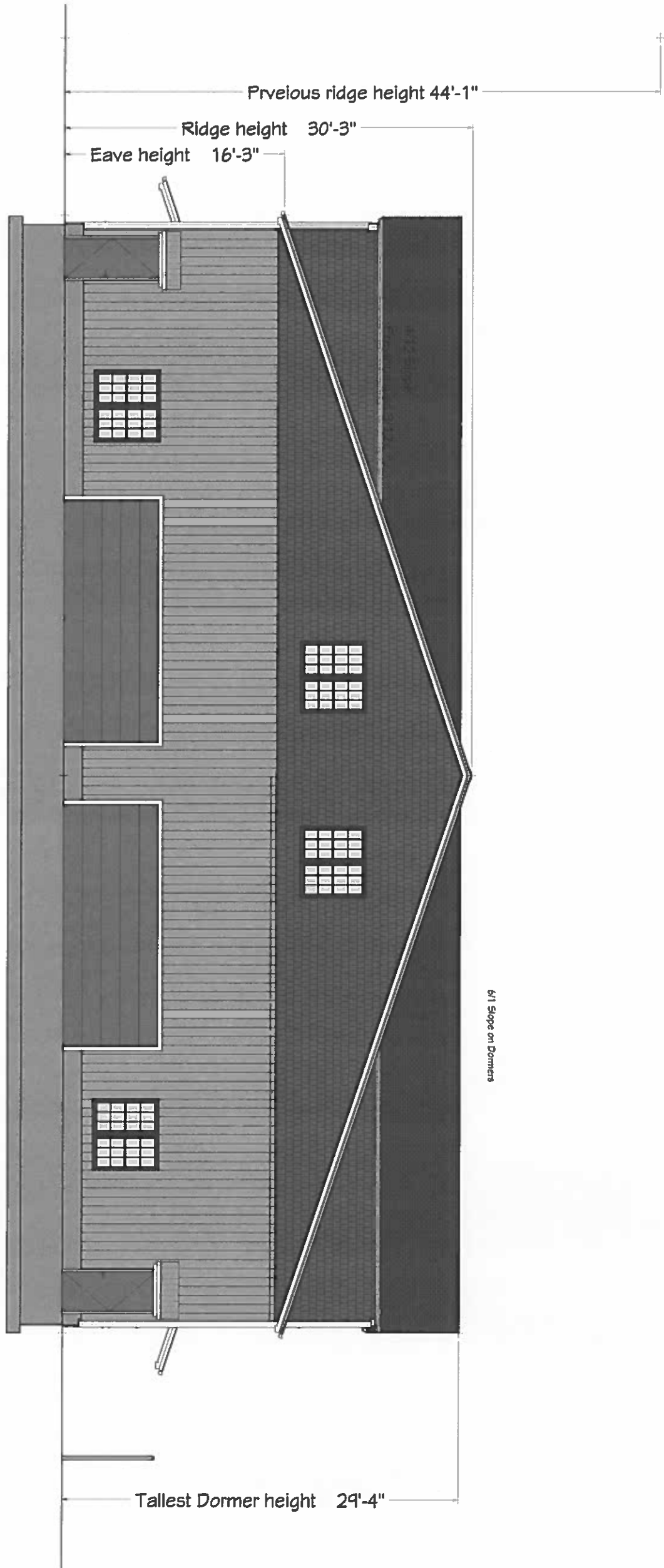
DATE:
 12/17/2019

SCALE:
 3/16" = 1'-0"

SHEET:

North Elevation

Building #2



South Elevation

6/1 Slope on Dormers

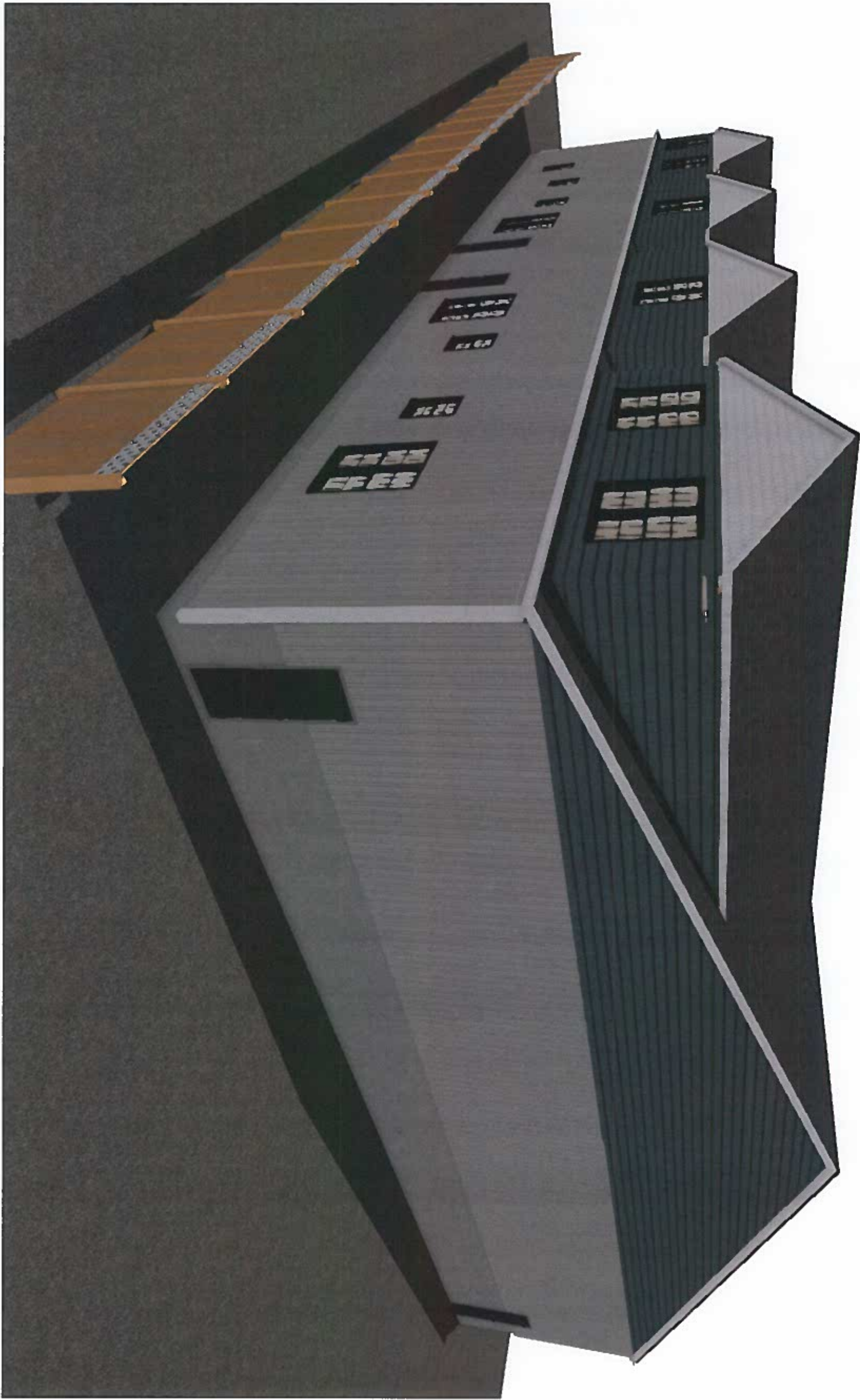
DATE: 12/17/2019
 SCALE: 3/16" = 1'-0"
 SHEET:

DRAWINGS PROVIDED BY:
Rodenhiser Builders

South Elevation

Building #2

REVISION TABLE			
NUMBER	DATE	REVISED BY	DESCRIPTION



SHEET: _____

SCALE: 3/16" = 1'-0"

DATE: 12/17/2019

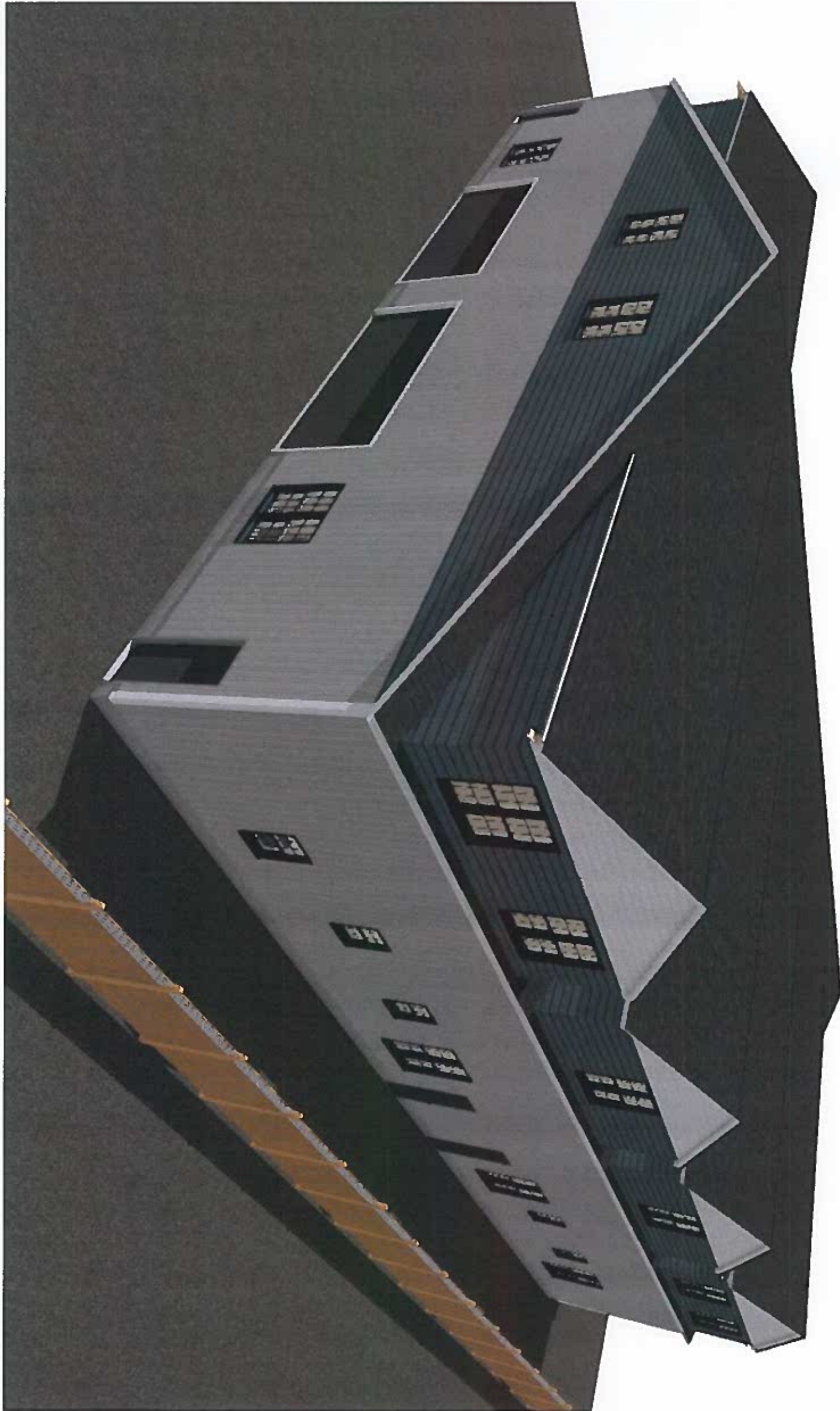
DRAWINGS PROVIDED BY:

Rodenhiser Builders

3d images

Building #2

REVISION TABLE			
NUMBER	DATE	REVISED BY	DESCRIPTION



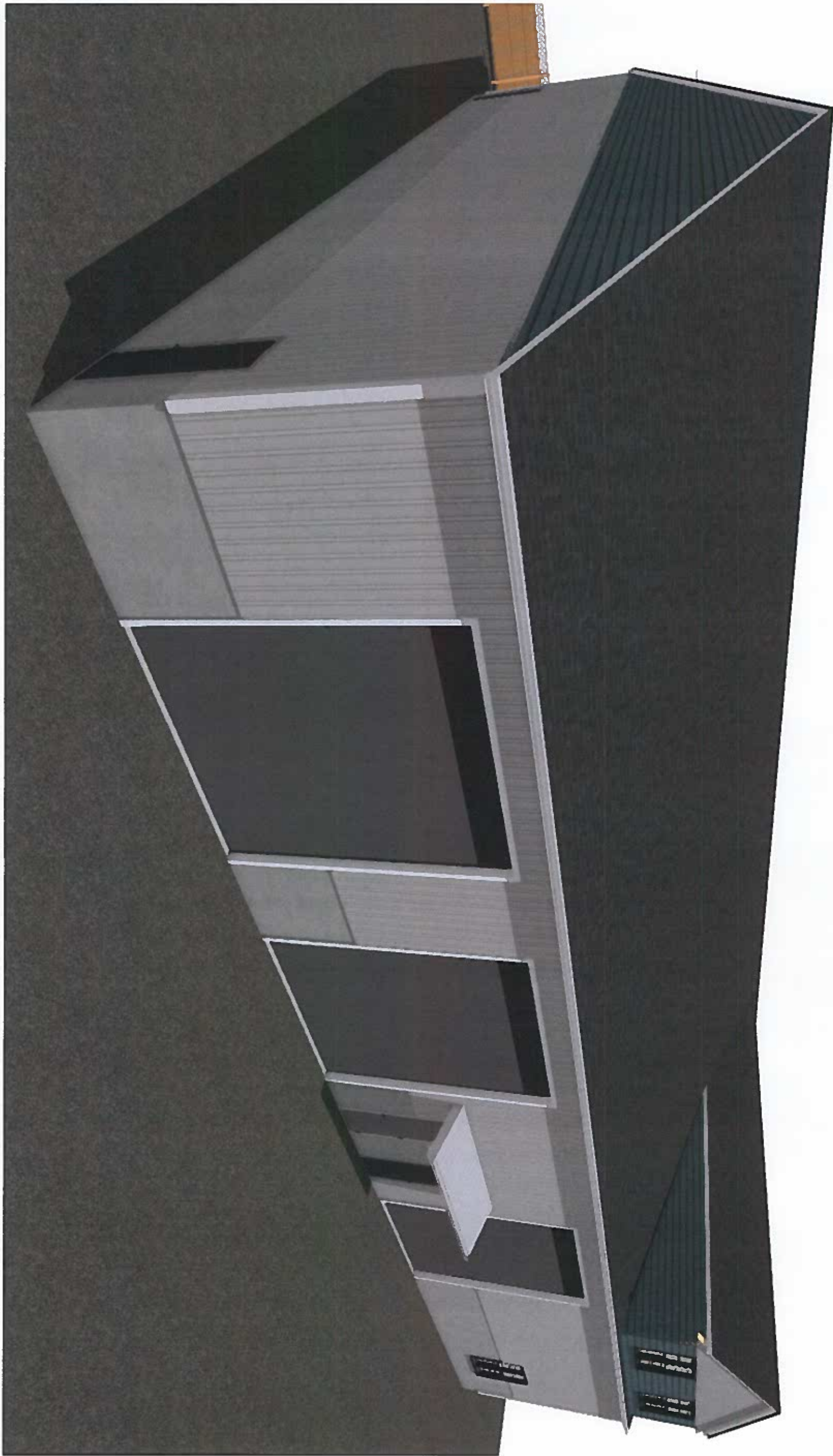
DATE: 12/17/2019
 SCALE: 3/16" = 1'-0"
 SHEET:

DRAWINGS PROVIDED BY:
Rodenhiser Builders

3d Images

Building #2

REVISION TABLE			
NUMBER	DATE	REVISED BY	DESCRIPTION



SHEET:

SCALE:
3/16" = 1'-0"

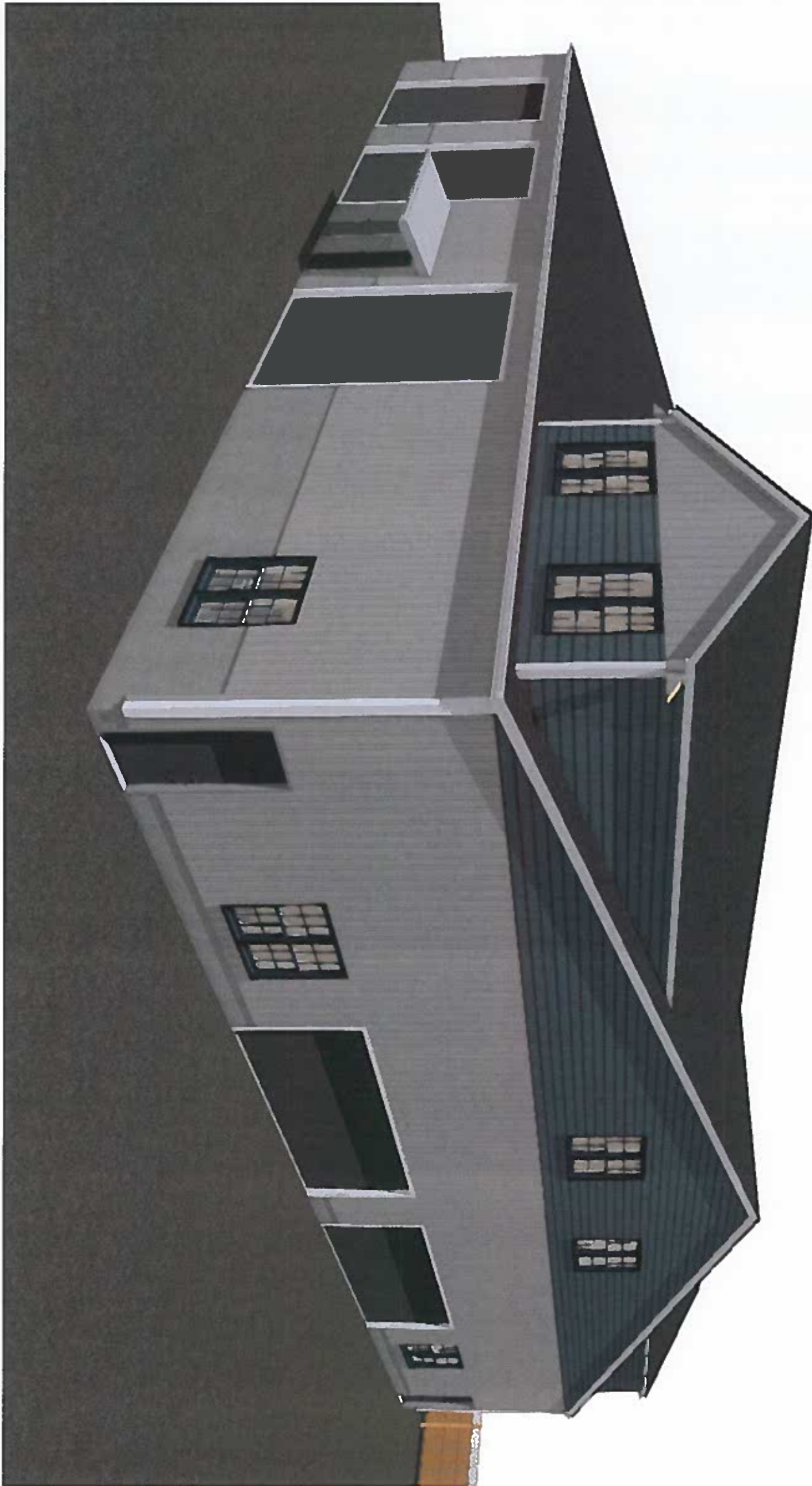
DATE:
12/17/2019

DRAWINGS PROVIDED BY:
Rodenhiser Builders

3d Images

Building #2

REVISION TABLE			
NUMBER	DATE	REVISED BY	DESCRIPTION



SHEET:

SCALE:
3/16" = 1'-0"

DATE:
12/17/2019

DRAWINGS PROVIDED BY:
Rodenhiser Builders

3d Images

Building #2

REVISION TABLE			
NUMBER	DATE	REVISED BY	DESCRIPTION