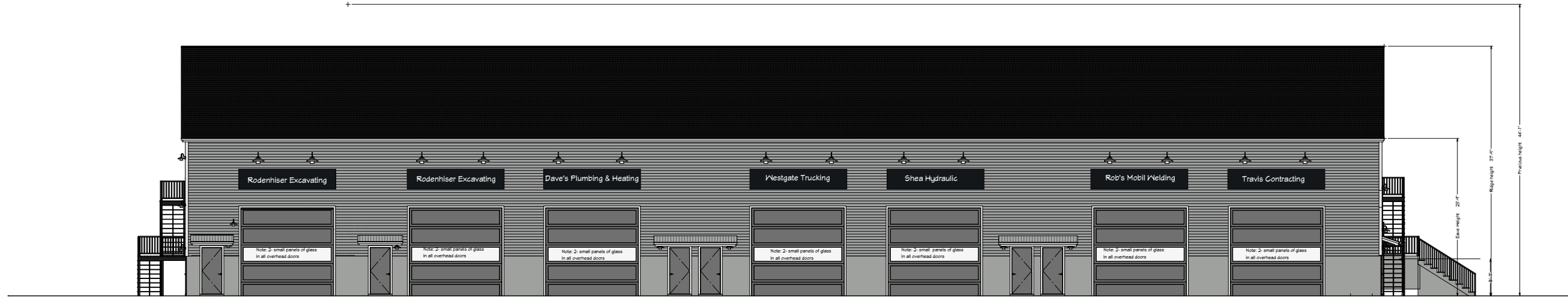
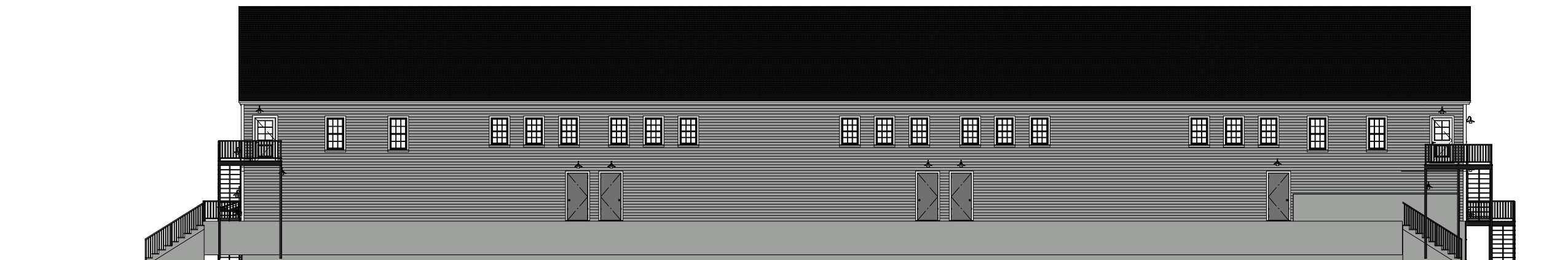


Previous design for roof was metal.  
 Now it is asphalt.  
 Previous design for siding was metal.  
 Now it is vinyl siding.

Previous height  
 44'-1"  
 Now 37'-9"  
 Lowered 6'-4"



South Elevation Front



North Elevation w lights

REVISION TABLE	NUMBER	DATE	REVISION BY	DESCRIPTION

Building #3

North Elevation  
 South Elevation

DRAWINGS PROVIDED BY:  
**Rodenhiser Builders**  
 70 Bartzak Drive  
 Holliston, Ma. 01746

DATE:

3/12/2020

SCALE:

3/16" = 1'-0"

SHEET:



East Elevation Right

Right Elevation

--

NUMBER	DATE	REVISION TABLE	REVISED BY	DESCRIPTION

Building #3

Right Elevation

DRAWINGS PROVIDED BY:  
**Rodenhiser Builders**  
 70 Bartzak Drive  
 Holliston, Ma. 01746

DATE:

3/12/2020

SCALE:

SHEET:



West Elevation

REVISION TABLE	
NUMBER	DATE

Building #3

Left Elevation

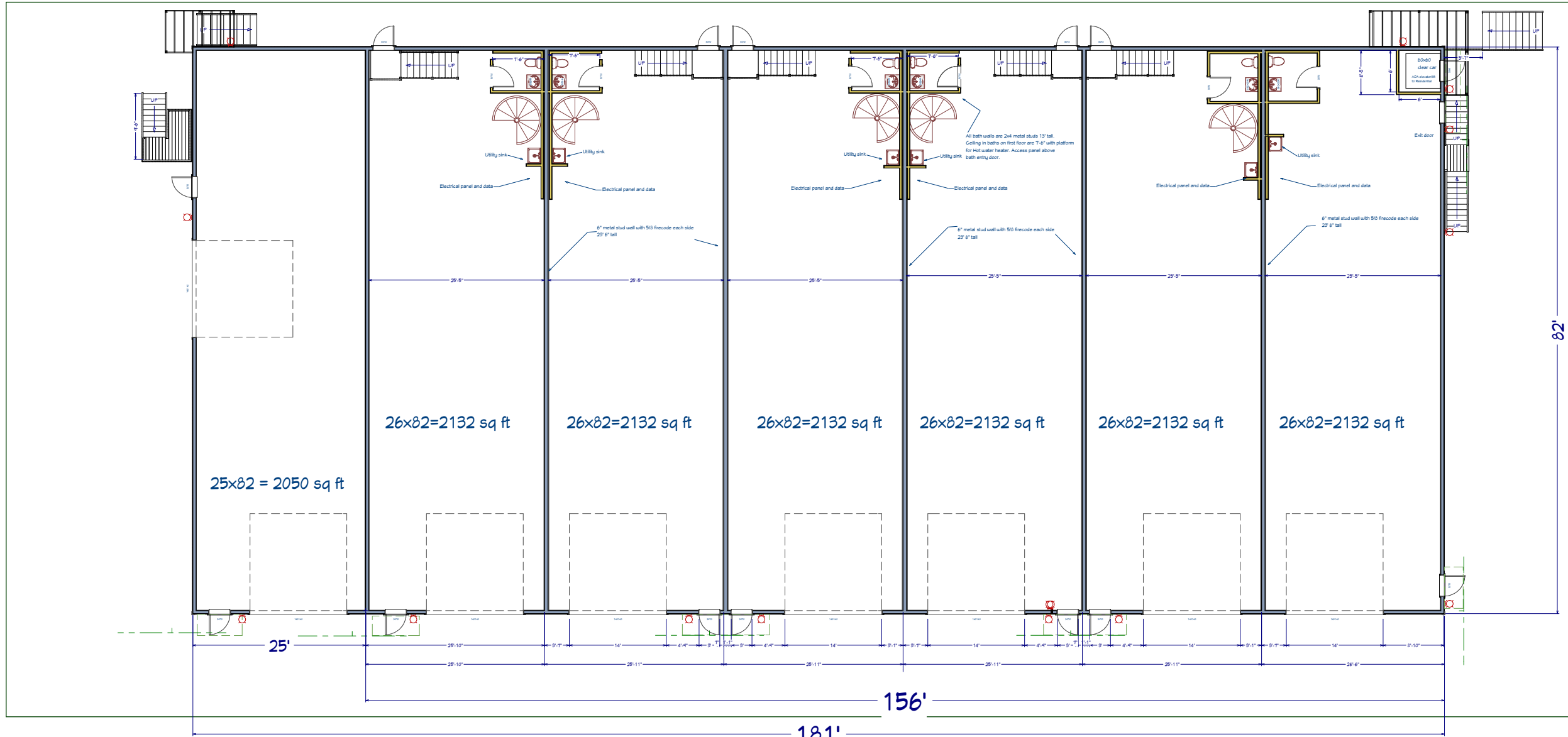
DRAWINGS PROVIDED BY:  
**Rodeniser Builders**  
 70 Bartzak Drive  
 Holliston, Ma. 01746

DATE:

3/12/2020

SCALE:

SHEET:



1st Floor

REVISION TABLE			
NUMBER	DATE	REVISION BY	DESCRIPTION

Building #3

First Floor  
Floorplan

DRAWINGS PROVIDED BY:  
**Rodeniser Builders**  
 70 Bartzak Drive  
 Holliston, Ma. 01746

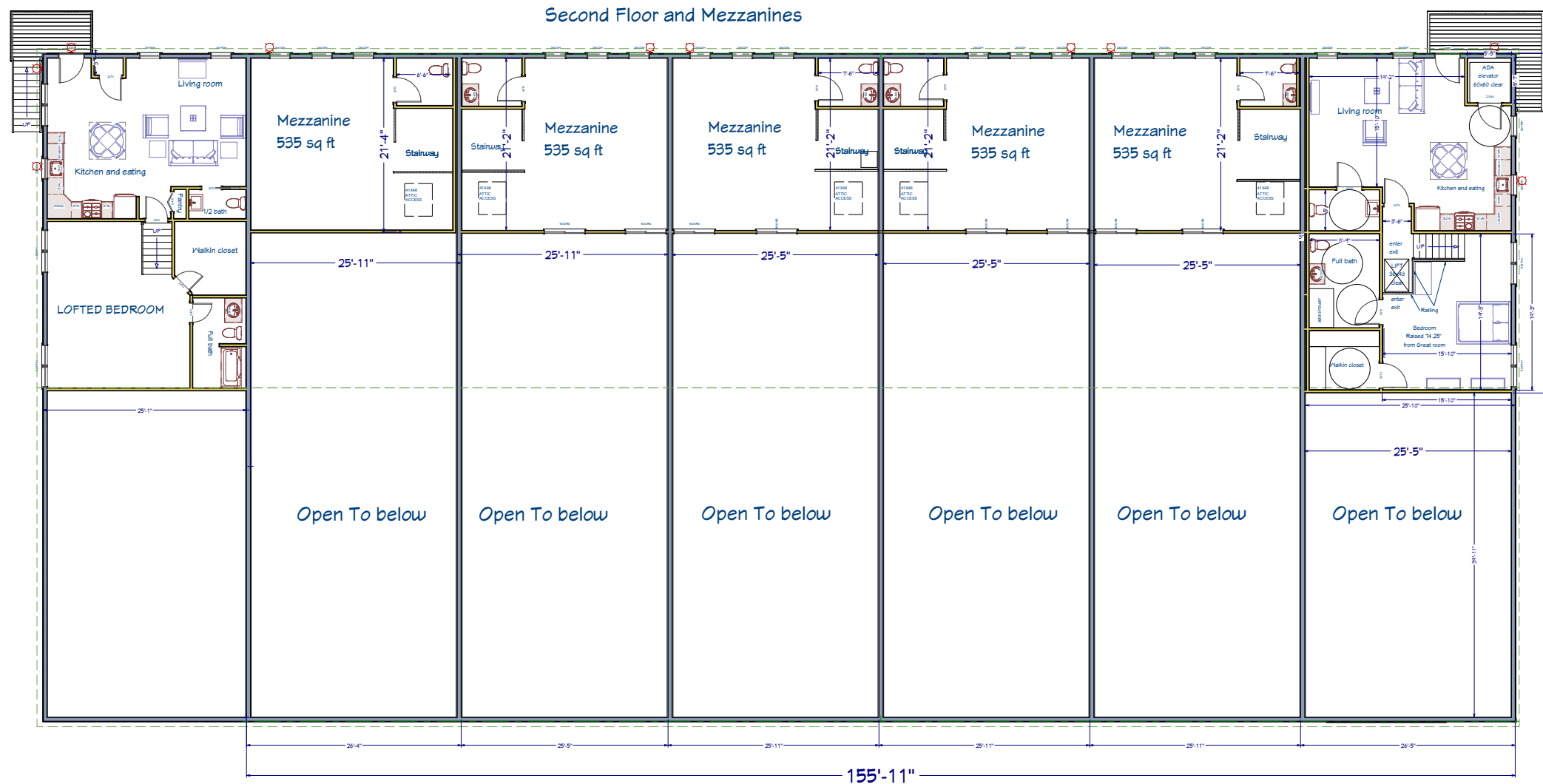
DATE:

3/12/2020

SCALE:

SHEET:

Residential  
1 Bedroom  
Unit 2  
Residential  
Unit Square Footage  
25'x41.5'=1037 sq ft.



Residential  
Unit Square Footage  
26'x41.75'=1085.5 sq ft.

Lofted Bedroom  
9 rises @ 8.25'=74.25 higher ceiling in this area.  
Kitchen and livingroom stay as is on mezzanine level.  
14' + 6'2.25'=20'-2.5" ceiling under lofted bedroom

2nd Floor

REVISION TABLE	REVISION BY	DESCRIPTION

Building #3

Second Floor  
Floorplan

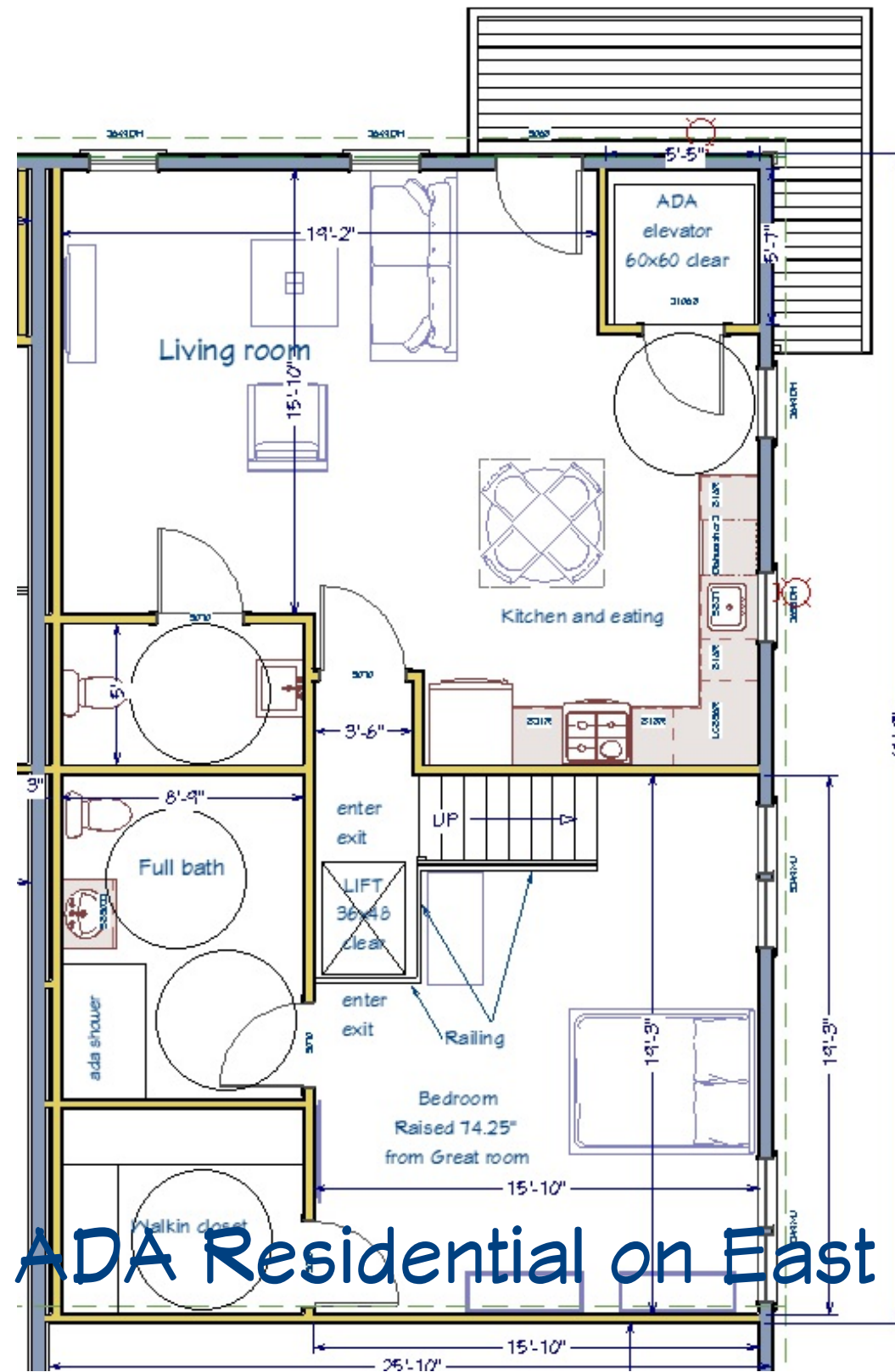
DRAWINGS PROVIDED BY:  
Rodeniser Builders  
70 Bartzak Drive  
Holliston, Ma. 01746

DATE:

3/12/2020

SCALE:

SHEET:



**Residential**  
**Unit Square Footage**  
**26'x41.75'=1085.5 sq ft.**

**Lofted Bedroom**  
 9 rises @ 8.25=74.25 higher ceiling in this area.  
 Kitchen and livingroom stay as is on mezzanine level.  
 14' + 6'2.25=20'-2.5" ceiling under lofted bedroom

# ADA Residential on East Elevation

REVISION TABLE			
NUMBER DATE REVISION BY DESCRIPTION			

**Building #3**

**ADA accessible residential**

DRAWINGS PROVIDED BY:  
**Rodenhiser Builders**  
 70 Bartzak Drive  
 Holliston, Ma. 01746

DATE:

3/12/2020

SCALE:

SHEET: