

**George F. Connors**  
**Counselor At Law**

10 Southwest Cutoff, Northboro, MA 01532  
Zero Cranberry Lane, Hopkinton, MA 01748  
Phone (508) 393-6055 • Fax (508) 393-5242  
george@gfconnorslaw.com

Mr. Peter Matchak, Planner  
Ashland Planning Board  
Town Hall  
Main Street  
Ashland, MA 01721

Vie email

February 3, 2022

Re: TJ's Spirits

Dear Mr. Matchak and Board Members:

Please find attached revised renderings and site plan. You will note, in particular the following changes:

- Planter boxes connected in front of the 'block' enclosure.
  - This allows for retaining the large heavy blocks surrounding the seating area.
- Specific note on retaining existing pavement in the immediate area.
  - This immediate area is very smooth having been recently paved prior to the permitted covid related seating.
- Concrete infill over the lifting rebar on the blocks, forming a continuous and smooth surface.
- A open fencing system has replaced the 'lattice' barrier as suggested.

We trust these revisions are responsive to the Boards concerns.

Very truly,

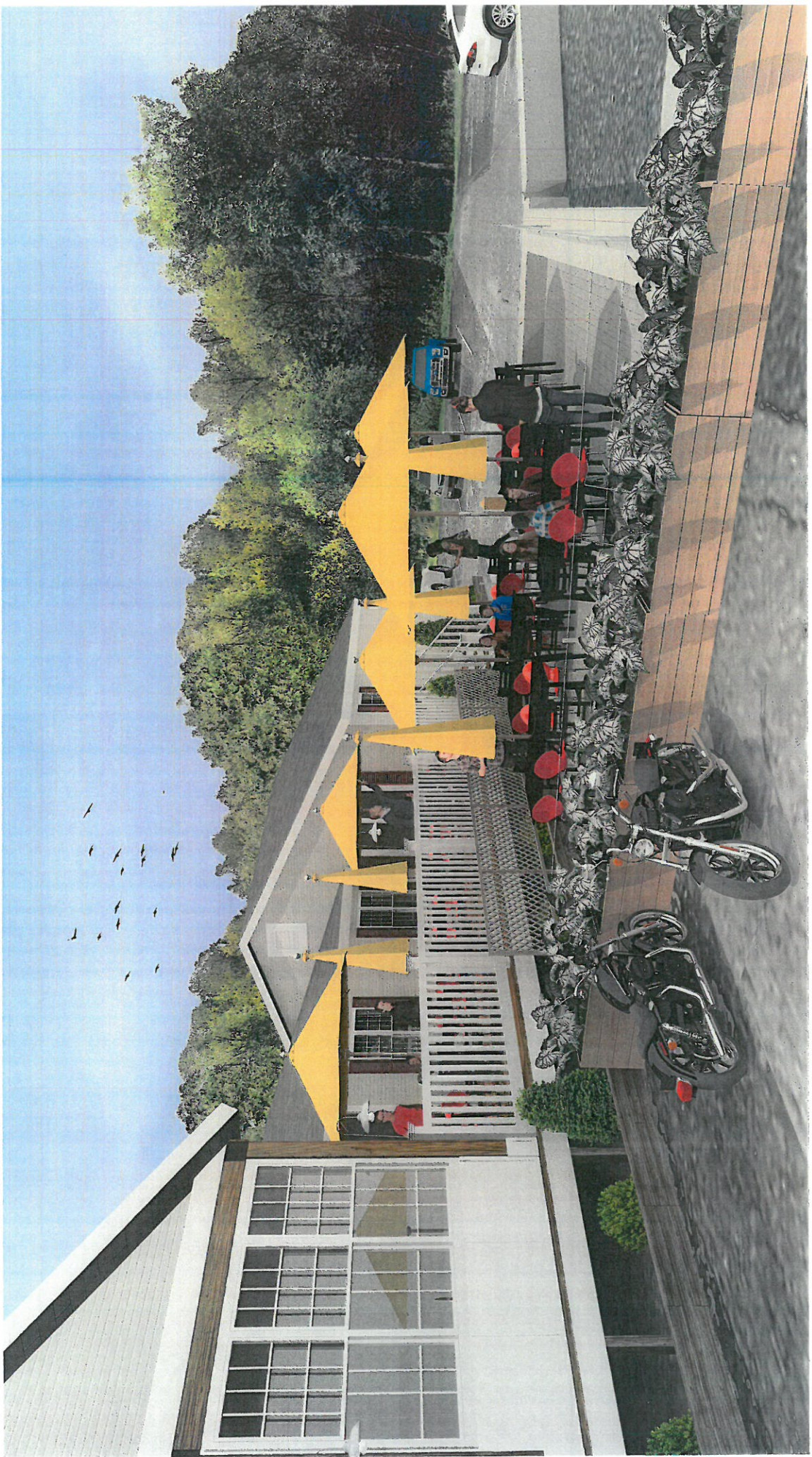
  
George Connors

Encls.



EXISTING PAVEMENT SURFACE  
TO REMAIN SEE 484

1 of 4



284



464

Existing  
paving  
to stop  
sealing  
to remove

464

