

**REMOVAL PROGRAM
AFTER ACTION REPORT
FOR THE
COLONIAL LACQUER & CHEMICAL CO. SITE
ASHLAND, MIDDLESEX COUNTY, MASSACHUSETTS
28 SEPTEMBER 2015 THROUGH 8 DECEMBER 2015**

Prepared For:

U.S. Environmental Protection Agency
Region I
Emergency Planning and Response Branch
5 Post Office Square, Suite 100
Boston, Massachusetts 02109-3912

CONTRACT NO. EP-S3-15-01

TDD NO. TO1-01-15-09-0005

SITE ID. 01LK

TASK NO. 0070

DC NO. R-00121

Submitted By:

Weston Solutions, Inc.
Superfund Technical Assessment and Response Team IV (START)
101 Billerica Avenue, Building 5, Suite 103
North Billerica, Massachusetts 01862

March 2016

TABLE OF CONTENTS

	<u>Page</u>
LIST OF APPENDICES	iii
1.0 INTRODUCTION	1
2.0 SITE CONDITIONS AND BACKGROUND	1
2.1 Site Location and Description.....	1
2.2 Site History/Previous Actions.....	1
3.0 SUMMARY OF FEDERAL RESPONSE ACTIONS	4
3.1 Organization of the Response	4
3.2 Mobilization and Site Preparation	4
3.3 Chronology of Removal Activities	4
3.4 Off-Site Disposal Waste Stream Summary.....	10
4.0 ESTIMATED COSTS OF THE REMOVAL ACTION.....	10
REFERENCES	11

LIST OF APPENDICES

Appendix A	Figures Figure 1 – Site Location Map Figure 2 – Site Diagram Figure 3 – Post-Excavation Sample Location and Total PCB Results Map Figure 4 – Post-Excavation Composite Sample Location Map
Appendix B	Sampling and Air Monitoring Summary Tables Table 1 – Post-Excavation Sampling and Total PCBs Results Summary Table 2 – Summary of Backfill Sample Analytical Results Table 3 – Summary of Pre- and Post-Excavation Total PCB Sample Results Table 4 – Summary of Post-Excavation Metals Sample Results Table 5 – Summary of Composite Sample Analytical Results Table 6 – Summary of DustTrak Air Monitoring Results Table 7 – Summary of Soil and Asphalt Pile Sample Analytical Results
Appendix C	Photodocumentation Log

1.0 INTRODUCTION

The following report, entitled *Removal Program After Action Report for the Colonial Lacquer and Chemical Co. Site, Ashland, Middlesex County, Massachusetts, 28 September 2015 through 8 December 2015*, is a chronological summary of the response actions taken by the U.S. Environmental Protection Agency (EPA), Region I, Emergency Planning and Response Branch (EPRB). The report details the situation as it developed, actions taken, and resources committed.

Site activities included: clearing vegetation and debris from site; establishing a clean zone (CZ), contamination reduction zone (CRZ), and exclusion zone (EZ); mobilizing a command post trailer, storage container, and heavy equipment; removing trees to facilitate removal activities; conducting contaminated soil excavation, stockpiling, and load-out for off-site disposal; disposing of contaminated drum carcasses and underlying soil; collecting confirmatory soil samples for polychlorinated biphenyls (PCBs) and metals laboratory (lab) analyses; collecting post-excavation composite samples for metals, cyanide, PCBs, pesticides, volatile organic compound (VOC), and semivolatile organic compound (SVOC) lab analyses; sampling and disposing of four 5-gallon buckets containing hazardous materials; and backfilling all excavated areas.

2.0 SITE CONDITIONS AND BACKGROUND

2.1 Site Location and Description

The Colonial Lacquer & Chemical Co. (Colonial) site (the site) is located at 409 Eliot Street in the southeastern portion of Ashland, Middlesex County, Massachusetts (see Appendix A, Figure 1) [1]. It is identified by the Town of Ashland Assessor's Office as Block 1 63 on Map 26. The geographic coordinates are approximately 42° 14' 29.7" north latitude and 71° 25' 19.0" west longitude. The site is bounded by Eliot Street on the north, Nancy Drive on the east, and residential properties on the south and west (see Appendix A, Figure 2) [2].

The site is generally level, sloping up slightly to the southwest, and is a 2.90-acre parcel in a residential neighborhood. It is currently zoned as residential, but operated as a paint and chemical manufacturing plant from 1937, when it was first developed, until 1986 when operations ceased. The site is currently inactive and abandoned, and includes multiple vacant structures in various states of disrepair. These include a former manufacturing building, a lab building, an office building, a Quonset hut, a pump house, and a storage shed. The site is overgrown with vegetation; much of the southern portion of the parcel is wooded; and pavement is present near the buildings, but is sometimes covered with a thin layer of soil, giving the impression of less pavement than is actually there. The site is only partially fenced, so access to the site is readily available. There are three piles of crushed, rusty drums/drum carcasses on a staging pad that is lined with plastic. The hardened remains of the drum contents cling to some drums, and have accumulated at the base of the pile on the pad [3].

2.2 Site History/Previous Actions

Available records indicate that the property was used as a paint and chemical manufacturing facility for its entire operational existence. A fire occurred at the site in March 1977, destroying the main manufacturing building. The replacement manufacturing building that is now on the site was constructed in 1978. The 1977 fire reportedly caused an explosion of chemical storage tanks and ruptured drums of finished product. In 1978, after the discovery of discharged chemical wastes and buried drums of chemical waste, the Massachusetts Department of Environmental Quality and

Engineering (MA DEQE) [now known as the Massachusetts Department of Environmental Protection (MassDEP)] ordered response actions. In 1981 Colonial was the subject of a Resource Conservation and Recovery Act (RCRA) Corrective Action. In 1985, MassDEP performed an inspection and issued a Notice of Violation (NOV) related to the improper storage of hazardous waste.

From 1986 to 1988, Phase I and Phase II (state) investigations were performed, and included installing groundwater monitoring wells, test pit explorations, seismic refraction and ground-penetrating radar surveys, soil and groundwater sampling, and sampling private drinking water wells. Fourteen underground storage tanks (USTs) used to store solvents were removed from the site, and approximately 80 55-gallon drums were excavated from two burial areas. In 1988 and 1989, MassDEP oversaw the sampling of private drinking water wells within 1,000 feet of the site. The analytical results did not show contaminants at levels above state drinking water standards.

In 1989, aromatic compounds, ketones, and ethyl acetate were detected in groundwater monitoring wells, and product was observed in one well. A recovery well was installed; however, no product was recovered, and the effort was discontinued. Additional subsurface assessments found piping associated with the former UST areas, an additional 1,000-gallon UST, and a buried rubbish pit.

In 1990 and 1991, approximately 800 cubic yards (cy) of contaminated soil from the former UST areas were excavated and treated on site by vacuum extraction and bioventing. Piping associated with the former USTs, the 1,000-gallon UST, and the rubbish pit were excavated and removed from the site. It was determined that the UST had not leaked. In 1993, the 800 cy of remediated soil was reused to backfill the open excavations.

In August 1996, MassDEP removed 22 drums containing semi-solid resins that were generated during the excavation of the rubbish pit. In July 1998, MassDEP collected surface soil samples in response to the concern of nearby residents that trespassing children were being exposed to contamination. One SVOC exceeded the state standard. No metals were detected above state standards.

While performing the soil sampling, MassDEP observed an aboveground storage tank (AST) containing petroleum product located outside the office building, as well as three 55-gallon drums of partially dried resins inside a wooden storage shed. In September 1999, MassDEP removed the drums, the AST, and approximately 4.1 tons of oil-impacted soil. During this process, they identified another UST with approximately 485 gallons of fuel oil, which was also removed. Also during 1999, MassDEP sampled monitoring wells. VOCs above state standards were detected in one well.

In 2005, a Phase II Environmental Site Assessment (ESA) was performed on behalf of MassDEP, and included excavation of test pits, installation of a groundwater monitoring well, collection of surface and subsurface soil samples, and collection of groundwater and drinking water samples. Lab analysis of drinking water samples did not detect concentrations of VOCs above state standards. Lab analysis detected volatile petroleum hydrocarbons (VPH), VOCs, lead, chromium, and PCBs in soil above state standards and extractable petroleum hydrocarbons (EPH), VPH, and VOCs in groundwater above state standards in a limited area; however, no cleanup actions were undertaken.

In 2012, EPA's Brownfields Program conducted a Hazardous Building Material Survey, which identified lead paint and PCBs in window glazing and caulk, and in 2013, conducted a Targeted

Brownfields Assessment to assess surface soil, subsurface soil, and groundwater. Analysis of soil and groundwater identified the presence of hazardous substances at concentrations above state standards, including PCBs above the state's Imminent Hazard Level. The Brownfields Program referred the site to the Removal Program.

In March 2014, EPA and the Weston Solutions, Inc., Superfund Technical Assessment and Response Team (START) initiated a Preliminary Assessment/Site Investigation (PA/SI) that included conducting a geophysical survey and collecting 28 surface soil samples. The geophysical survey was conducted in the southwestern corner of the site, adjacent to the former UST area, and overlapping the former drum and rubbish disposal areas. Magnetic anomalies were identified. The results of lab testing on surface soil samples performed at EPA's New England Regional Laboratory (NERL) identified the presence of PCBs. At two sample points, the concentrations of PCB Aroclor 1254 and lead exceeded EPA's Removal Management Level (RML) for residential settings and for which the Hazard Quotient (HQ) is three (RML 3).

In July 2014, test pits were dug to investigate the anomalies. Neither buried containers nor other evidence suggested the presence of hazardous substances. The excavator used for test pitting was then employed to get to the bottom of three piles of rusty drum carcasses for the purpose of sampling the underlying soil. It was discovered that the carcasses were on a soil staging area lined with polyethylene sheeting. The solid remains of container contents and soil were sampled from each pile. To better define the extent of soil contamination, additional soil samples were collected. Subsequently, additional rounds of sampling were conducted, including subsurface soil samples from a depth of 2 feet. NERL analytical data indicated that the concentration of PCB Aroclor 1254 exceeded EPA's RML 3 in surface soil at six locations, and at a depth of 1 foot at three additional locations. The RML 3 for lead was also exceeded at some of these locations.

The results of the drum pile samples indicated that the concentration of several hazardous substances exceeded the RML 3 standard, including Aroclor 1254 in two of the piles. A third drum pile sample failed the Toxicity Characteristic Leaching Procedure (TCLP) for lead, meaning it is a regulated hazardous waste. A summary of hazardous substances is shown below:

Hazardous Substance	Matrix	Maximum Concentration (ppm)
PCBs (Aroclor 1254)	soil	25.7
	waste	160
Lead	soil	450
	waste	20,000
Arsenic	waste	790
Benzidine	waste	0.33
Benzo(a)pyrene	waste	6.9
Dibenzo(a,h)anthracene	waste	2.1

The PA/SI also identified a limited number of intact drums separate from drum piles.

3.0 SUMMARY OF FEDERAL RESPONSE ACTIONS

3.1 Organization of the Response

ORGANIZATION OF THE RESPONSE		
Organization	Representatives	Responsibilities
U.S. Environmental Protection Agency (EPA) Emergency Planning and Response Branch (EPRB) 5 Post Office Square, Suite 100 Boston, Massachusetts 02109-3912 (617) 918-1229	Richard Haworth	EPA On-Scene Coordinator (OSC) responsible for the initiation, oversight, and completion of all removal activities. The OSC coordinated with State and local officials.
Weston Solutions, Inc. (Weston) Superfund Technical Assessment and Response Team (START) 3 Riverside Drive Andover, Massachusetts 01810 (978) 552-2129	Paul Callahan	START Site Leader that provided the OSC with technical assistance, site documentation, site health and safety monitoring, air monitoring, and draft and final report preparation.
Guardian Environmental Services (GES) 70 Albe Drive Newark, Delaware 19702 (877) 437-0007	Carl Duffey	Response Manager (RM) for the Emergency and Rapid Response Services (ERRS) contractor that performed removal activities. The RM was responsible for oversight and organization of mobilization, demobilization, and waste removal activities.

3.2 Mobilization and Site Preparation

The site-specific removal Health and Safety Plan (HASP) was reviewed and signed by all personnel before any work commenced. In addition, emergency telephone numbers and directions to the hospital were posted and work zones were delineated. All activities were performed in appropriate personal protective equipment (PPE) in accordance with the HASP. The HASP was prepared by START personnel as a separate document, entitled *Health and Safety Plan for the Colonial Lacquer and Chemical Co. Site, Ashland, Middlesex County, Massachusetts* [4]. On 28 September 2015, the mobilization and staging of Emergency Rapid Response Services (ERRS) equipment was initiated.

3.3 Chronology of Removal Activities

Week of 28 September 2015

The ERRS crew arrived on site and began clearing trees and brush using chainsaws and a Bobcat with a grappler attachment to move cut vegetation. Hay bales and silt fence were installed to control erosion. An office trailer, storage trailer, sanitary facilities, generator, and an excavator were delivered (see Appendix C, Photodocumentation Log). An electrician connected the generator to the office trailer [5].

Week of 5 October 2015

EPA, ERRS, and START personnel mobilized to the site and began removal activities. The following personnel mobilized to the site, with any changes to site personnel noted on subsequent entries:

OSC – EPA	Richard Haworth
START – Weston	Paul Callahan
Response Manager – GES	Carl Duffey
ERRS – GES - Operators/Laborers	Juan Perez, Operator Francisco Bautista, Laborer/Operator

Clearing was completed. Tree stumps were removed and placed together out of the way for subsequent disposal. Excavation of PCB-contaminated soil began in the vicinity of the southwest corner of the manufacturing building, and progressed toward the southeast corner. Excavation was also completed at an isolated area of contamination in the woods at the southern end of the site. To minimize the potential for excavation to spread contaminants to lower depths, the top portion of a soil layer to be excavated was removed first, then a lower portion. Similarly, the excavator bucket was fitted with a piece of steel across the teeth of the bucket to create a straight edge. Excavated soil was placed in a stockpile located within the area to be excavated.

Areas of asphalt covered with 1 foot or less of soil were discovered within areas to be excavated. Soil above the asphalt was excavated as planned. The asphalt and soil below the asphalt was not disturbed.

The lateral extent of the excavation was defined by the results of site investigation soil testing, in conjunction with site features such as buildings, pavement, or stone walls. In the absence of a subsurface obstruction, the depth of excavation was also defined by site investigation test results. For example, if the total concentration of PCBs at 2 feet was greater than the action level of 1 part per million (ppm), but less than 1 ppm at 3 feet, the excavation would extend to 3 feet. However, due to program constraints, excavation was limited to a maximum of 3 feet, regardless of the concentration at 3 feet. This constraint could be waived under circumstances such as finding buried drums or other source material, and would be discussed should it occur.

Air monitoring was initiated concurrent with the start of excavation, using four TSI DustTrak II particulate monitors (see Appendix B, Table 6). Except when raining, particulate monitors were placed around the excavation area and the stockpile where soil was being placed, so that at least one monitor was always downwind, regardless of wind direction. The action level was not exceeded at any time this week. This condition was expected to continue throughout the project. An exceedance would be discussed if it occurred. Results were posted in the office trailer.

Confirmation samples were collected from the bottom of excavated areas at the same sample locations established during the site investigation, although new sample points would be established if circumstances warranted (see Appendix A, Figure 3). Samples were sent to EPA's NERL for PCB analysis (see Appendix B, Table 1, and Appendix B, Table 3). A total PCB concentration less than 1 ppm supported terminating the excavation. An excavation that reached the maximum of 3 feet was sampled to document final conditions for future use. Lab testing also included metals, as lead was elevated at some locations during the site investigation (see Appendix B, Table 4). Confirmation samples would be collected and delivered to NERL each week on an as-needed basis.

Week of 12 October 2015

Except for the footprint of the stockpile, excavation was completed on the southeast side of the manufacturing building. Excavation began and was completed on the northeast side of the manufacturing building. Excavated soil from this area was transported to the stockpile using a rubber-tracked skid steer. A chain-link fence along Eliot Street was removed as necessary to permit excavation. High-visibility fence was placed as a temporary site barrier, and warning signs posted. For safety, only the top 1 foot of soil was removed in the vicinity of a telephone pole and stabilizing guy-wire. Additional tree and vegetation clearing was conducted to facilitate removal activities.

The first composite soil sample was collected from the excavated soil stockpile and sent to an ERRS-subcontracted lab for disposal analysis. Additional samples would be collected to meet the anticipated testing frequency required by disposal facilities. Testing frequency would be adjusted as necessary when the low-cost disposal option was identified for this project.

Excavation began in the area between the manufacturing and office buildings, and was completed. Soil from this area was placed in a second stockpile located on a paved area behind (southwest) of the office building. A limited number of drums at the site were inspected. One drum was partially full, but all others were empty. Empties were crushed and added to the existing drum pile categorized as hazardous waste based on sampling performed during the site investigation. A sample of the drum was collected and sent to a lab for disposal analysis.

A representative from MassDEP visited the site. The OSC agreed to collect three 3-point composite samples from the bottom of excavated areas, and perform a full suite of analyses to more fully define conditions when excavation was complete (See Appendix A, Figure 4, and Appendix B, Table 5). It was agreed that high visibility fencing was adequate to serve as an indicator of the extent of excavation for subsurface work that may occur.

Week of 19 October 2015

Excavation began at the lab building on the northwest side, progressing southeast between the lab building and Eliot Street. Just before reaching the end of this area where it meets the pavement leading into the site from Eliot Street, the excavator broke an unmarked water service connection to the lab building, and the adjacent, parallel sewer service connection. Although Dig Safe marked the property before site work began, this connection was not identified with any marks. Water flowed into the excavated area, but did not exceed the capacity of the excavation, as it drained out via the sewer pipe. The Ashland Water Department was called, responded to the site, and fixed the leak. Sheets of plywood were placed over the excavation due to its proximity to Eliot Street, and further secured with high visibility fence. Subsequently, after consulting with Town officials, a plug was installed in the sewer line. Excavation began on the southeast side of the lab.

Lab test results of the drum sample were received. Based on the nearly complete absence of contaminants, the contents were added to the soil stockpile. The empty drum was crushed and added to the existing crushed drum pile categorized as non-hazardous waste based on testing performed during the site investigation.

Week of 26 October 2015

Excavation on the southeast side of the lab was completed. Based on lab results, additional soil was excavated from the southeast and northeast sides of the manufacturing building.

Two of the three drum piles were loaded into trucks and shipped off site for disposal. Additional information about waste disposal would be provided in later reports when it became available. Contaminated soil from under each pile was excavated into a stockpile at their respective locations. This was facilitated by the visually different color and nature of the soil used to create the drum staging area.

Clean soil from off site began arriving. Backfilling began in the vicinity of the southwest corner of the manufacturing building, filling a gap in a semi-circular road through the site. This allowed trucks to enter the site using the southern gate, and to exit using the northern gate. Backfill that arrived on site was periodically tested for PCBs and metals to supplement a full analysis performed on a sample collected from the source prior to the first delivery arriving (see Appendix B, Table 2).

Four 5-gallon buckets found on site were sampled, and hazardous categorization testing was performed. Test results together with container information were used to arrange for disposal.

Week of 2 November 2015

Based on lab data, an additional foot of soil was excavated from some areas and added to a stockpile. As time permitted, backfill was placed in areas that were either at the maximum 3-foot depth, or where lab data showed the total concentration of PCBs was less than 1 ppm at all sample locations. Nine truckloads of backfill were delivered this week (279.76 tons).

One truckload of non-Toxic Substances Control Act (TSCA), non-RCRA-regulated crushed drums and one truckload of tree stumps were shipped off site for disposal at a landfill.

A report was provided by NERL pertaining to a sample collected from the bottom of the excavation at the point where the water and sewer line repair took place. Test results indicated the total concentration of PCBs was less than 1 ppm. In conjunction with the Ashland Water Department, a new valve and riser were installed on the water line, and the excavated area was backfilled first with sand around the valve and pipe, then clean fill up to grade.

Week of 9 November 2015

Based on lab data, an additional foot of soil was excavated from some areas and added to the stockpile behind the office building. Seventeen truckloads (526.7 tons) of PCB-contaminated soil were shipped off site for beneficial re-use as daily cover at a landfill, depleting the stockpile adjacent to the manufacturing building by approximately 95%. Twelve truckloads of backfill were delivered (383.87 tons). Backfill was placed in areas that were either at the maximum 3-foot depth, or where lab data showed the total concentration of PCBs was less than 1 ppm at all sample locations.

Two truckloads of TSCA-regulated soil from under the TSCA-regulated drum pile were shipped off site to a landfill. As this soil stockpile was loaded, an additional 6 inches was excavated as a precaution.

Two soil samples were collected at the former location of the TSCA-regulated drum pile, two at the former location of the RCRA-regulated pile, and one at the former location of the non-TSCA, non-RCRA-regulated drum pile.

Week of 16 November 2015

The balance of the stockpile adjacent to the manufacturing building was moved to the stockpile behind the office building using a front-end loader mobilized to the site this week. Soil under the stockpile was excavated to the planned depth of 2 feet, and moved to the stockpile behind the office with the loader. Samples were collected at the 2-foot depth, then an additional 1 foot was excavated and stockpiled on an outcrop of asphalt adjacent to the manufacturing building. This was done so that in the event data supported disposal of the additional foot, it could be loaded into trucks without further handling, and so that during the week that passed awaiting lab results, backfilling could proceed over the entire excavated area adjacent to the manufacturing building, except for a space to replace the additional foot of soil in the event data showed disposal was not required. Note that data received later supported disposal, and the soil was shipped off site.

Fifteen truckloads (451.64 tons) of PCB-contaminated soil were shipped off site. Three truckloads of backfill were delivered (96.41 tons).

Soil commingled with a pile of asphalt was sampled. Located near the crushed drum piles, the asphalt pile was a pre-existing feature, and did not result from EPA excavation activities.

Week of 23 November 2015

Twelve truckloads of trees that were cleared and stockpiled at the start of the project were shipped off site for re-use. Two loads of backfill were delivered (66.45 tons). The ERRS crew was on site only 2 days this week due to the Thanksgiving holiday.

On Monday of this week, the OSC was notified by NERL that it can no longer provide results in 7 days. Working with the Region's Quality Assurance Program, a lab that could provide results in 48 hours was secured through EPA's Contract Laboratory Program (CLP). A group of samples collected last week that had already been delivered to NERL were brought back to the site, repackaged, and driven to a CLP lab in Rhode Island on Wednesday, which prevented a project delay waiting for lab results.

Lab results pertaining to samples collected at the former location of the TSCA-regulated and RCRA-regulated drum piles were received, and showed the total concentration of PCBs was less than 1 ppm or non-detect (ND). Based on a lab result of 2 ppm PCBs in the sample collected at the former location of the non-RCRA, non-TSCA drum pile, an additional 6 inches was excavated. The excavation extended to available sample points that were less than 1 ppm PCBs, and the asphalt pile. A sample was collected from the re-excavated area, and three others from the perimeter where data from previous sampling was not available.

Lab results were received for soil from the asphalt pile, and included a full range of analyses, not just PCBs (see Appendix A, Table 7). Because virtually all hazardous substances were below detection limits, the asphalt pile was left in place.

Week of 30 November 2015

Lab results pertaining to samples collected in and around the re-excavation at the non-TSCA, non-RCRA drum pile were received. One perimeter sample was over 1 ppm. An additional 6 inches was excavated at this location, and was defined by the less than 1 ppm sample points and the paved site road. One sample was collected from the center of this re-excavated area.

Seventeen truckloads of PCB-contaminated soil were shipped off site (521.04 tons). Twenty-six truckloads of backfill were delivered (839.76 tons).

The chain-link fence along Eliot Street (removed earlier to facilitate excavation) was re-installed. The four 5-gallon containers tested on site earlier were shipped off site for disposal in two 55-gallon drums.

Week of 7 December 2015

The final three truckloads of PCB-contaminated soil were shipped off site (95.23 tons). The last truckloads of backfill delivered the previous week were placed where needed.

The lab result for the sample collected from the re-excavated area associated with the non-TSCA, non-RCRA drum pile was received. The total concentration of PCBs was ND.

Grass seed was spread over backfilled excavated areas. Hay bales used to weigh down plastic covering soil stockpiles during the cleanup were broken up and spread over grass seed in the area southeast of the manufacturing building. Silt fence installed at the bottom of the slope in this area was left in place to prevent soil from eroding onto the paved site road, and then onto Eliot Street. For the same reason, additional silt fence was installed at other locations to prevent backfilled soil from washing off site during a heavy rain.

Caution tape and warning signs used to secure the site were removed. All personnel and equipment were demobilized by 9 December 2015.

3.4 Off-Site Waste Stream Disposal Summary

Waste Stream	Medium	Quantity	Treatment	Disposal/Reuse
Soil - Non-TSCA Regulated (PCBs < 50 ppm)	Soil	1594.61 tons	None	Reused as landfill daily cover
Crushed Empty Drums - RCRA-Regulated (D008)	Drums	15 tons	Encapsulation	Landfill
Crushed Empty Drums - TSCA Regulated (PCBs > 50 ppm)	Drums	15 tons	None	Landfill
Soil - TSCA Regulated (From under TSCA drums)	Soil	62 tons	None	Landfill
Crushed Empty Drums - Non-RCRA/Non-TSCA-Regulated	Drums	16.19 tons	None	Landfill
Tree Stumps	Wood	6.19 tons	None	Landfill
Trees	Wood	36 tons	None	Mulch
Hazardous Liquids	Buckets	20 gallons	None	Landfill

4.0 ESTIMATED COST OF THE REMOVAL ACTION

An estimate of EPA funds expended to complete this Removal Action are summarized in the table below. Other than START costs, figures were provided by EPA.

COST CATEGORY	CEILING	SPENT 8/18/15 - 2/26/16	REMAINING
ERRS Contractor	\$520,000.00	\$366,539.00	\$153,461.00
START Contractor	\$120,000.00*	\$106,133.00	\$13,867.00
Environmental Services Assistance Teams Contractor	\$50,000.00*	\$37,984.00	\$12,016.00
Contract Lab Program	\$10,000.00*	\$6,345.00	\$3,655.00
Extramural Total	\$700,000.00	\$517,001.00	\$182,999.00

* Ceiling established or adjusted using contingency funds authorized in the Action Memorandum.

This accounting of expenditures is an estimate based on figures known to the OSC at the time this report was written. The cost accounting provided in this report does not necessarily represent an exact monetary figure which the government may include in any claim for cost recovery.

REFERENCES

- [1] United States Geologic Survey (USGS)/Micropath. Natick and Medfield, MA Quadrangles (7.5 minute series topographic map).
- [2] Esri, i-cubed, USDA, USGS, AEX, GeoEye, Getmapping, Aerogrid, IGN, IGP, and USGS/Micropath.
- [3] Memorandum from Richard Haworth, On-Scene coordinator, EPA Region I, through William Lovely EPA Region I, to Nancy Barmakian, Office of Site Remediation and Restoration, EPA Region I, regarding Request for a Removal Action at the Colonial Lacquer and Chemical Company Site, a.k.a. Former Cadillac (sic) Paint & Varnish Company Site, 409 Eliot Street, Ashland, Middlesex County, Massachusetts 01721, dated 10 August 2015, signed 18 August 2015.
- [4] Weston Solutions, Inc., Health and Safety Plan for the Colonial Lacquer and Chemical Co. Site, Ashland, Middlesex County, Massachusetts. September 2015.
- [5] Weston Solutions, Inc. Logbook No. 0003A.

Appendices

Appendix A

Figures

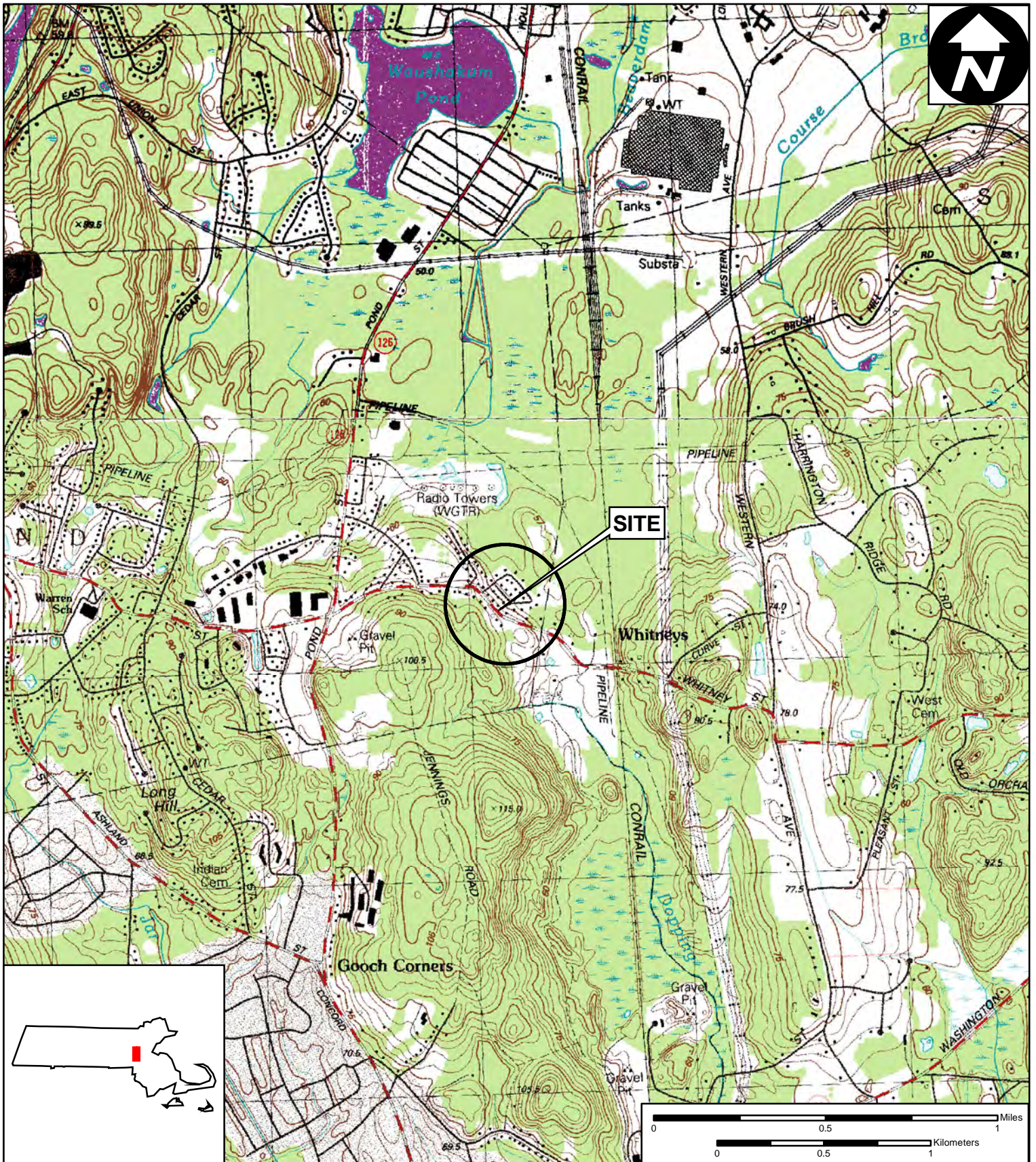


Figure 1

Site Location Map

**Colonial Lacquer & Chemical Co.
409 Eliot Street
Ashland, Massachusetts**

**EPA Region I
Superfund Technical Assessment and
Response Team (START) IV
Contract No. EP-S3-15-01**

TDD Number: TO1-01-15-09-0005
Created by: J. Saylor
Created on: 18 March 2014
Modified by: C. Dupree
Modified on: 7 January 2016

Data Sources:

Topos: MicroPath/USGS
 Quadrangle Names: Natick and Medfield, MA
 All other data: START





Figure 2

Site Diagram

**Colonial Lacquer & Chemical Co.
409 Eliot Street
Ashland, Massachusetts**

EPA Region I

**Superfund Technical Assessment and
Response Team (START) IV
Contract No. EP-S3-15-01**

TDD Number: TO1-01-15-09-0005

Created by: J. Saylor

Created on: 18 March 2014


Modified by: C. Dupree

Modified on: 8 February 2016

Legend

 Site Boundary



0 50 100 200
 Feet

Data Sources:

Imagery: Esri, i-cubed, USDA, USGS, AEX,
GeoEye, Getmapping, Aerogrid, IGN, IGP
Topos: MicroPath
All other data: START





Figure 3
Post-Excavation Sample Location and Total PCB Results Map
 Colonial Lacquer & Chemical Co.
 409 Eliot Street
 Ashland, Massachusetts

EPA Region I
 Superfund Technical Assessment and Response Team (START) IV
 Contract No. EP-S3-15-01

TDD Number: TO1-01-15-09-0005
 Created by: R. Guerin
 Created on: 2 December 2014
 Modified by: C. Dupree
 Modified on: 10 March 2016

LEGEND

- < 1.0 ppm
- ≥ 1.0 ppm
- Soil and Asphalt Pile
- × - Fenceline
- Asphalt Outcrops
- Roadway
- Excavation Extent
- Stockpiled Drums
- Buildings

PCB = Polychlorinated biphenyl
 SS## = Pre-excavation soil sample location with corresponding post-excavation sample collected (see Table 1).
 ' = Foot
 " = Inch
 ND = Not detected
 ppm = parts per million
 RS## = Post-excavation soil sample location with no corresponding pre-excavation soil sample collected (see Table 1).
 TSCA = Toxic Substances Control Act
 RCRA = Resource Conservation and Recovery Act

When printed on 11x17 inch paper,
 1" = 50 feet.

0 25 50 75 100
 Feet

Data Sources:
 Imagery: Esri, i-cubed, USDA, USGS, AEX, GeoEye, Getmapping, Aerogrid, IGN, IG, Topos: MicroPath
 All other data: START





Figure 4

**Post-Excavation
Composite Sample Location Map**

**Colonial Lacquer & Chemical Co.
409 Eliot Street
Ashland, Massachusetts**

**EPA Region I
Superfund Technical Assessment and
Response Team (START) IV
Contract No. EP-S3-15-01**

TDD Number: TO1-01-15-09-0005
 Created by: R. Guerin
 Created on: 2 December 2014
 Modified by: C. Dupree
 Modified on: 10 March 2016

LEGEND

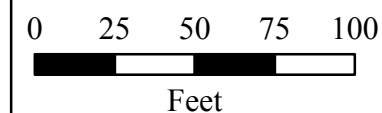
- Composite Sample
- x - Fenceline
- Asphalt Outcrops
- Roadway
- ▭ Excavation Extent
- ▭ Stockpiled Drums
- Buildings
- Site Boundary

RS## = Post-excavation composite sample aliquot location.

' = Foot

Samples shown on this figure were collected for full-suite analysis at the EPA New England Regional Laboratory (NERL). Analyses included polychlorinated biphenyls (PCBs), volatile organic compounds (VOCs), semivolatile organic compounds (SVOCs), pesticides, metals, and cyanide.

When printed on 11x17 inch paper,
1" = 60 feet.



Data Sources:

Imagery: Esri, i-cubed, USDA, USGS, AEX, GeoEye, Getmapping, Aerogrid, IGN, IG.
 Topos: MicroPath
 All other data: START



Appendix B

Sampling and Air Monitoring Summary Tables

TABLE 1
POST-EXCAVATION SAMPLING AND TOTAL PCBs RESULTS SUMMARY
COLONIAL LACQUER & CHEMICAL CO. SITE
ASHLAND, MASSACHUSETTS

Sample Location No.	Scribe Sample No.	Date	Time	Corresponding PA/SI or Removal Action Sample No.	Total PCBs (mg/Kg)			Sample Location/Description
					NERL ¹	ERRS ²	CLP ³	
RS01 ⁴	01LK-0001	10/7/2015	1020	N/A	0.11	---	---	Red-stained soil at base of 2-foot manufacturing building excavation near storage shed.
RS02	01LK-0002	10/9/2015	1145	SS-04/114/414	ND	---	---	In woods at base of excavation.
RS03	01LK-0003	10/9/2015	1210	SS--301	ND	---	---	South end of 3-foot manufacturing building excavation.
RS04	01LK-0004	10/9/2015	1212	SS-203	ND	---	---	North edge of 2-foot manufacturing building excavation.
RS05	01LK-0005	10/9/2015	1215	SS-302	0.76	---	---	West edge of 3-foot manufacturing building excavation.
RS06	01LK-0006	10/16/2015	0945	N/A	1.73	---	---	Northwest edge of 2-foot excavation north of manufacturing building, in front of trees, easternmost.
RS07	01LK-0007	10/16/2015	0950	N/A	0.93	---	---	Northwest edge of 2-foot excavation north of manufacturing building, in front of trees, center.
RS08	01LK-0008	10/16/2015	0955	N/A	ND	---	---	Northwest edge of 2-foot excavation north of manufacturing building, in front of trees, westernmost.
RS09	01LK-0009	10/16/2015	1425	SS-400	0.30	---	---	Northeast edge of 3-foot excavation north of manufacturing building.
RS10	01LK-0010	10/16/2015	1430	SS-09	1.64	---	---	Center of 2-foot excavation north of manufacturing building.
RS11	01LK-0011	10/16/2015	1430	SS-09	0.83	---	---	Center of 2-foot excavation north of manufacturing building, duplicate of RS10.
RS12	01LK-0012	10/16/2015	1435	SS-08	1.10	---	---	Southeast edge of 2-foot excavation north of manufacturing building.
RS13	01LK-0013	10/16/2015	1440	SS-205	ND	---	---	Center of north edge of 2-foot excavation south of manufacturing building.
RS14	01LK-0014	10/16/2015	1445	SS-07	ND	---	---	Center (northern) of west edge of 2-foot excavation south of manufacturing building.
RS15	01LK-0015	10/16/2015	1450	SS-06	4.15	---	---	Center (southern) of west edge of 2-foot excavation south of manufacturing building.

TABLE 1
POST-EXCAVATION SAMPLING AND TOTAL PCBs RESULTS SUMMARY
COLONIAL LACQUER & CHEMICAL CO. SITE
ASHLAND, MASSACHUSETTS

Sample Location No.	Scribe Sample No.	Date	Time	Corresponding PA/SI or Removal Action Sample No.	Total PCBs (mg/Kg)			Sample Location/Description
					NERL ¹	ERRS ²	CLP ³	
RS16	01LK-0016	10/19/2015	0910	SS-206/210	0.38	---	---	Northeast corner of 2-foot excavation south of manufacturing building.
RS17	01LK-0017	10/19/2015	0915	SS-110	ND	---	---	Western side of 2-foot excavation north of manufacturing building inside fence line.
RS18	01LK-0018	10/19/2015	0920	SS-404	ND	---	---	Western side of 2-foot excavation north of manufacturing building between fence line and stone wall.
RS19	01LK-0019	10/20/2015	1450	N/A	0.14	---	---	Between fence and stone wall at northwest end of site in line with SS-18, 0-3 inch depth, towards road (collected by EPA).
RS 20	01LK-0020	10/20/2015	1458	N/A	0.17	---	---	Between fence and stonewall at northwest end of site in line with SS-307, 0-3 inch depth, towards back of site (Collected by EPA).
RS21	01LK-0021	10/22/2015	0955	SS-305	0.27	---	---	Southern edge of 2-foot excavation at intersection with 1-foot excavation north of manufacturing building.
RS22	01LK-0022	10/22/2015	0950	SS-306	0.10	---	---	Western edge of 2-foot excavation north of manufacturing building at intersection with non-excavated area.
RS23	01LK-0023	10/22/2015	1010	SS-111	ND	---	---	Northern edge of 3-foot excavation at intersection with 1-foot excavation between manufacturing and office buildings.
RS24	01LK-0024	10/22/2015	1005	SS-207	0.12	---	---	Southern edge of 3-foot excavation at intersection with no excavation between manufacturing and office buildings.
RS25	01LK-0025	10/22/2015	1035	SS-104	ND	---	---	Northwest corner of site in 1-foot excavation north of lab building.
RS26	01LK-0026	10/22/2015	1020	N/A	2.01	---	---	In middle of 1-foot excavation between manufacturing and office buildings.
RS27	01LK-0027	10/22/2015	1045	SS-407	0.40	---	---	In excavation for water line break and repair at approximately 3-foot depth.
RS28	01LK-0028	10/22/2015	0955	SS-305	0.33	---	---	Southern edge of 2-foot excavation at intersection with 1-foot excavation north of manufacturing building, duplicate of RS21.
RS29	01LK-0032	10/23/2015	1207	SS-202	0.87	---	---	In middle of 2.5-foot excavation south of manufacturing building.
RS30	01LK-0033	10/23/2015	1215	SS-105	1.73	---	---	From 2-foot excavation at opening on east side of lab building.

TABLE 1
POST-EXCAVATION SAMPLING AND TOTAL PCBs RESULTS SUMMARY
COLONIAL LACQUER & CHEMICAL CO. SITE
ASHLAND, MASSACHUSETTS

Sample Location No.	Scribe Sample No.	Date	Time	Corresponding PA/SI or Removal Action Sample No.	Total PCBs (mg/Kg)			Sample Location/Description
					NERL ¹	ERRS ²	CLP ³	
RS31	01LK-0034	10/23/2015	1218	NobisSS14	4.9	---	---	From 2-foot excavation east of lab building.
RS32	01LK-0035	10/23/2015	1220	NobisSS10/20	0.19	---	---	From 2-foot excavation in middle of opening on east side of lab building.
RS33	01LK-0037	10/28/2015	1100	N/A	0.33	---	---	From soil pile behind (east) of office trailer at 0-3 inch depth.
RS34	01-LK-0038	10/30/2015	0745	N/A	1.63	---	---	3-point composite from 2-and 3-foot excavation south of manufacturing building where building debris not evident, collected for Full Suite Analysis ⁵ .
RS35	01LK-0039	10/30/2015	805	SS-202/RS29	0.37	---	---	Resample center of 3-foot excavation after further excavation.
RS36	01LK-0042	11/2/2015	1425	SS-103	ND	---	---	From 3-foot excavation north of lab building.
RS37	01LK-0043	11/2/2015	1430	SS-209	ND	---	---	From 3-foot excavation north of lab building.
RS38	01LK-0044	11/2/2015	1435	SS-14/27	ND	---	---	From 1-foot excavation north of lab building.
RS39	01LK-0045	11/2/2015	1440	SS-15	0.21	---	---	From 1-foot excavation north of lab building.
RS40	01LK-0046	11/2/2015	1450	SS-208	ND	---	---	From 1-foot excavation north of lab building.
RS41	01LK-0047	11/2/2015	1455	SS-18	0.11	---	---	From 1-foot excavation northwest of lab building.
RS42	01LK-0048	11/2/2015	1500	SS-307	ND	---	---	From 2-foot excavation northwest of lab building.
RS43	01LK-0049	11/2/2015	1505	SS-308	ND	---	---	From 2-foot excavation northwest of lab building.
RS44	01LK-0050	11/2/2015	1510	N/A	ND	---	---	From 2-foot excavation west of lab building between RS43 and RS45.

TABLE 1
POST-EXCAVATION SAMPLING AND TOTAL PCBs RESULTS SUMMARY
COLONIAL LACQUER & CHEMICAL CO. SITE
ASHLAND, MASSACHUSETTS

Sample Location No.	Scribe Sample No.	Date	Time	Corresponding PA/SI or Removal Action Sample No.	Total PCBs (mg/Kg)			Sample Location/Description
					NERL ¹	ERRS ²	CLP ³	
RS45	01LK-0051	11/2/2015	1515	SS-108	0.26	---	---	From 2-foot excavation west of lab building.
RS46	01LK-0052	11/2/2015	1440	SS-15	0.11	---	---	From 1-foot excavation north of lab building, duplicate of RS39.
RS47	01LK-0054	11/3/2015	1100	RS12 and SS-08	0.36	---	---	Resample north of manufacturing building at 2.5 feet after further excavation.
RS48	01LK-0056	11/3/2015	1107	RS26	2.07	---	---	Resample west of manufacturing building at 2 feet after further excavation.
RS49	01LK-0055	11/3/2015	1105	RS10 and SS-09	ND	---	---	Resample north of manufacturing building at 2.5 feet after further excavation.
RS50	01LK-0053	11/3/2015	1115	N/A	N/A	---	---	3-point composite from 2- and 3-foot excavation north & west of manufacturing building, collected for Full Suite Analysis.
RS51	01LK-0060	11/3/2015	1300	RS30 and SS-105	0.98	---	---	Resample east of lab building at 3 feet after further excavation.
RS52	01LK-0059	11/3/2015	1255	RS31 and NobisSS14	4.9	---	---	Resample east of lab building at 3 feet after further excavation.
RS53	01LK-0061	11/10/2015	845	N/A	ND	---	---	3-point composite from 1-, 2-, and 3-foot excavation north and west of lab building, collected for Full Suite Analysis.
RS54	01LK-0062	11/12/2015	1005	N/A	ND	---	---	Under northeast end of former location of Toxic substances control Act (TSCA) drum carcass pile at 0 to 3 inches.
---	01LK-0063	---	---	---	---	---	---	No sample with this number.
RS55	01LK-0064	11/12/2015	1010	N/A	0.33	---	---	Under southwest end of former location of TSCA drum carcass pile at 0 to 3 inches.
RS56	01LK-0065	11/12/2015	1040	N/A	2.0	---	---	Under former location of non-hazardous drum carcass pile.
RS57	01LK-0066	11/12/2015	1030	N/A	ND	---	---	Under eastern end of former location of hazardous (lead) drum carcass pile at 0 to 3 inches.
RS58	01LK-0067	11/12/2015	1025	N/A	ND	---	---	Under western end of former location of hazardous (lead) drum carcass pile at 0 to 3 inches.

TABLE 1
POST-EXCAVATION SAMPLING AND TOTAL PCBs RESULTS SUMMARY
COLONIAL LACQUER & CHEMICAL CO. SITE
ASHLAND, MASSACHUSETTS

Sample Location No.	Scribe Sample No.	Date	Time	Corresponding PA/SI or Removal Action Sample No.	Total PCBs (mg/Kg)			Sample Location/Description
					NERL ¹	ERRS ²	CLP ³	
RS59	01LK-0068	11/12/2015	1020	SS-06 and RS15	0.10	---	---	Resample south of manufacturing building at 3 feet after further excavation.
RS60	01LK-0069	11/12/2015	1410	RS26/48	1.09	---	---	Resample between manufacturing and office buildings at 3 feet after further excavation.
RS61	01LK-0070	11/17/2015	1240	SS-101	2.09	2.17	---	From 2-foot excavation south of manufacturing building.
RS62	01LK-0072	11/17/2015	1235	SS-204/211	2	1.01	---	From 2-foot excavation south of manufacturing building.
RS63	01LK-0071	11/17/2015	1255	SS-300	11	9.49	---	From 3-foot excavation south of manufacturing building.
RS64	01LK-0073	11/17/2015	1305	SS-100	ND	2.44	---	From 3-foot excavation south of manufacturing building.
RS65	01LK-0074	11/17/2015	1325	SS-402	0.36	0.38	---	From 2.5-foot excavation north of manufacturing building.
RS66	01LK-0075	11/20/2015	1425	SS-300/RS63	---	---	0.57	From 3 feet south of SS-300/RS63 at 1-foot excavation depth.
RS67	01LK-0076	11/20/2015	1428	SS-300/RS63	---	---	0.58	From 3 feet south of SS-300/RS63 at 2-foot excavation depth.
RS68	01LK-0077	11/20/2015	1434	SS-300/RS63	---	---	ND	From 3 feet south of SS-300/RS63 at 3-foot excavation depth.
RS69	01LK-0078	11/20/2015	1440	SS-300/RS63	---	---	4.30	From 3 feet south of SS-300/RS63 at 4.5-foot excavation depth.
RS70	01LK-0079	11/20/2015	1355	N/A	12.10	---	---	3-point composite from 3-foot excavation south of manufacturing building where building debris is visible, collected for Full Suite Analysis.
---	01LK-0080	---	---	---	---	---	---	No sample with this number.
RS71	01LK-0081	11/20/2015	1405	near RS56	---	---	2.80	Northeast of former location of non-hazardous drum carcass pile at 0 to 3 inch depth.

TABLE 1
POST-EXCAVATION SAMPLING AND TOTAL PCBs RESULTS SUMMARY
COLONIAL LACQUER & CHEMICAL CO. SITE
ASHLAND, MASSACHUSETTS

Sample Location No.	Scribe Sample No.	Date	Time	Corresponding PA/SI or Removal Action Sample No.	Total PCBs (mg/Kg)			Sample Location/Description
					NERL ¹	ERRS ²	CLP ³	
RS72	01LK-0082	11/20/2015	1408	near RS56	---	---	0.15	North of former location of non-hazardous drum carcass pile at 0 to 3 inch depth.
RS73	01LK-0083	11/20/2015	1413	near RS56	---	---	0.91	East of former location of non-hazardous drum carcass pile at 0 to 3 inch depth.
RS74	01LK-0084	11/20/2015	1458	RS56	---	---	---	Under former non-hazardous drum carcass pile at 6-inch depth after excavation. NOTE: SAMPLE NOT ANALYZED, REPLACED BY RS75 AND RS76.
RS75	01LK-0085	11/23/2015	1315	RS56	---	---	0.33	Under former non-hazardous drum carcass pile at 6-inch depth after excavation.
RS76	01LK-0086	11/23/2015	1315	RS56	---	---	0.14	Under former location of non-hazardous drum carcass pile at 6-inch depth after excavation - duplicate of RS75.
RS77	01LK-0087			NA	---	---	---	Performance Evaluation sample per EPA's Contract Lab Program's protocol and/or Regional guidance. Not a sample collected from the site.
RS78	01LK-0088	12/2/2015	08:22	RS62	---	---	5.5	Resample SS-204/211 at 3 feet after further excavation.
RS79	01LK-0089	12/2/2015	08:30	RS61	---	---	0.25	Resample SS-101 at 3 feet after further excavation.
RS80	01LK-0090	12/3/2015	15:10	RS71	---	---	ND	Resample RS71 after additional 6-inch excavation.

¹ EPA's New England Regional Laboratory, North Chelmsford, MA.

² EPA's Emergency and Rapid Response Services contractor's subcontracted lab, Pace Analytical, Melville, NY.

³ EPA's Contract Lab Program laboratory, Spectrum Analytical, North Kingston, RI.

⁴ RS = Removal Sample - sample collected during EPA's Removal Action.

⁵ Full Suite Analysis = Volatile Organics, Semivolatile organics, RCRA 8 metals, Pesticides/PCBs, Cyanide.

All results are in milligrams per Kilogram (mg/Kg)

N/A = Not Applicable

ND = Not Detected

PCBs = Polychlorinated Biphenyls

PA/SI = Preliminary Assessment/Site Investigation

**TABLE 2
SUMMARY OF BACKFILL SAMPLE ANALYTICAL RESULTS
COLONIAL LACQUER & CHEMICAL CO. SITE, ASHLAND MASSACHUSETTS**

Sample Number	Date Collected	Time	Total PCBs	Arsenic	Lead	Barium	Cadmium	Chromium	Selenium	Silver	Mercury	Sample Location/Description
MCP S-1/GW-3 Standard (ppm)			1	20	200	1,000	70	100	400	100	20	Sample Location/Description
Backfill from source***	10/13/2015	13:10	ND	ND*	31*	410*	ND*	ND*	ND*	ND*	ND*	Grab sample from source before delivery to the site.
BF1	10/30/2015	08:17	ND	7.6	5.2	24.4	<0.6	28.3	0.3	<1.1	<0.4	Grab sample from load delivered to the site prior to handling.
BF2	10/30/2015	08:20	ND	7.5	5.2	25.9	<0.5	45.9	0.0	<1.0	<0.4	Grab sample from load delivered to the site prior to handling.
BF3	10/30/2015	14:55	ND	6.4	5.0	26.3	<0.5	29.6	0.2	<1.0	<0.4	Grab sample from load delivered to the site prior to handling.
BF4	10/30/2015	14:57	ND	7.6	5.1	23.3	<0.5	37.4	0.0	<1.1	<0.4	Grab sample from load delivered to the site prior to handling.
BF5	11/2/2015	08:15	ND	7.6	5.1	24.7	<0.5	32.2	0.0	<1.0	<0.4	Grab sample from load delivered to the site prior to handling.
BF6	11/2/2015	08:15	ND	7.4	4.5	24.6	<0.5	34.4	0.0	<1.0	<0.4	Grab sample from load delivered to the site prior to handling.
BF7	11/3/2015	13:45	ND	9.2	5.1	57.8	<0.5	89.1	1.5	1.2	<0.4	Grab sample from load delivered to the site prior to handling.
BF8	11/10/2015	12:50	ND	11.8	5.3	28.6	0.1	41.4	0.9	0.9	0.0013	Grab sample from load delivered to the site prior to handling.
BF9	11/10/2015	13:00	ND	6.5	4.7	27.2	0.1	36.5	0.6	0.9	<0.4	Grab sample from load delivered to the site prior to handling.
BF10	11/17/2015	10:30	0.0585	7.6	4.9	26.1	<.05	35.5	1.8	0.7	<0.4	Grab sample from load delivered to the site prior to handling.
BF11**	11/24/2015	13:45	ND	8.0	4.3	27.0	0.0	38.5	0.5	0.1	0.0120	Grab sample from load delivered to the site prior to handling.
BF12**	11/30/2015	11:15	ND	8.2	4.2	26.8	0.0	28.7	2.8	0.1	0.0100	Grab sample from load delivered to the site prior to handling.
BF13**	12/1/2015	14:15	ND	7.6	5.1	27.1	0.0	33.9	0.7	0.1	0.0120	Grab sample from load delivered to the site prior to handling.
BF14/BF14 duplicate**	12/3/2015	13:30	ND	5.6/6.2	4.8/4.8	36.9/27.5	0.41/0.42	45.5/48.7	1.5/1.2	0.83/0.83	0.007/0.007	Grab sample from load delivered to the site prior to handling.
BF15**	12/3/2015	14:40	ND	6.7	4.7	30.9	0.5	41.1	2.4	0.0	0.0058	Grab sample from load delivered to the site prior to handling.
BF16**	12/4/2015	08:00	ND	5.4	4.4	35.6	0.4	52.5	1.2	0.8	0.0035	Grab sample from load delivered to the site prior to handling.

All data generated by EPA's Emergency and Rapid Response Contractor's Laboratory (PACE Analytical, Melville, NY) unless otherwise noted.

All analytical results are reported in parts per million (ppm).

* Data generated by EPA's New England Regional Laboratory (North Chelmsford, MA).

** Data generated by EPA's Contract Lab Program (Spectrum Analytical, North Kingstown, RI).

*** Analyses included, but not summarized here: volatile organics, semivolatile organics, pesticides, total organic carbon, and total petroleum hydrocarbons.

PCBs - Polychlorinated Biphenyls

ppm = parts per million.

NA = Not Analyzed ND = Not Detected

MCP S-1/GW-3 = Massachusetts Contingency Plan Soil Category S-1/Groundwater Category GW-3

**TABLE 3
SUMMARY OF PRE- AND POST-EXCAVATION TOTAL PCB SAMPLE RESULTS
COLONIAL LACQUER & CHEMICAL CO. SITE
ASHLAND, MASSACHUSETTS**

PA/SI Sample Location No.	Pre-Excavation/Site Investigation Results			Initial Excavation Results			Final Excavation Results		
	Total PCBs at Surface	Total PCBs at 1 foot	Total PCBs at 2 feet	Corresponding Post-Excavation Sample Location No.	Sample Depth (feet)	Total PCBs	Sample Location No.	Depth (feet)	Total PCBs
SS-01	ND	----	----						
SS-02	ND	----	----						
SS-03	0.42	----	----						
SS-04	2.09	----	----	RS02	2	ND			
SS-05	ND	----	----						
SS-06	0.59	----	----	RS15	2	4.15	RS59	3	0.10
SS-07	10.80 †	----	----	RS14	2	ND			
SS-08	1.37	ND	----	RS12	2	1.1	RS47	2.5	0.36
SS-09	4.40	1.10	----	RS10/RS11*	2	1.64/0.83	RS49	2.5	ND
SS-10	0.13	----	----						
SS-11 *	ND	----	----						
SS-14/SS-27*	2.14/2.69	1.61	0.21	RS38	1	ND			
SS-15	3.14	0.24	----	RS39/RS46*	1	0.21/0.11			
SS-16	0.69	----	----						
SS-17/SS-28*	0.65/0.69	----	----						
SS-18	11.00 †	0.49	----	RS41	1	0.11			
SS-19	ND	----	----						
SS-20	ND	----	----						
SS-21	ND	----	----						
SS-22	0.11	----	----						
SS-23	0.37	----	----						
SS-24	ND	----	----						
SS-25	ND	----	----						
SS-26	ND	----	----						
SS-100	2.00	2.93	0.13	RS64	3	ND			
SS-101	ND	3.33	0.83	RS61	2	2.09	RS79	3	0.25
SS-102	0.2	0.19	----						
SS-103	13.4 †	2.63	2.31	RS36	3	ND			
SS-104	0.25	0.09	----	RS25	1	ND			
SS-105	3.03	1.1	ND	RS30	2	1.73	RS51	3	0.98
SS-106	0.52	0.77	----						
SS-107	0.22	----	----						
SS-108	0.96	0.18	----	RS45	2	0.26			
SS-110	8	1.2	0.19	RS17	2	ND			
SS-111	2.13	0.25	0.41	RS23	3	ND			
SS-112	0.13	----	----						
SS-113	ND	----	----						
SS-114/SS-414C**	1.17	10 †	ND	RS02	2	ND			
SS-115/SS-120*	ND/ND	----	----						
SS-200	ND	----	----						
SS-201	ND	----	----						
SS-202	1.8	3.9	1.2	RS29	2.5	0.87	RS35	3	0.37
SS-203	0.2	1.17	0.29	RS04	2	ND			
SS-204/SS-211*	0.69	0.75	0.83/0.54	RS62	2	2	RS78	3	5.5
SS-205	0.45	ND	0.25	RS13	2	ND			
SS-206/SS-210*	1.05	1.3/9.9	0.43	RS16	2	0.38			
SS-207	2.5	0.61	1.2	RS24	3	0.12			
SS-208	2.18	0.26	----	RS40	1	ND			
SS-209	3.1	ND	ND	RS37	3	ND			
SS-300/SS-303*	0.34	0.41	0.42	RS63	3	11	RS69	4.5	4.3

TABLE 3
SUMMARY OF PRE- AND POST-EXCAVATION TOTAL PCB SAMPLE RESULTS
COLONIAL LACQUER & CHEMICAL CO. SITE
ASHLAND, MASSACHUSETTS

PA/SI Sample Location No.	Pre-Excavation/Site Investigation Results			Initial Excavation Results			Final Excavation Results		
	Total PCBs at Surface	Total PCBs at 1 foot	Total PCBs at 2 feet	Corresponding Post-Excavation Sample Location No.	Sample Depth (feet)	Total PCBs	Sample Location No.	Depth (feet)	Total PCBs
SS-301	0.24	1.05	ND	RS03	3	ND			
SS-302	1.64	0.37	0.58	RS05	3	0.76			
SS-305	0.73	ND	ND	RS21/RS28*	2	0.27/0.33			
SS-306	0.43	ND	0.14	RS22	2	0.10			
SS-307	22 †	0.21	ND	RS42	2	ND			
SS-308	25.7 †	2.6	ND	RS43	2	ND			
SS-400	8.7	7.3	2.24	RS09	3	0.3			
SS-401	ND	ND	ND						
SS-402	8.5	2.85	1.09	RS65	2.5	0.36			
SS-403	ND	ND	0.17						
SS-404	4.5	0.14	ND	RS18	2	ND			
SS-405	0.49	0.51	0.5						
SS-406	0.21	0.11	0.82						
SS-407	2.7	9.7	2.65	RS27	3	0.4			
SS-408	0.75	0.79	0.43						
SS-409	0.82	ND	ND						
SS-410	0.38	0.62	-----						
SS-411	0.59	0.47	ND						
SS-412	0.64	ND	0.51						
SS-413	0.61	0.25	ND						

NOTES:

All results in milligrams per Kilogram (mg/Kg).

* = Duplicate Sample.

** Sample SS-414C was a depth sample (24 inches) collected from previous sample location SS-114.

Values **bolded** and shaded exceed the Massachusetts Contingency Plan (MCP) Soil Category S-1 standard of 1 mg/Kg.

Empty cells indicate area did not require excavation based on Preliminary Assessment/Site Investigation sample results.

ND = Not Detected.

----- = Preliminary Assessment/Site Investigation sample not collected.

† = Value exceeded MCP Imminent Hazard (IH) value of 10 mg/Kg

TABLE 4

**SUMMARY OF POST-EXCAVATION METALS SAMPLE RESULTS
COLONIAL LACQUER & CHEMICAL CO. SITE
ASHLAND, MASSACHUSETTS**

SAMPLE LOCATION NO. SCRIBE SAMPLE NO. LABORATORY SAMPLE NO.		RS01 01LK-0001 AB58850	RS02 01LK-0002 AB58851	RS03 01LK-0003 AB58852	RS04 01LK-0004 AB58853	RS05 01LK-0005 AB58854	RS06 01LK-0006 AB59030	RS07 01LK-0007 AB59031	RS08 01LK-0008 AB59032
PARAMETER	MCP S-1								
Aluminum*	N/A	12,000	6,600	6,800	3,300	9,600	15,000	15,000	18,000
Antimony	20	ND	ND	ND	ND	ND	ND	ND	ND
Arsenic	20	5.0	ND	3.2	2.6	3.1	11	9.9	7.7
Barium	1,000	50	22	23	26	54	35	35	26
Cadmium	70	ND	ND	ND	ND	ND	ND	2.0	ND
Calcium	NL	1,800	740	1,000	830	2,300	1,200	1,700	820
Chromium	100	22	11 J3	14	5.3	23	28	26	21
Cobalt*	N/A	2.5	4.2	4.5	2.8	9.2	6.4	4.6	3.7
Copper*	N/A	9.5	8.9	11	9.0	62	25	18	16
Iron*	N/A	12,000	9,200	11,000	7,500	17,000	18,000	16,000	19,000
Lead	200	47	5.4	6.8	2.9	25	86	62	26
Magnesium	NL	1,300	2,300	2,400	1,500	4,500	2,800	2,600	2,100
Manganese*	N/A	81	250	190	140	230	170	170	110
Nickel	600	7.1	10	11	4.0	16	17	14	12
Selenium	400	ND	ND	ND	ND	ND	ND	ND	ND
Vanadium	400	21	12	15	9.8	32	36	32	34
Zinc	1,000	310	26	24	19	54	190	1,100	40

NOTES:

ND= Not Detected.

NL = Not Listed.

N/A = Not Applicable.

J/J3= Estimated Value.

---- = Not analyzed.

All results in Milligrams per Kilogram (mg/Kg).

D = Compound identified in an analysis at a secondary dilution factor.

A compound is listed in the table above only if it was detected in at least one of the samples analyzed. Compounds that were analyzed for, but not detected, have been omitted.

MCP S-1 = Massachusetts Contingency Plan Soil Category S-1 standard (for residential soil).

* = There is no MCP S-1 standard for this element.

Values bolded and shaded exceed the MCP S-1 standard.

Samples analyzed by U.S. EPA Office of Environmental Measurement and Evaluation (OEME) using EPA Region I SOP, EIASOP-INGICP6, Metals in Soil Medium Level by ICP.

[CLP] = Samples were analyzed by a Contract Program Laboratory facility.

TABLE 4

SUMMARY OF POST-EXCAVATION METALS SAMPLE RESULTS
 COLONIAL LACQUER & CHEMICAL CO. SITE
 ASHLAND, MASSACHUSETTS

SAMPLE LOCATION NO. SCRIBE SAMPLE NO. LABORATORY SAMPLE NO.		RS09 01LK-0009 AB59033	RS10 01LK-0010 AB59034	RS11 01LK-0011 AB59035	RS12 01LK-0012 AB59036	RS13 01LK-0013 AB59037	RS14 01LK-0014 AB59038	RS15 01LK-0015 AB59039	RS16 01LK-0016 AB59040
PARAMETER	MCP S-1								
Aluminum*	N/A	16,000	17,000	19,000	15,000	10,000	3,800	6,800	11,000
Antimony	20	ND	ND	ND	ND	ND	ND	ND	ND
Arsenic	20	11	7.8	8.8	13	3.9	2.6	3.8	13
Barium	1,000	25	27	28	25	27	21	29	35
Cadmium	70	ND	ND	ND	ND	ND	ND	ND	ND
Calcium	NL	920	810	800	740	830	1,500	3,700	1,800
Chromium	100	29	29	31	23	17	10	15	18
Cobalt*	N/A	8.3	5.0	6.1	5.7	4.0	3.9	4.8	3.3
Copper*	N/A	19	16	17	12	12	12	34	52
Iron*	N/A	20,000	17,000	20,000	16,000	12,000	7,400	10,000	12,000
Lead	200	22	28	29	45	18	6.5	77	78
Magnesium	NL	3,100	3,000	3,100	2,400	2,400	1,800	2,500	1,900
Manganese*	N/A	130	150	160	140	180	96	150	200
Nickel	600	17	15	15	12	11	7.0	8.7	11
Selenium	400	ND	ND	ND	ND	ND	ND	ND	ND
Vanadium	400	36	34	37	29	20	12	17	22
Zinc	1,000	85	190	190	50	29	16	63	110

NOTES:

ND= Not Detected.
 NL = Not Listed.
 N/A = Not Applicable.
 J/J3= Estimated Value.
 ---- = Not analyzed.
 All results in Milligrams per
 Kilogram (mg/Kg).
 D = Compound identified in an
 analysis at a secondary dilution
 factor.

A compound is listed in the table above only if it was detected in at least one of the samples analyzed. Compounds that were analyzed for, but not detected, have been omitted.

MCP S-1 = Massachusetts Contingency Plan Soil Category S-1 standard (for residential soil).

* = There is no MCP S-1 standard for this element.

Values bolded and shaded exceed the MCP S-1 standard.

Samples analyzed by U.S. EPA Office of Environmental Measurement and Evaluation (OEME) using EPA Region I SOP, EIASOP-INGICP6, Metals in Soil Medium Level by ICP.

[CLP] = Samples were analyzed by a Contract Program Laboratory facility.

TABLE 4

**SUMMARY OF POST-EXCAVATION METALS SAMPLE RESULTS
COLONIAL LACQUER & CHEMICAL CO. SITE
ASHLAND, MASSACHUSETTS**

SAMPLE LOCATION NO. SCRIBE SAMPLE NO. LABORATORY SAMPLE NO.		RS17 01LK-0017 AB59041	RS18 01LK-0018 AB59042	RS19 01LK-0019 AB59191	RS20 01LK-0020 AB59192	RS21 01LK-0021 AB59193	RS22 01LK-0022 AB59194	RS23 01LK-0023 AB59195	RS24 01LK-0024 AB59196
PARAMETER	MCP S-1								
Aluminum*	N/A	21,000	21,000	11,000	13,000	16,000	20,000	8,900	6,100
Antimony	20	ND	ND	ND	ND	ND	ND	ND	ND
Arsenic	20	9.2	6.8	8.6	5.6	6.7	8.5	5.8	3.5
Barium	1,000	34	23	33	26	25	39	16	35
Cadmium	70	ND	ND	ND	ND	ND	ND	ND	ND
Calcium	NL	960	620	2,300	1,200 J3	690	990	710	1,500
Chromium	100	32	25	16	18	21	26	19	12
Cobalt*	N/A	7.7	5.3	2.9	3.2	4.3	6.9	4.7	4.8
Copper*	N/A	23	15	13	14	12	19	30	14
Iron*	N/A	23,000	20,000	13,000	14,000	16,000	20,000	15,000	9,800
Lead	200	17	20	54	54	20	47	7.5	7.9
Magnesium	NL	4,400	2,600	1,800	1,900	2,500	3,500	3,200	2,400
Manganese*	N/A	170	110	240	210	120	160	120	150
Nickel	600	20	14	10	10	12	17	12	9.1
Selenium	400	ND	ND	ND	ND	ND	ND	ND	ND
Vanadium	400	44	37	25	28	30	37	23	16
Zinc	1,000	75	35	83	73	52	140	25	52

NOTES:

ND= Not Detected.

NL = Not Listed.

N/A = Not Applicable.

J/J3= Estimated Value.

---- = Not analyzed.

All results in Milligrams per
Kilogram (mg/Kg).D = Compound identified in an
analysis at a secondary dilution
factor.**A compound is listed in the table above only if it was detected in at least one of the samples analyzed. Compounds that were analyzed for, but not detected, have been omitted.**

MCP S-1 = Massachusetts Contingency Plan Soil Category S-1 standard (for residential soil).

* = There is no MCP S-1 standard for this element.

Values bolded and shaded exceed the MCP S-1 standard.Samples analyzed by U.S. EPA Office of Environmental Measurement and Evaluation (OEME) using EPA Region I SOP,
EIASOP-INGICP6, Metals in Soil Medium Level by ICP.

[CLP] = Samples were analyzed by a Contract Program Laboratory facility.

TABLE 4

**SUMMARY OF POST-EXCAVATION METALS SAMPLE RESULTS
COLONIAL LACQUER & CHEMICAL CO. SITE
ASHLAND, MASSACHUSETTS**

SAMPLE LOCATION NO. SCRIBE SAMPLE NO. LABORATORY SAMPLE NO.		RS25 01LK-0025 AB59197	RS26 01LK-0026 AB59198	RS27 01LK-0027 AB59199	RS28 01LK-0028 AB59200	RS29 01LK-0032 AB59201	RS30 01LK-0033 AB59202	RS31 01LK-0034 AB59203	RS32 01LK-0035 AB59204
PARAMETER	MCP S-1								
Aluminum*	N/A	18,000	12,000	16,000	17,000	8,500	11,000	15,000	11,000
Antimony	20	ND	ND	ND	ND	ND	ND	ND	ND
Arsenic	20	5.4	6.8	6.0	7.0	3.3	5.3	4.9	4.9
Barium	1,000	17	29	43	26	39	47	60	39
Cadmium	70	ND	ND	ND	ND	ND	ND	ND	ND
Calcium	NL	520	870	1,200	770	1,600	1,300	1,300	810
Chromium	100	25	25	28	22	24	29	26	27
Cobalt*	N/A	3.7	9.0	8.0	6.0	5.7	6.3	6.5	4.3
Copper*	N/A	13	29	420	13	20	44	58	19
Iron*	N/A	17,000	15,000	18,000	17,000	13,000	15,000	17,000	12,000
Lead	200	25	42	23	19	21	100	32	91
Magnesium	NL	1,900	3,500	4,600	2,600	3,300	2,800	4,200	2,300
Manganese*	N/A	89	180	210	120	230	180	180	110
Nickel	600	13	14	19	13	17	14	21	11
Selenium	400	ND	ND	ND	ND	ND	ND	ND	ND
Vanadium	400	30	26	34	31	19	24	29	20
Zinc	1,000	36	42	68	55	49	140	110	72

NOTES:

ND= Not Detected.

NL = Not Listed.

N/A = Not Applicable.

J/J3= Estimated Value.

---- = Not analyzed.

All results in Milligrams per
Kilogram (mg/Kg).D = Compound identified in an
analysis at a secondary dilution
factor.**A compound is listed in the table above only if it was detected in at least one of the samples analyzed. Compounds that were analyzed for, but not detected, have been omitted.**

MCP S-1 = Massachusetts Contingency Plan Soil Category S-1 standard (for residential soil).

* = There is no MCP S-1 standard for this element.

Values bolded and shaded exceed the MCP S-1 standard.

Samples analyzed by U.S. EPA Office of Environmental Measurement and Evaluation (OEME) using EPA Region I SOP, EIASOP-INGICP6, Metals in Soil Medium Level by ICP.

[CLP] = Samples were analyzed by a Contract Program Laboratory facility.

TABLE 4

**SUMMARY OF POST-EXCAVATION METALS SAMPLE RESULTS
COLONIAL LACQUER & CHEMICAL CO. SITE
ASHLAND, MASSACHUSETTS**

SAMPLE LOCATION NO. SCRIBE SAMPLE NO. LABORATORY SAMPLE NO.		RS33 01LK-0037 AB59315	RS36 01LK-0042 AB59320	RS37 01LK-0043 AB59321	RS38 01LK-0044 AB59322	RS39 01LK-0045 AB59323	RS40 01LK-0046 AB59324	RS41 01LK-0047 AB59325	RS42 01LK-0048 AB59326
PARAMETER	MCP S-1								
Aluminum*	N/A	12,000	19,000	19,000	14,000	13,000	13,000	7,000	11,000
Antimony	20	ND	ND	ND	ND	ND	ND	ND	ND
Arsenic	20	4.6	6.1	6.9	12	9.2	4.4	3.0	6.5
Barium	1,000	23	47	37	23	24	21	21	18
Cadmium	70	ND	ND	ND	ND	ND	ND	ND	ND
Calcium	NL	320	1,800	1,800	460	890	650	1,200	870
Chromium	100	13	42	34	15	17	17	20	32
Cobalt*	N/A	2.9	17	15	3.3	3.2	3.9	5.4	4.7
Copper*	N/A	8.3	50	35	10	12	8.7	13	12
Iron*	N/A	14,000	23,000	24,000	14,000	15,000	15,000	11,000	15,000
Lead	200	21	6.0	6.8	50	39	11	4.9	7.3
Magnesium	NL	1,500	7,400	6,000	1,700	1,600	1,600	2,600	2,600
Manganese*	N/A	93	400	240	120	110	110	170	110
Nickel	600	8.1	38	27	9.5	9.9	10	17	19
Selenium	400	ND	ND	ND	ND	ND	ND	ND	ND
Vanadium	400	23	44	45	23	24	27	17	26
Zinc	1,000	32	44	36	27	28	28	24	28

NOTES:

ND= Not Detected.

NL = Not Listed.

N/A = Not Applicable.

J/J3= Estimated Value.

---- = Not analyzed.

All results in Milligrams per
Kilogram (mg/Kg).D = Compound identified in an
analysis at a secondary dilution
factor.**A compound is listed in the table above only if it was detected in at least one of the samples analyzed. Compounds that were analyzed for, but not detected, have been omitted.**

MCP S-1 = Massachusetts Contingency Plan Soil Category S-1 standard (for residential soil).

* = There is no MCP S-1 standard for this element.

Values bolded and shaded exceed the MCP S-1 standard.Samples analyzed by U.S. EPA Office of Environmental Measurement and Evaluation (OEME) using EPA Region I SOP,
EIASOP-INGICP6, Metals in Soil Medium Level by ICP.

[CLP] = Samples were analyzed by a Contract Program Laboratory facility.

TABLE 4

SUMMARY OF POST-EXCAVATION METALS SAMPLE RESULTS
 COLONIAL LACQUER & CHEMICAL CO. SITE
 ASHLAND, MASSACHUSETTS

SAMPLE LOCATION NO. SCRIBE SAMPLE NO. LABORATORY SAMPLE NO.		RS43 01LK-0049 AB59327	RS44 01LK-0050 AB59328	RS45 01LK-0051 AB59329	RS46 01LK-0052 AB59330	RS54 01LK-0062 AB59755	RS55 01LK-0064 AB59756	RS56 01LK-0065 AB59757	RS57 01LK-0066 AB59758
PARAMETER	MCP S-1								
Aluminum*	N/A	11,000	14,000	7,600	14,000	6,400	5,900	6,900	9,700
Antimony	20	ND	ND	ND	ND	ND	ND	ND	ND
Arsenic	20	3.9	4.6	3.5	9.3	5.2	5.2 J3	3.7	4.9
Barium	1,000	17	22	14	26	100	31	37	71
Cadmium	70	ND	ND	ND	ND	ND	ND	ND	ND
Calcium	NL	330	410	730	1,100	960	1,200	1,400	3,000
Chromium	100	12	14	10	18	22	21	26	23
Cobalt*	N/A	3.2	3.8	3.4	3.4	3.9	3.7	4.7	9.8
Copper*	N/A	10	13	10	12	330	37	30	68
Iron*	N/A	9,500	11,000	8,000	14,000	9,500	11,000	14,000	19,000
Lead	200	5.1	5.2	6.2	39	150	75	120	4.6
Magnesium	NL	1,500	1,800	1,500	1,700	1,900	2,200	2,200	7,000
Manganese*	N/A	66	80	65	110	120	210	160	220
Nickel	600	8.7	11	7.9	11	7.1	8.6	8.8	18
Selenium	400	ND	ND	ND	ND	ND	ND	ND	ND
Vanadium	400	16	20	14	25	14	32 J3	16	34
Zinc	1,000	30	30	21	29	350	65	130	37

NOTES:

ND= Not Detected.

NL = Not Listed.

N/A = Not Applicable.

J/J3= Estimated Value.

---- = Not analyzed.

All results in Milligrams per Kilogram (mg/Kg).

D = Compound identified in an analysis at a secondary dilution factor.

A compound is listed in the table above only if it was detected in at least one of the samples analyzed. Compounds that were analyzed for, but not detected, have been omitted.

MCP S-1 = Massachusetts Contingency Plan Soil Category S-1 standard (for residential soil).

* = There is no MCP S-1 standard for this element. The EPA Regional Removal Management Level (RML) residential soil **Values bolded and shaded exceed the MCP S-1 standard.**

Samples analyzed by U.S. EPA Office of Environmental Measurement and Evaluation (OEME) using EPA Region I SOP, EIASOP-INGICP6, Metals in Soil Medium Level by ICP.

[CLP] = Samples were analyzed by a Contract Program Laboratory facility.

TABLE 4

**SUMMARY OF POST-EXCAVATION METALS SAMPLE RESULTS
COLONIAL LACQUER & CHEMICAL CO. SITE
ASHLAND, MASSACHUSETTS**

SAMPLE LOCATION NO. SCRIBE SAMPLE NO. LABORATORY SAMPLE NO.		RS58 01LK-0067 AB59759	RS59 01LK-0068 AB59760	RS60 01LK-0069 AB59761	RS61 01LK-0070 AB59991	RS62 01LK-0071 AB59993	RS63 01LK-0072 AB59992	RS64 01LK-0073 AB59994	RS65 01LK-0074 AB59995
PARAMETER	MCP S-1								
Aluminum*	N/A	11,000	6,300	9,100	10,000	9,100	12,000	15,000	22,000
Antimony	20	ND	ND	ND	ND	ND	4.3 J3	ND	ND
Arsenic	20	4.1	3.9	3.4	4.1	3.3	7.6	3.9	9.5
Barium	1,000	74	25	32	32	42	68	24	28
Cadmium	70	ND	ND	ND	ND	ND	ND	ND	ND
Calcium	NL	2,700	1,400	970	1,400	1,300	4,600	810	730
Chromium	100	24	10	19	31	28	230	24	30
Cobalt*	N/A	8.6	4.0	6.3	6.2	6.4	8.3	5.6	7.9
Copper*	N/A	44	14	21	25	29	140	10	22
Iron*	N/A	19,000	9,000	13,000	13,000	12,000	18,000	15,000	21,000
Lead	200	21	12	13	12	50	810	7.4	20
Magnesium	NL	7,500	1,900	3,300	3,600	3,900	4,700	3,300	3,800
Manganese*	N/A	240	130	210	150	210	210	180	140
Nickel	600	15	7.0	15	19	20	24	14	19
Selenium	400	ND	ND	ND	ND	ND	ND	ND	ND
Vanadium	400	33	14	21	24	20	29	28	40
Zinc	1,000	57	27	40	38	66	570	43	74

NOTES:

ND= Not Detected.

NL = Not Listed.

N/A = Not Applicable.

J/J3= Estimated Value.

---- = Not analyzed.

All results in Milligrams per
Kilogram (mg/Kg).D = Compound identified in an
analysis at a secondary dilution
factor.**A compound is listed in the table above only if it was detected in at least one of the samples analyzed. Compounds that were analyzed for, but not detected, have been omitted.**

MCP S-1 = Massachusetts Contingency Plan Soil Category S-1 standard (for residential soil).

* = There is no MCP S-1 standard for this element.

Values bolded and shaded exceed the MCP S-1 standard.Samples analyzed by U.S. EPA Office of Environmental Measurement and Evaluation (OEME) using EPA Region I SOP,
EIASOP-INGICP6, Metals in Soil Medium Level by ICP.

[CLP] = Samples were analyzed by a Contract Program Laboratory facility.

TABLE 4

SUMMARY OF POST-EXCAVATION METALS SAMPLE RESULTS
 COLONIAL LACQUER & CHEMICAL CO. SITE
 ASHLAND, MASSACHUSETTS

SAMPLE LOCATION NO. SCRIBE SAMPLE NO. LABORATORY SAMPLE NO.		RS71 01LK-0081 AB60113	RS72 01LK-0082 AB60114	RS73 01LK-0083 AB60115	RS74 01LK-0084 AB60116	RS78 01LK-0088 MA40S1 [CLP]	RS79 01LK-0089 MA40S2 [CLP]
PARAMETER	MCP S-1						
Aluminum*	N/A	6,700	6,500	7,000	7,300	----	----
Antimony	20	ND	ND	ND	ND	----	----
Arsenic	20	5.0	3.4	3.7	4.6	6	3.2
Barium	1,000	77	39	29	33	110	41.1
Cadmium	70	ND	ND	ND	ND	0.32	0.026 J
Calcium	NL	1,200	2,000	1,100	1,300	----	----
Chromium	100	39	26	18	24	1.36	35
Cobalt*	N/A	6.5	5.1	4.2	5.0	----	----
Copper*	N/A	260	33	24	30	----	----
Iron*	N/A	20,000	13,000	13,000	19,000	----	----
Lead	200	230	85	42	68	641 D	5.4
Magnesium	NL	2,100	2,600	2,000	2,100	----	----
Manganese*	N/A	190	190	130	170	----	----
Nickel	600	13	11	8.2	9.4	----	----
Selenium	400	ND	ND	ND	ND	2.5 J	2.6
Vanadium	400	24	19	14	15	----	----
Zinc	1,000	130	130	110	130	----	----

NOTES:

ND= Not Detected.
 NL = Not Listed.
 N/A = Not Applicable.
 J/J3= Estimated Value.
 ---- = Not analyzed.
 All results in Milligrams per
 Kilogram (mg/Kg).
 D = Compound identified in an
 analysis at a secondary dilution
 factor.

**A compound is listed in the table above only if it was detected in at least one of the samples analyzed.
 Compounds that were analyzed for, but not detected, have been omitted.**

MCP S-1 = Massachusetts Contingency Plan Soil Category S-1 standard (for residential soil).
 * = There is no MCP S-1 standard for this element.

Values bolded and shaded exceed the MCP S-1 standard.

Samples analyzed by U.S. EPA Office of Environmental Measurement and Evaluation (OEME) using EPA
 Region I SOP, EIASOP-INGICP6, Metals in Soil Medium Level by ICP.

[CLP] = Samples were analyzed by a Contract Program Laboratory facility.

**TABLE 5
SUMMARY OF COMPOSITE SAMPLE ANALYTICAL RESULTS
COLONIAL LACQUER & CHEMICAL CO. SITE
ASHLAND, MASSACHUSETTS**

SCRIBE SAMPLE NUMBER: SAMPLE LOCATION NUMBER: LABORATORY SAMPLE NUMBER:		01LK-0038 RS34 (2 to 3 Feet) AB59316	01LK-0053 RS50 (2 to 3 Feet) AB59372	01LK-0061 RS53 (1 to 3 Feet) AB59723	01LK-0079 RS70 (3 Feet) AB60112
COMPOUND	MCP S-1				
VOLATILE ORGANIC COMPOUNDS (VOCs)		µg/Kg			
2-Propanone (acetone)	6,000	280	ND	ND	ND
SEMIVOLATILE ORGANIC COMPOUNDS (SVOCs)		µg/Kg			
Acenaphthylene	1,000	ND	ND	ND	430
Acetophenone	NL	ND	ND	ND	270
Anthracene	1,000,000	ND	ND	ND	1,500
Benzo(a)anthracene	7,000	ND	ND	ND	8,500
Benzo(a)pyrene	2,000	ND	ND	ND	12,000
Benzo(b)fluoranthene	7,000	ND	ND	ND	11,000
Benzo(g,h,i)perylene	1,000,000	ND	ND	ND	8,700
Benzo(k)fluoranthene	70,000	ND	ND	ND	9,000
Bis(2-ethylhexyl)phthalate	90,000	6,000	ND	ND	930,000
Carbazole	NL	ND	ND	ND	520
Chrysene	70,000	ND	ND	ND	6,200
Di-n-butylphthalate	NL	ND	ND	ND	860
Dibenz(a,h)anthracene	700	ND	ND	ND	2,400
Dibenzofuran	NL	ND	ND	ND	390
Fluoranthene	1,000,000	ND	ND	ND	13,000
Fluorene	1,000,000	ND	ND	ND	440
Indeno(1,2,3-cd)pyrene	7,000	ND	ND	ND	6,400
Naphthalene	4,000	ND	ND	ND	680
Phenanthrene	10,000	ND	ND	ND	4,800
Pyrene	1,000,000	ND	ND	ND	13,000
POLYCHLORINATED BIPHENYLS (PCBs)		µg/Kg			
Total PCBs	1,000	1,630	ND	ND	12,100
PESTICIDES		µg/Kg			
4,4'-DDE	6,000	ND	5.2	ND	NA
4,4'-DDT	6,000	ND	4.7 P	ND	NA
METALS		mg/Kg			
Aluminum*	*	9,000	17,000	13,000	9,600
Antimony	20	ND	ND J1	ND J1	2.2 J1
Arsenic	20	3.4	7.3	6.2	5.1
Barium	1,000	35	30	20	48
Calcium	NL	1,300	1,000	500	5,300
Chromium	100	20	28	15	140
Cobalt*	*	5.2	8.0	3.6	6.4
Copper*	*	20	22	17	100
Iron*	*	12,000	22,000	13,000	140,000
Lead	200	58	14	20	600
Magnesium	NL	2,800	4,000	2,100	3,000
Manganese*	*	170	150	96	190
Nickel	600	12	17	11	15
Vanadium	400	18	39	22	21
Zinc	1,000	55	71	27	520
Mercury	20	NA	0.038	0.051	NA
Cyanide	30	ND	ND	ND	1.1 J3

NOTES:

Compounds are listed only if they were detected in at least one of the samples. Compounds that were analyzed for, but not detected, have been omitted.

mg/Kg = milligrams per Kilogram µg/Kg = micrograms per Kilogram Results are reported in the units noted.

NA = Parameter not analyzed. NL = Not Listed. ND = Not Detected. * = There is no MCP S-1 standard for this compound.

MCP S-1 = Massachusetts Contingency Plan Soil Category S-1 (Residential Soil) standard.

Values **bolded** and shaded exceed the Massachusetts Contingency Plan (MCP) Soil Category S-1 standard.

J1 = estimated value due to Matrix Spike (MS) value outside of acceptance criteria.

J3 = Estimated value due to Relative Percent Difference (RPD) results outside acceptance criteria.

P = The confirmation value exceeded 35% difference and is less than 100%. The lower value is reported.

TABLE 6
SUMMARY OF DUSTTRAK AIR MONITORING RESULTS
COLONIAL LACQUER & CHEMICAL CO. SITE
ASHLAND, MASSACHUSETTS

Date	Dustrack No.	Maximum	TWA	Location
6-Oct-15	1	0.063	0.003	West of manufacturing building excavation, near storage shed
6-Oct-15	7	0.065	0.006	South of manufacturing building excavation, toward back of site
6-Oct-15	4	0.113	0.003	East of manufacturing building excavation, near command post
6-Oct-15	9	0.328	0.004	Northeast of manufacturing building excavation, near front gate
7-Oct-15	1	0.42	0.009	West of manufacturing building excavation, near storage shed
7-Oct-15	7	0.018	0.009	South of manufacturing building excavation, toward back of site
7-Oct-15	4	0.046	0.007	East of manufacturing building excavation, near command post
7-Oct-15	9	0.028	0.008	Northeast of manufacturing building excavation, near front gate
8-Oct-15	1	0.088	0.01	West of manufacturing building excavation, near storage shed
8-Oct-15	7	0.03	0.008	South of manufacturing building excavation, toward back of site
8-Oct-15	4	0.018	0.007	East of manufacturing building excavation, near command post
8-Oct-15	9	0.1	0.008	Northeast of manufacturing building excavation, near front gate
9-Oct-15	1	0.03	0.017	West of manufacturing building excavation, near storage shed
9-Oct-15	7	0.028	0.017	South of manufacturing building excavation, toward back of site
9-Oct-15	4	0.052	0.018	East of manufacturing building excavation, near command post
9-Oct-15	9	0.076	0.019	Northeast of manufacturing building excavation, near front gate
12-Oct-15	1	0.025	0.012	West of manufacturing building excavation, near storage shed
12-Oct-15	7	0.028	0.013	South of manufacturing building excavation, toward back of site
12-Oct-15	4	0.054	0.012	East of manufacturing building excavation, near command post
12-Oct-15	9	0.087	0.014	Northeast of manufacturing building excavation, near front gate
14-Oct-15	1	0.019	0.006	South of manufacturing building excavation, toward back of site
14-Oct-15	7	0.027	0.006	Southeast of manufacturing building excavation
14-Oct-15	4	0.023	0.006	East of manufacturing building excavation, south of command post
14-Oct-15	9	0.07	0.009	Northeast of manufacturing building excavation, near front gate
15-Oct-15	1	0.025	0.004	South of manufacturing building excavation, toward back of site
15-Oct-15	7	0.015	0.005	Southeast of manufacturing building excavation
15-Oct-15	4	0.022	0.004	East of manufacturing building excavation, south of command post
15-Oct-15	9	0.022	0.005	Northeast of manufacturing building excavation, near front gate
16-Oct-15	1	0.039	0.009	West of staging area, on pad west of manufacturing building
16-Oct-15	7	0.047	0.008	Southwest of Gate No. 2 along Elliot Street

TABLE 6
SUMMARY OF DUSTTRAK AIR MONITORING RESULTS
COLONIAL LACQUER & CHEMICAL CO. SITE
ASHLAND, MASSACHUSETTS

Date	Dustrack No.	Maximum	TWA	Location
16-Oct-15	4	0.114	0.008	North of excavation in front of manufacturing building, between fence and Elliot Street
16-Oct-15	9	0.032	0.007	Northeast of manufacturing building excavation, near front gate
19-Oct-15	1	0.048	0.008	West of staging area, on pad west of manufacturing building
19-Oct-15	7	0.024	0.006	Southwest of Gate No. 2 along Elliot Street
19-Oct-15	4	0.033	0.005	North of excavation in front of manufacturing building, between fence and Elliot Street
19-Oct-15	9	0.015	0.004	Northeast of manufacturing building excavation, near front gate
20-Oct-15	1	0.07	0.004	AM - West of staging area, on pad west of manufacturing building
20-Oct-15	7	0.018	0.003	AM - Southwest of Gate No. 2 along Elliot Street
20-Oct-15	4	0.024	0.004	AM - North of excavation area, in front of manufacturing building between fence and Elliot Street
20-Oct-15	9	0.019	0.004	AM - Northeast of manufacturing building excavation, near front gate
20-Oct-15	1	0.099	0.013	PM - South of staging area on pad west of manufacturing building
20-Oct-15	7	0.084	0.012	PM - Southwest of Gate No. 2 along Elliot Street
20-Oct-15	4	0.271	0.013	PM - North of excavation in front of lab building, between fence and Elliot Street
20-Oct-15	9	0.071	0.011	PM - Between fence and stonewall at NW end of site, west of lab building excavation
21-Oct-15	1	0.05	0.029	South of staging area on pad west of manufacturing building
21-Oct-15	7	0.076	0.032	Southwest of Gate No. 2 along Elliot Street
21-Oct-15	4	0.168	0.031	North of excavation area in front of lab building, between fence and Elliot Street
21-Oct-15	9	0.114	0.029	Between fence and stonewall at NW end of site west of lab building
22-Oct-15	1	0.09	0.003	South of staging area on pad west of manufacturing building
22-Oct-15	7	0.352	0.019	Southwest of Gate No. 2 along Elliot Street
22-Oct-15	4	0.161	0.03	North of excavation area in front of lab building between fence and Elliot Street
22-Oct-15	9	0.09	0.028	Between fence and stonewall at NW end of site, west of lab building
23-Oct-15	1	0.107	0.022	Southwest of Gate No. 2 along Elliot Street
23-Oct-15	7	0.779	0.013	South of staging area on pad west of manufacturing building

TABLE 6
SUMMARY OF DUSTTRAK AIR MONITORING RESULTS
COLONIAL LACQUER & CHEMICAL CO. SITE
ASHLAND, MASSACHUSETTS

Date	Dustrack No.	Maximum	TWA	Location
23-Oct-15	4	0.076	0.003	South of lab building and excavation area
23-Oct-15	9	0.016	0.002	Between fence and stonewall at NW end of site, west of lab building
26-Oct-15	1	N/A	N/A	In woods south of lead drum pile - sampling port disconnected from instrument
26-Oct-15	7	0.223	0.008	In woods to southeast of drum piles
26-Oct-15	4	0.21	0.007	By trailer to northeast of drum piles
26-Oct-15	9	0.046	0.005	West of drum piles
27-Oct-15	1	0.119	0.012	In woods south of lead drum pile
27-Oct-15	7	0.13	0.011	In woods to southeast of drum piles
27-Oct-15	4	2.22	0.026	By trailer to northeast of drum piles
27-Oct-15	9	0.275	0.013	West of drum piles
28-Oct-15	1	0.071	0.01	In woods south of lead drum pile
28-Oct-15	7	0.042	0.009	In woods to southeast of drum piles
28-Oct-15	4	0.129	0.009	By trailer to northeast of drum piles
28-Oct-15	9	0.086	0.009	West of drum piles
30-Oct-15	1	0.032	0.003	In woods south of drum piles and excavation
30-Oct-15	7	0.107	0.006	North of excavation, by front gate
30-Oct-15	4	0.103	0.006	West of excavation
30-Oct-15	9	0.149	0.008	By trailer to northeast of drum piles, east of excavation
2-Nov-15	1	0.02	0.007	In woods southwest of drum piles and excavation
2-Nov-15	7	0.029	0.009	North of excavation, by front gate
2-Nov-15	4	0.065	0.009	West of excavation
2-Nov-15	9	0.09	0.009	By trailer to northeast of drum piles, east of excavation
3-Nov-15	1	0.113	0.01	Inside fence, in front of office building
3-Nov-15	7	0.136	0.012	Outside fence, west of secondary gate
3-Nov-15	4	0.122	0.01	South of lab building and excavation area
3-Nov-15	9	0.142	0.012	South of soil stockpile
4-Nov-15	1	0.299	0.018	By trailer
4-Nov-15	7	0.051	0.018	Outside fence, between manufacturing and office buildings
4-Nov-15	4	0.122	0.021	Southwest of non-hazardous drum pile

TABLE 6
SUMMARY OF DUSTTRAK AIR MONITORING RESULTS
COLONIAL LACQUER & CHEMICAL CO. SITE
ASHLAND, MASSACHUSETTS

Date	Dustrack No.	Maximum	TWA	Location
4-Nov-15	9	0.385	0.02	South of soil stockpile
5-Nov-15	1	0.059	0.009	West of soil stockpile
5-Nov-15	7	0.048	0.01	Near trailer east of stockpile
5-Nov-15	4	0.016	0.01	In woods south of stockpile
5-Nov-15	9	0.159	0.01	Near front gate north of stockpile (could view but not download data file)
9-Nov-15	1	0.452	0.004	In woods south of TSCA pile - abbreviated run
9-Nov-15	7	8530	0.004	Behind trailer northeast of TSCA pile - abbreviated run, maximum value from one data point upon instrument start up
9-Nov-15	4	0.019	0.004	By front gate - abbreviated run
9-Nov-15	9	0.035	0.003	West of stockpile - abbreviated run
12-Nov-15	1	0.048	0.021	North of fence, between manufacturing and office buildings
12-Nov-15	7	0.042	0.027	South of lead drum pile and excavation
12-Nov-15	4	0.044	0.022	East of TSCA drum pile
12-Nov-15	9	0.038	0.021	South of lab building and west of secondary stockpile
13-Nov-15	1	0.014	0.005	By front gate
13-Nov-15	7	0.024	0.005	By shed west of excavation
13-Nov-15	4	N/A	N/A	South of lead drum pile and excavation - port disconnected from instrument
13-Nov-15	9	0.235	0.008	North of fence, between manufacturing and office buildings
16-Nov-15	1	0.025	0.008	By front gate
16-Nov-15	7	0.064	0.012	North of fence, between manufacturing and office buildings
16-Nov-15	4	0.047	0.012	In woods to southwest of manufacturing building excavation
16-Nov-15	9	0.102	0.01	West of dirt road, south of secondary stockpile
17-Nov-15	1	0.013	0.002	By front gate
17-Nov-15	7	0.102	0.005	North of fence, between manufacturing and office buildings
17-Nov-15	4	0.071	0.006	In woods to west of manufacturing building excavation, near shed
17-Nov-15	9	0.132	0.005	West of dirt road, south of secondary stockpile
18-Nov-15	1	0.114	0.004	By front gate
18-Nov-15	7	0.246	0.021	North of fence, between manufacturing and office buildings
18-Nov-15	4	N/A	N/A	In woods to west of manufacturing building excavation, near shed - "Error, Laser, Flow" after 12 minutes

TABLE 6
SUMMARY OF DUSTTRAK AIR MONITORING RESULTS
COLONIAL LACQUER & CHEMICAL CO. SITE
ASHLAND, MASSACHUSETTS

Date	Dustrack No.	Maximum	TWA	Location
18-Nov-15	9	0.18	0.018	West of dirt road, south of secondary stockpile
19-Nov-15	4	0.05	0.006	By front gate
19-Nov-15	1	0.133	0.011	North of fence, between manufacturing and office buildings
19-Nov-15	4	0.05	0.006	In woods to southwest of manufacturing building excavation
19-Nov-15	7	0.053	0.004	West of secondary stockpile, south of lab building
20-Nov-15	9	0.151	0.013	North of fence, between manufacturing and office buildings
20-Nov-15	7	0.022	0.008	West of secondary stockpile, south of lab building

Air monitoring conducted using TSI, Inc., DustTrak II particulate meters.

All results in milligrams per cubic meter.

Site action level is 0.5 milligrams per cubic meter TWA - there were no exceedances.

No. = Number NW = Northwest N/A = Not Applicable

TSCA = Toxic Substances Control Act

TWA = Time-Weighted Average

PM = Afternoon

AM = Morning

TABLE 7
SUMMARY OF SOIL AND ASPHALT PILE SAMPLE ANALYTICAL RESULTS
COLONIAL LACQUER & CHEMICAL CO. SITE
ASHLAND, MASSACHUSETTS

SAMPLE LOCATION NUMBER:		DC-AA01
LABORATORY SAMPLE NUMBER:		1511H71-001
COMPOUND	MCP S-1	
SEMIVOLATILE ORGANIC COMPOUNDS (SVOCs)		µg/Kg
Benzo(b)fluoranthene	7,000	79 J
Bis(2-ethylhexyl)phthalate	90,000	3,900
Pyrene	1,000,000	110 J
POLYCHLORINATED BIPHENYLS (PCBs)		µg/Kg
Aroclor-1254	1,000	0.17
Total PCBs	1,000	0.17
PESTICIDES		µg/Kg
4,4'-DDT	6,000	18 DPJ
CHLORINATED HERBICIDES		µg/Kg
2,4-D	*	16 P
2,4-D	*	11 P
METALS		mg/Kg
Aluminum*	*	5,900
Antimony	20	0.6 J
Arsenic	20	2.3
Barium	1,000	43.8
Calcium	*	2,170
Chromium	100	22.5
Cobalt*	*	8.4
Copper*	*	26.6
Iron*	*	11,400
Lead	200	40.7
Magnesium	*	3,440
Manganese*	*	162
Mercury	20	0.03 J
Nickel	600	15.5
Potassium	*	1,840
Selenium	400	1.7
Sodium	*	79.2 J
Thallium	8	0.2 J
Vanadium	400	30.2
Zinc	1,000	65
		mg/Kg
Extractable Organic Halogens	*	272
Total Organic Carbon	*	12,000
Total Petroleum Hydrocarbons	1,000	5,030

NOTES:

Compounds are listed only if they were detected in at least one of the samples.

Compounds that were analyzed for, but not detected, have been omitted.

mg/Kg = milligrams per Kilogram µg/Kg = micrograms per Kilogram Results are reported in the units noted.

ND = Not Detected.

* = There is no MCP S-1 standard for this compound.

MCP S-1 = Massachusetts Contingency Plan Soil Category S-1 (Residential Soil) standard.

Values **bolded** and shaded exceed the Massachusetts Contingency Plan (MCP) Soil Category S-1 standard.

J = estimated value due to Matrix Spike (MS) value outside of acceptance criteria.

P = The confirmation value exceeded 35% difference and is less than 100%. The lower value is reported.

D = The value shown is from diluted analysis.

Appendix C

Photodocumentation Log

PHOTODOCUMENTATION LOG
Colonial Lacquer & Chemical Co. • Ashland, Massachusetts



SCENE: View of the front of the laboratory (lab) building and front fence line prior to vegetation clearing. Photograph taken facing northwest.

DATE: 12 June 2015

PHOTOGRAPHER: Haworth

TIME: 1440 hours

Camera: iPhone 5s



SCENE: View of the front of the lab building, secondary gate/entrance, with Eliot street to the right, prior to vegetation clearing. Photograph taken facing west.

DATE: 12 June 2015

PHOTOGRAPHER: Haworth

TIME: 1441 hours

Camera: iPhone 5s

PHOTODOCUMENTATION LOG
Colonial Lacquer & Chemical Co. • Ashland, Massachusetts



SCENE: View of the fence and the front of office building prior to vegetation clearing. Photograph taken facing southwest.

DATE: 12 June 2015

TIME: 1441 hours

PHOTOGRAPHER: Haworth

Camera: iPhone 5s



SCENE: View of the fence and the front of the manufacturing building prior to vegetation clearing. Photograph taken facing southwest.

DATE: 12 June 2015

TIME: 1441 hours

PHOTOGRAPHER: Haworth

Camera: iPhone 5s

PHOTODOCUMENTATION LOG
Colonial Lacquer & Chemical Co. • Ashland, Massachusetts



SCENE: View of the front of the manufacturing building prior to vegetation clearing. Photograph taken facing west.

DATE: 12 June 2015

TIME: 1442 hours

PHOTOGRAPHER: Haworth

Camera: iPhone 5s



SCENE: View of a drum carcass pile prior to vegetation clearing. Photograph taken facing southeast.

DATE: 12 June 2015

TIME: 1443 hours

PHOTOGRAPHER: Haworth

Camera: iPhone 5s

PHOTODOCUMENTATION LOG
Colonial Lacquer & Chemical Co. • Ashland, Massachusetts



SCENE: View of a drum carcass pile prior to vegetation clearing. Photograph taken facing east.

DATE: 12 June 2015

TIME: 1443 hours

PHOTOGRAPHER: Haworth

Camera: iPhone 5s



SCENE: View of a drum carcass pile prior to vegetation clearing. Photograph taken facing east.

DATE: 12 June 2015

TIME: 1444 hours

PHOTOGRAPHER: Haworth

Camera: iPhone 5s

PHOTODOCUMENTATION LOG
Colonial Lacquer & Chemical Co. • Ashland, Massachusetts



SCENE: View of the dirt road and uncontaminated area to the left, and manufacturing building and contaminated area to the right, prior to vegetation clearing. Photograph taken facing northwest.

DATE: 12 June 2015

TIME: 1452 hours

PHOTOGRAPHER: Haworth

Camera: iPhone 5s



SCENE: View of the southwest side of manufacturing building and contaminated area, prior to vegetation clearing. Photograph taken facing northeast.

DATE: 12 June 2015

TIME: 1452 hours

PHOTOGRAPHER: Haworth

Camera: iPhone 5s

PHOTODOCUMENTATION LOG
Colonial Lacquer & Chemical Co. • Ashland, Massachusetts



SCENE: View of the paved pad (used as second contaminated soil staging area) and rear of the office building, prior to vegetation clearing. Photograph taken facing northeast.

DATE: 12 June 2015

PHOTOGRAPHER: Haworth

TIME: 1453 hours

Camera: iPhone 5s



SCENE: View of the indented contaminated soil area on southeast side of the lab building prior to vegetation clearing. Photograph taken facing northwest.

DATE: 12 June 2015

PHOTOGRAPHER: Haworth

TIME: 1454 hours

Camera: iPhone 5s

PHOTODOCUMENTATION LOG
Colonial Lacquer & Chemical Co. • Ashland, Massachusetts



SCENE: View of the southwest corner of office building prior to vegetation clearing. Photograph taken facing northeast.

DATE: 12 June 2015

TIME: 1454 hours

PHOTOGRAPHER: Haworth

Camera: iPhone 5s

T
O
P



SCENE: View of the rear of the southeast side of the lab building after partial vegetation clearing. Photograph taken facing northwest.

DATE: 30 September 2015

TIME: 1230 hours

PHOTOGRAPHER: Haworth

Camera: iPhone 5s

PHOTODOCUMENTATION LOG
Colonial Lacquer & Chemical Co. • Ashland, Massachusetts



SCENE: View of the office trailer being delivered to site. Photograph taken facing southeast.

DATE: 1 October 2015

TIME: 1216 hours

PHOTOGRAPHER: Haworth

Camera: iPhone 5s



SCENE: View of office trailer being unloaded. Photograph taken facing southeast.

DATE: 1 October 2015

TIME: 1218 hours

PHOTOGRAPHER: Haworth

Camera: iPhone 5s

PHOTODOCUMENTATION LOG
Colonial Lacquer & Chemical Co. • Ashland, Massachusetts



SCENE: View of the office trailer during unloading. Photograph taken facing southeast.

DATE: 1 October 2015

TIME: 1219 hours

PHOTOGRAPHER: Haworth

Camera: iPhone 5s

T
O
P



SCENE: View of the interior of the office trailer after unloading.

DATE: 1 October 2015

TIME: 1629 hours

PHOTOGRAPHER: Haworth

Camera: iPhone 5s

PHOTODOCUMENTATION LOG
Colonial Lacquer & Chemical Co. • Ashland, Massachusetts



SCENE: View of the rear of the manufacturing building and contaminated area south of the manufacturing building, after vegetation clearing. Photograph taken facing west.

DATE: 6 October 2015

PHOTOGRAPHER: Callahan

TIME: 0832 hours

Camera: iPhone 6



SCENE: View of the pavement, dirt road, and uncontaminated area to the left, and contaminated area to the right, after vegetation clearing. Photograph taken facing southwest.

DATE: 6 October 2015

PHOTOGRAPHER: Callahan

TIME: 0832 hours

Camera: iPhone 6

PHOTODOCUMENTATION LOG
Colonial Lacquer & Chemical Co. • Ashland, Massachusetts



SCENE: View of a shed, dirt road, and uncontaminated area to the left, and manufacturing building and contaminated area to the right, after vegetation clearing. Photograph taken facing northwest.

DATE: 6 October 2015

TIME: 0833 hours

PHOTOGRAPHER: Callahan

Camera: iPhone 6



SCENE: View of the paved pad (used as second contaminated soil staging area) and rear of the office building, with side of manufacturing building and loading dock to the right, after vegetation clearing. Photograph taken facing northeast.

DATE: 6 October 2015

TIME: 0834 hours

PHOTOGRAPHER: Callahan

Camera: iPhone 6

PHOTODOCUMENTATION LOG
Colonial Lacquer & Chemical Co. • Ashland, Massachusetts



SCENE: View of the southeast side of the laboratory (lab) building to the left and rear of the office building to the right, with paved road between them, after vegetation clearing. Photograph taken facing northeast.

DATE: 6 October 2015

TIME: 0834 hours

PHOTOGRAPHER: Callahan

Camera: iPhone 6



SCENE: View of the rear of the lab building after vegetation clearing. Photograph taken facing northwest.

DATE: 6 October 2015

TIME: 0834 hours

PHOTOGRAPHER: Callahan

Camera: iPhone 6

PHOTODOCUMENTATION LOG
Colonial Lacquer & Chemical Co. • Ashland, Massachusetts



SCENE: View of the indented contaminated soil area on southeast side of the lab building after vegetation clearing. Photograph taken facing northwest.

DATE: 6 October 2015

PHOTOGRAPHER: Callahan

TIME: 0834 hours

Camera: iPhone 6



SCENE: View of Eliot Street to the left, northwest side of the manufacturing building to the front, and front of the office building to the right, after vegetation clearing. Photograph taken facing southeast.

DATE: 6 October 2015

PHOTOGRAPHER: Callahan

TIME: 0834 hours

Camera: iPhone 6

PHOTODOCUMENTATION LOG
Colonial Lacquer & Chemical Co. • Ashland, Massachusetts



SCENE: View of the northeast side of the lab building to the left, with contaminated soil area to the front, and the fence and Eliot Street to the right, after vegetation clearing. Photograph taken facing northwest.

DATE: 6 October 2015

TIME: 0834 hours

PHOTOGRAPHER: Callahan

Camera: iPhone 6



SCENE: View of contaminated soil to the front, with the northwest corner of the lab building to left, and fence along northwest property boundary to the right, after vegetation clearing. Photograph taken facing southwest.

DATE: 6 October 2015

TIME: 0832 hours

PHOTOGRAPHER: Callahan

Camera: iPhone 6

PHOTODOCUMENTATION LOG
Colonial Lacquer & Chemical Co. • Ashland, Massachusetts



SCENE: View of the contaminated area in the depression in the woods at the southern end of the property after excavation activities. Photograph taken facing west.

DATE: 6 October 2015

PHOTOGRAPHER: Callahan

TIME: 1323 hours

Camera: iPhone 6



SCENE: View of the contaminated area south of the manufacturing building during initial excavation activities. Photograph taken facing north.

DATE: 6 October 2015

PHOTOGRAPHER: Callahan

TIME: 1324 hours

Camera: iPhone 6

PHOTODOCUMENTATION LOG
Colonial Lacquer & Chemical Co. • Ashland, Massachusetts



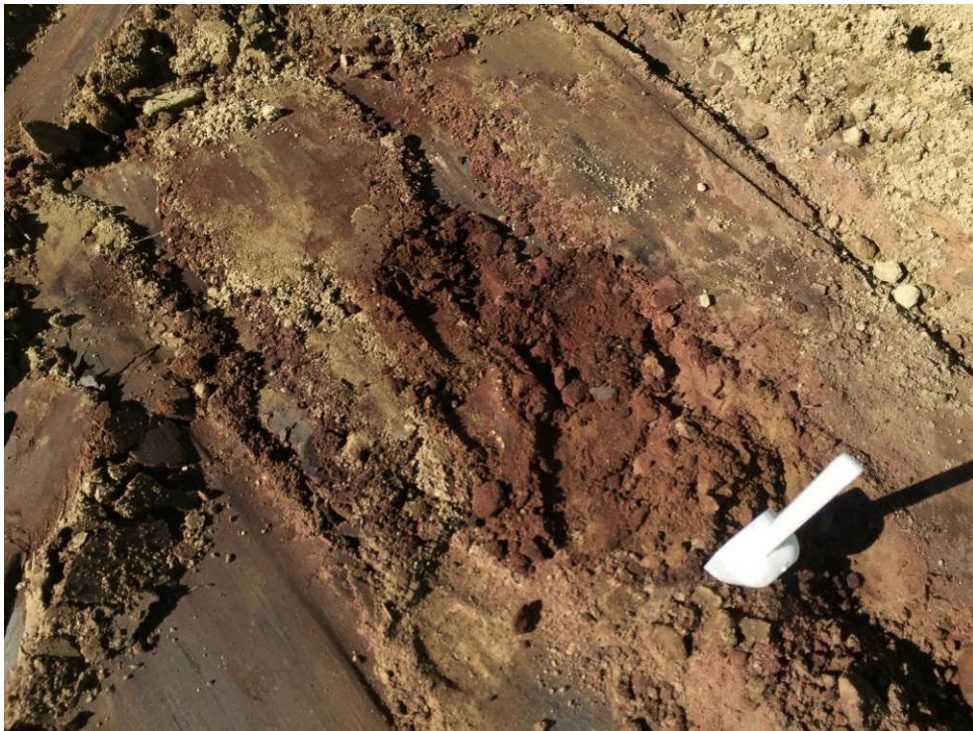
SCENE: View of sample RS01 and the red-stained soil in the 2-foot excavation south of the manufacturing building. Photograph taken facing north.

DATE: 7 October 2015

PHOTOGRAPHER: Callahan

TIME: 1015 hours

Camera: iPhone 6



SCENE: View of sample RS01 and close-up of the red-stained soil in 2-foot excavation south of the manufacturing building.

DATE: 7 October 2015

PHOTOGRAPHER: Callahan

TIME: 1019 hours

Camera: iPhone 6

PHOTODOCUMENTATION LOG
Colonial Lacquer & Chemical Co. • Ashland, Massachusetts



SCENE: View of sample RS02/SS-04/SS-114 following the excavation of the depression in the woods at the southern end of the site. Photograph taken facing west.

DATE: 9 October 2015

TIME: 1148 hours

PHOTOGRAPHER: Callahan

Camera: iPhone 6

T
O
P



SCENE: View of the liquid-containing drum south of the office building. Photograph taken facing northeast.

DATE: 9 October 2015

TIME: 1230 hours

PHOTOGRAPHER: Callahan

Camera: iPhone 6

PHOTODOCUMENTATION LOG
Colonial Lacquer & Chemical Co. • Ashland, Massachusetts



SCENE: View of sample RS04/SS-203 by the stake to the right, and RS05/SS-302 by the stake to the left, in the 2-foot excavation south of manufacturing building, and an area of asphalt that had been covered by approximately 6 inches of soil. Photograph taken facing southwest.

DATE: 9 October 2015 **TIME:** 1225 hours **PHOTOGRAPHER:** Callahan **Camera:** iPhone 6



SCENE: View of sample RS05/SS-302 by the stake to the right, and RS03/SS-301 by the orange bucket to the left, in 3-foot excavated areas south of manufacturing building, and a second area of asphalt on the left by the orange bucket. Photograph taken facing south.

DATE: 9 October 2015 **TIME:** 1225 hours **PHOTOGRAPHER:** Callahan **Camera:** iPhone 6

PHOTODOCUMENTATION LOG
Colonial Lacquer & Chemical Co. • Ashland, Massachusetts



SCENE: View of the contents of the drum south of the office building, which were sampled for disposal parameters.

DATE: 13 October 2015
PHOTOGRAPHER: Duffey

TIME: 1324 hours
CAMERA: XT-1080



SCENE: View of excavated soil being transferred from the northeast side of the manufacturing building via a bobcat to the staging area on the southeast side of the manufacturing building. Note DustTrack particulate monitor to the right of the main gate. Photograph taken southwest.

DATE: 13 October 2015
PHOTOGRAPHER: Duffey

TIME: 1324 hours
CAMERA: XT-1080

PHOTODOCUMENTATION LOG
Colonial Lacquer & Chemical Co. • Ashland, Massachusetts



SCENE: View of sample RS06, easternmost of three samples collected by the stone wall at the northern edge of 2-foot excavation northwest of the manufacturing building. Photograph taken facing north.

DATE: 16 October 2015

TIME: 0946 hours

PHOTOGRAPHER: Callahan

Camera: iPhone 6



SCENE: View of sample RS07, centermost of three samples collected by the stone wall at the northern edge of 2-foot excavation northwest of the manufacturing building. Photograph taken facing north.

DATE: 16 October 2015

TIME: 0946 hours

PHOTOGRAPHER: Callahan

Camera: iPhone 6

PHOTODOCUMENTATION LOG
Colonial Lacquer & Chemical Co. • Ashland, Massachusetts



SCENE: View of sample RS08, westernmost of three samples collected by the stone wall at the northern edge of 2-foot excavation northwest of the manufacturing building. Photograph taken facing north.

DATE: 16 October 2015

TIME: 0946 hours

PHOTOGRAPHER: Callahan

Camera: iPhone 6



SCENE: View of sample RS09/SS-400 in the 3-foot excavation north of the manufacturing building. Photograph taken facing northeast.

DATE: 16 October 2015

TIME: 1428 hours

PHOTOGRAPHER: Callahan

Camera: iPhone 6

PHOTODOCUMENTATION LOG
Colonial Lacquer & Chemical Co. • Ashland, Massachusetts



SCENE: View of sample RS10/SS-09 and RS11 (duplicate) in 2-foot excavation north of the manufacturing building. Photograph taken facing north.

DATE: 16 October 2015

PHOTOGRAPHER: Callahan

TIME: 1432 hours

Camera: iPhone 6



SCENE: View of sample RS12/SS-08 in the 2-foot excavation north of the manufacturing building. Photograph taken facing southeast.

DATE: 16 October 2015

PHOTOGRAPHER: Callahan

TIME: 1438 hours

Camera: iPhone 6

PHOTODOCUMENTATION LOG
Colonial Lacquer & Chemical Co. • Ashland, Massachusetts



SCENE: View of sample RS13/SS-205 in the 2-foot excavation south of the manufacturing building. Photograph taken facing east.

DATE: 16 October 2015

TIME: 1444 hours

PHOTOGRAPHER: Callahan

Camera: iPhone 6



SCENE: View of sample RS14/SS-07 in the 2-foot excavation south of the manufacturing building, a third area of asphalt, and the edge of the first excavated soil stockpile to the left. Photograph taken facing southwest.

DATE: 16 October 2015

TIME: 1447 hours

PHOTOGRAPHER: Callahan

Camera: iPhone 6

PHOTODOCUMENTATION LOG
Colonial Lacquer & Chemical Co. • Ashland, Massachusetts



SCENE: View of sample RS15/SS-06 in the 2-foot excavation south of the manufacturing building. Photograph taken facing northeast.

DATE: 16 October 2015

PHOTOGRAPHER: Callahan

TIME: 1450 hours

Camera: iPhone 6



SCENE: View of sample RS16/SS-206/SS-210 in the 2-foot excavation south of the manufacturing building. Photograph taken facing east.

DATE: 19 October 2015

PHOTOGRAPHER: Callahan

TIME: 0914 hours

Camera: iPhone 6

PHOTODOCUMENTATION LOG
Colonial Lacquer & Chemical Co. • Ashland, Massachusetts



SCENE: View of sample RS17/SS-110 (foreground) and RS18/SS404 (background) in the 2-foot excavation north of the manufacturing building. Photograph taken facing northeast.

DATE: 19 October 2015

PHOTOGRAPHER: Callahan

TIME: 0923 hours

Camera: iPhone 6



SCENE: View of the buckets staged on the manufacturing building loading dock. Photograph taken facing southeast.

DATE: 20 October 2015

PHOTOGRAPHER: Callahan

TIME: 1328 hours

Camera: iPhone 6

PHOTODOCUMENTATION LOG
Colonial Lacquer & Chemical Co. • Ashland, Massachusetts

T
O
P



SCENE: View of sample RS19 beyond the fence line along the western site boundary. Photograph taken facing southeast.

DATE: 20 October 2015
PHOTOGRAPHER: Haworth

TIME: 1452 hours
CAMERA: iPhone 5s



SCENE: View of sample RS20 beyond the fence line along the western site boundary. Photograph taken facing south.

DATE: 20 October 2015
PHOTOGRAPHER: Haworth

TIME: 1500 hours
CAMERA: iPhone 5s

PHOTODOCUMENTATION LOG
Colonial Lacquer & Chemical Co. • Ashland, Massachusetts



SCENE: View of the excavated area north of the lab building following a water service line break (not identified by DigSafe). Photograph taken facing west.

DATE: 21 October 2015

PHOTOGRAPHER: Callahan

TIME: 1351 hours

Camera: iPhone 6



SCENE: View of the unmarked (not identified by DigSafe) water service line damaged during excavation.

DATE: 21 October 2015

PHOTOGRAPHER: Haworth

TIME: 1434 hours

Camera: iPhone 5s

PHOTODOCUMENTATION LOG
Colonial Lacquer & Chemical Co. • Ashland, Massachusetts



SCENE: View of water service line excavation and Eliot Street, showing lack of DigSafe markings identifying the line. Photograph taken facing north.

DATE: 21 October 2015

PHOTOGRAPHER: Haworth

TIME: 1435 hours

Camera: iPhone 5s



SCENE: View of water service line excavation on left and Eliot Street on right, showing lack of DigSafe markings identifying the line. Photograph taken facing northwest.

DATE: 21 October 2015

PHOTOGRAPHER: Haworth

TIME: 1435hours

Camera: iPhone 5s

PHOTODOCUMENTATION LOG
Colonial Lacquer & Chemical Co. • Ashland, Massachusetts



SCENE: View of unmarked (not identified by DigSafe) sewer line damaged in same water service line excavation.

DATE: 21 October 2015
PHOTOGRAPHER: Haworth

TIME: 1439 hours
Camera: iPhone 5s



SCENE: View of temporary repair of damaged water service line. Photograph taken facing northeast.

DATE: 21 October 2015
PHOTOGRAPHER: Haworth

TIME: 1516 hours
Camera: iPhone 5s

PHOTODOCUMENTATION LOG
Colonial Lacquer & Chemical Co. • Ashland, Massachusetts



SCENE: View of sample RS22/SS-306 at the northwestern edge of the 2-foot excavation north of the manufacturing building. Photograph taken facing northwest.

DATE: 22 October 2015

PHOTOGRAPHER: Callahan

TIME: 1000 hours

Camera: iPhone 6



SCENE: View of sample RS21/SS-305 and RS28 (duplicate) in the 2-foot excavation northwest of the manufacturing building, and the second excavated soil stockpile on the paved area shown in photo taken on 6 October 2015 at 0834 hours. Photograph taken facing southwest.

DATE: 22 October 2015

TIME: 1000 hours

PHOTOGRAPHER: Callahan

Camera: iPhone 6

PHOTODOCUMENTATION LOG
Colonial Lacquer & Chemical Co. • Ashland, Massachusetts



SCENE: View of sample RS24/SS-207 at southern edge of the 3-foot excavation northwest of the manufacturing building, with rocks, vegetation, tree stumps, and contaminated soil stockpiled on the right. Photograph taken facing southwest.

DATE: 22 October 2015

TIME: 1008 hours

PHOTOGRAPHER: Callahan

Camera: iPhone 6



SCENE: View of sample RS23/SS-111 at the northern edge of the 3-foot excavation northwest of the manufacturing building. Photograph taken facing northeast.

DATE: 22 October 2015

TIME: 1015 hours

PHOTOGRAPHER: Callahan

Camera: iPhone 6

PHOTODOCUMENTATION LOG
Colonial Lacquer & Chemical Co. • Ashland, Massachusetts



SCENE: View of sample RS26 in the middle of the 1-foot excavation northwest of the manufacturing building. Photograph taken facing northeast.

DATE: 22 October 2015

PHOTOGRAPHER: Callahan

TIME: 1023 hours

Camera: iPhone 6



SCENE: View of excavation activities north of the lab building. Photograph taken facing northwest.

DATE: 22 October 2015

PHOTOGRAPHER: Callahan

TIME: 1024 hours

Camera: iPhone 6

PHOTODOCUMENTATION LOG
Colonial Lacquer & Chemical Co. • Ashland, Massachusetts



SCENE: View of sample PIPE1 at the intersection of the 1-foot and 3-foot excavation northwest of the manufacturing building. Note this pipe was included with excavated soil when the excavation was increased to a 3-foot depth in the area of Sample RS60. Photograph taken facing northeast.

DATE: 22 October 2015

TIME: 1027 hours

PHOTOGRAPHER: Callahan

Camera: iPhone 6



SCENE: View of sample PIPE1 and RS23/SS-111 to right, at the intersection of the 1-foot and 3-foot excavation northwest of the manufacturing building. Photograph taken facing northeast.

DATE: 22 October 2015

TIME: 1027 hours

PHOTOGRAPHER: Callahan

Camera: iPhone 6

PHOTODOCUMENTATION LOG
Colonial Lacquer & Chemical Co. • Ashland, Massachusetts



SCENE: View of contaminated soil stockpiling activities at the second stockpile west of the manufacturing building. Photograph taken facing southwest.

DATE: 22 October 2015

PHOTOGRAPHER: Callahan

TIME: 1028 hours

Camera: iPhone 6



SCENE: View of sample RS25/SS104 in the 1-foot excavation at the northwestern corner of the site. Photograph taken facing northwest.

DATE: 22 October 2015

PHOTOGRAPHER: Callahan

TIME: 1037 hours

Camera: iPhone 6

PHOTODOCUMENTATION LOG
Colonial Lacquer & Chemical Co. • Ashland, Massachusetts



SCENE: SCENE: View of sample RS27/SS-407 location at the bottom of the excavation, and temporary repair of water service line.

DATE: 22 October 2015

PHOTOGRAPHER: Callahan

TIME: 1043 hours

Camera: iPhone 6



SCENE: View of sample RS29/SS-202 in 3-foot excavation south of the manufacturing building. Photograph taken facing northwest.

DATE: 26 October 2015

PHOTOGRAPHER: Callahan

TIME: 1056 hours

Camera: iPhone 6

PHOTODOCUMENTATION LOG
Colonial Lacquer & Chemical Co. • Ashland, Massachusetts



SCENE: View of sample RS32/NobisSS10 in the 2-foot excavation along the southeastern side of the lab building. Photograph taken facing northwest.

DATE: 26 October 2015

PHOTOGRAPHER: Callahan

TIME: 1059 hours

Camera: iPhone 6



SCENE: View of sample RS31/NobisSS14 in the 2-foot excavation along the southeastern side of the lab building. Photograph taken facing northeast

DATE: 26 October 2015

PHOTOGRAPHER: Callahan

TIME: 1059 hours

Camera: iPhone 6

PHOTODOCUMENTATION LOG
Colonial Lacquer & Chemical Co. • Ashland, Massachusetts



SCENE: View of sample RS30/SS-105 in the 2-foot excavation along the eastern side of the lab building. Photograph taken facing northeast.

DATE: 26 October 2015

PHOTOGRAPHER: Callahan

TIME: 1108 hours

Camera: iPhone 6



SCENE: View of Bucket Numbers (Nos.) 1, 2, 3, and 4 prior to hazard categorization (hazcat) activities. Photograph taken facing west.

DATE: 27 October 2015

PHOTOGRAPHER: Callahan

TIME: 1015 hours

Camera: iPhone 6

PHOTODOCUMENTATION LOG
Colonial Lacquer & Chemical Co. • Ashland, Massachusetts



SCENE: View of the contents of Bucket No. 3.

DATE: 27 October 2015
PHOTOGRAPHER: Callahan

TIME: 1123 hours
Camera: iPhone 6



SCENE: View of the contents of Bucket No. 2.

DATE: 27 October 2015
PHOTOGRAPHER: Callahan

TIME: 1131 hours
Camera: iPhone 6

PHOTODOCUMENTATION LOG
Colonial Lacquer & Chemical Co. • Ashland, Massachusetts



SCENE: View of the contents of Bucket No. 2 during hazcat activities.

DATE: 27 October 2015
PHOTOGRAPHER: Callahan

TIME: 1132 hours
Camera: iPhone 6



SCENE: View of the contents of Bucket No. 4 on the stick.

DATE: 27 October 2015
PHOTOGRAPHER: Callahan

TIME: 1132 hours
Camera: iPhone 6

PHOTODOCUMENTATION LOG
Colonial Lacquer & Chemical Co. • Ashland, Massachusetts



SCENE: View of the contents of Bucket No. 1 in test tube during hazcat activities.

DATE: 27 October 2015
PHOTOGRAPHER: Callahan

TIME: 1133 hours
Camera: iPhone 6



SCENE: View of the Resource Conservation and Recovery Act (RCRA)-contaminated drum carcass pile. Photograph taken facing south.

DATE: 27 October 2015
PHOTOGRAPHER: Callahan

TIME: 1035 hours
Camera: iPhone 6

PHOTODOCUMENTATION LOG
Colonial Lacquer & Chemical Co. • Ashland, Massachusetts



SCENE: View of the non-hazardous drum carcasses and empty plastic containers collected from the site. Photograph taken facing southeast.

DATE: 27 October 2015

TIME: 1036 hours

PHOTOGRAPHER: Callahan

Camera: iPhone 6



SCENE: View of the Toxic Substances Control Act (TSCA) drum carcass pile. Photograph taken facing east.

DATE: 27 October 2015

TIME: 1036 hours

PHOTOGRAPHER: Callahan

Camera: iPhone 6

PHOTODOCUMENTATION LOG
Colonial Lacquer & Chemical Co. • Ashland, Massachusetts

T
O
P



SCENE: View of the TSCA drum carcass pile being loaded into roll-off container for disposal. Photograph taken facing southeast.

DATE: 27 October 2015

TIME: 1143 hours

PHOTOGRAPHER: Haworth

Camera: iPhone 5s



SCENE: View of the potential fill pipe along the southern side of the manufacturing building, with string used to attempt to measure depth. Photograph taken facing north.

DATE: 27 October 2015

TIME: 1331 hours

PHOTOGRAPHER: Callahan

Camera: iPhone 6

PHOTODOCUMENTATION LOG
Colonial Lacquer & Chemical Co. • Ashland, Massachusetts



SCENE: View of sample RS33 from the soil pile east of the office trailer. Photograph taken facing west.

DATE: 28 October 2015

TIME: 1103 hours

PHOTOGRAPHER: Callahan

Camera: iPhone 6



SCENE: View of the office trailer, with covered drum carcass piles in the background. Photograph taken facing southeast.

DATE: 29 October 2015

TIME: 1337 hours

PHOTOGRAPHER: Haworth

Camera: iPhone 5s

PHOTODOCUMENTATION LOG
Colonial Lacquer & Chemical Co. • Ashland, Massachusetts



SCENE: View of the paved road, Conex equipment storage box, hay bales, and covered drum carcass pile. Photograph taken facing southwest.

DATE: 29 October 2015

TIME: 1338 hours

PHOTOGRAPHER: Haworth

Camera: iPhone 5s



SCENE: View of hay bales and silt fencing installed for erosion control, with exclusion zone/contamination reduction zone signage. Photograph taken facing west.

DATE: 29 October 2015

TIME: 1338 hours

PHOTOGRAPHER: Haworth

Camera: iPhone 5s

PHOTODOCUMENTATION LOG
Colonial Lacquer & Chemical Co. • Ashland, Massachusetts



SCENE: View of stones and scrap metal removed from the excavation south of the manufacturing building and staged on an asphalt outcropping. Photograph taken facing northwest.

DATE: 29 October 2015

TIME: 1341 hours

PHOTOGRAPHER: Haworth

Camera: iPhone 5s



SCENE: View of the excavation around the covered contaminated soil stockpile south of the manufacturing building. Photograph taken facing northeast.

DATE: 29 October 2015

TIME: 1343 hours

PHOTOGRAPHER: Haworth

Camera: iPhone 5s

PHOTODOCUMENTATION LOG
Colonial Lacquer & Chemical Co. • Ashland, Massachusetts



SCENE: View of one aliquot of sample RS34, a 3-point composite, collected from the northeastern end of the 2-foot excavation south of the manufacturing building. Photograph taken facing northeast.

DATE: 30 October 2015

TIME: 0721 hours

PHOTOGRAPHER: Callahan

Camera: iPhone 6



SCENE: View of one aliquot of sample RS34, a 3-point composite, collected from the southeastern end of the 2-foot excavation south of the manufacturing building. Photograph taken facing southeast.

DATE: 30 October 2015

TIME: 0726 hours

PHOTOGRAPHER: Callahan

Camera: iPhone 6

PHOTODOCUMENTATION LOG
Colonial Lacquer & Chemical Co. • Ashland, Massachusetts



SCENE: View of one aliquot of sample RS34, a 3-point composite, collected from the 3-foot excavation south of the manufacturing building. Photograph taken facing north.

DATE: 30 October 2015

PHOTOGRAPHER: Callahan

TIME: 0742 hours

Camera: iPhone 6



SCENE: View of sample RS35/SS-202, resampled after additional excavation in the 3-foot excavation south of the manufacturing building. Photograph taken facing northwest.

DATE: 30 October 2015

PHOTOGRAPHER: Callahan

TIME: 0807 hours

Camera: iPhone 6

PHOTODOCUMENTATION LOG
Colonial Lacquer & Chemical Co. • Ashland, Massachusetts



SCENE: View of the high-visibility fencing installed as a marker at the bottom of the excavation south of the manufacturing building prior to backfilling activities, and large rocks segregated from excavated soil and later returned to the excavated area. Photograph taken facing northwest.

DATE: 30 October 2015

TIME: 0844 hours

PHOTOGRAPHER: Callahan

Camera: iPhone 6



SCENE: View of sample RS36/SS-103 in the 3-foot excavation north of the lab building. Photograph taken facing east.

DATE: 2 November 2015

TIME: 1426 hours

PHOTOGRAPHER: Callahan

Camera: iPhone 6

PHOTODOCUMENTATION LOG
Colonial Lacquer & Chemical Co. • Ashland, Massachusetts



SCENE: View of sample RS37/SS-209 in the 3-foot excavation north of the lab building. Photograph taken facing northwest.

DATE: 2 November 2015

PHOTOGRAPHER: Callahan

TIME: 1452 hours

Camera: iPhone 6



SCENE: View of sample RS38/SS-14/SS-27 in the 1-foot excavation north of the lab building. Photograph taken facing southeast.

DATE: 2 November 2015

PHOTOGRAPHER: Callahan

TIME: 1438hours

Camera: iPhone 6

PHOTODOCUMENTATION LOG
Colonial Lacquer & Chemical Co. • Ashland, Massachusetts



SCENE: View of sample RS39/SS-15 and RS46 (duplicate) in the 1-foot excavation north of the lab building. Photograph taken facing northwest.

DATE: 2 November 2015

TIME: 1444 hours

PHOTOGRAPHER: Callahan

Camera: iPhone 6



SCENE: View of sample RS40/SS-208 in the 1-foot excavation north of the lab building. Photograph taken facing northwest.

DATE: 2 November 2015

TIME: 1450 hours

PHOTOGRAPHER: Callahan

Camera: iPhone 6

PHOTODOCUMENTATION LOG
Colonial Lacquer & Chemical Co. • Ashland, Massachusetts



SCENE: View of sample RS41/SS-18 in the 1-foot excavation north of the lab building. Photograph taken facing northeast.

DATE: 2 November 2015
PHOTOGRAPHER: Callahan

TIME: 1455 hours
Camera: iPhone 6



SCENE: View of sample RS42/SS-307 in the 2-foot excavation west of the lab building. Photograph taken facing northeast.

DATE: 2 November 2015
PHOTOGRAPHER: Callahan

TIME: 1501 hours
Camera: iPhone 6

PHOTODOCUMENTATION LOG
Colonial Lacquer & Chemical Co. • Ashland, Massachusetts



SCENE: View of sample RS43/SS-308 in the 2-foot excavation west of the lab building. Photograph taken facing northeast.

DATE: 2 November 2015
PHOTOGRAPHER: Callahan

TIME: 1507 hours
Camera: iPhone 6

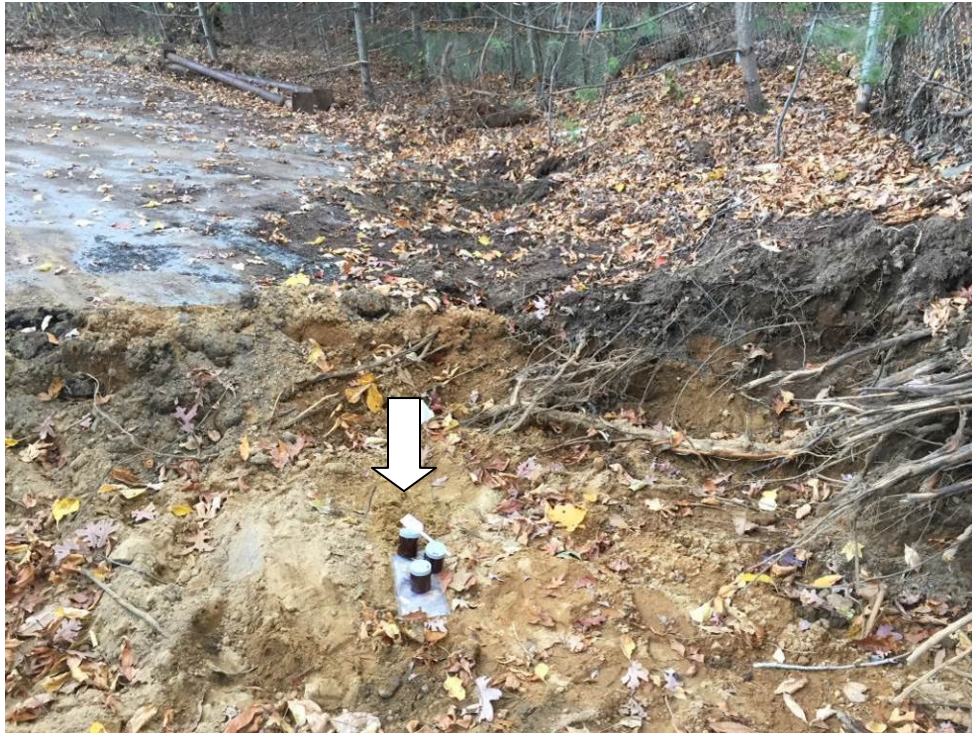


SCENE: View of sample RS44 in the 2-foot excavation west of the lab building. Photograph taken facing east.

DATE: 2 November 2015
PHOTOGRAPHER: Callahan

TIME: 1511 hours
Camera: iPhone 6

PHOTODOCUMENTATION LOG
Colonial Lacquer & Chemical Co. • Ashland, Massachusetts



SCENE: View of sample RS45/SS-108 in the 2-foot excavation southwest of the lab building. Photograph taken facing southwest.

DATE: 2 November 2015

TIME: 1515 hours

PHOTOGRAPHER: Callahan

Camera: iPhone 6



SCENE: View of sample RS47/SS-08 following additional excavation in the 2.5-foot excavation north of the manufacturing building. Photograph taken facing southeast.

DATE: 3 November 2015

TIME: 1101 hours

PHOTOGRAPHER: Callahan

Camera: iPhone 6

PHOTODOCUMENTATION LOG
Colonial Lacquer & Chemical Co. • Ashland, Massachusetts



SCENE: View of sample RS49/SS-09 following additional excavation in the 2.5-foot excavation north of the manufacturing building. Photograph taken facing southeast.

DATE: 3 November 2015

TIME: 1104 hours

PHOTOGRAPHER: Callahan

Camera: iPhone 6



SCENE: View of sample RS48 following additional excavation in the 2-foot excavation between the manufacturing and office buildings, with stockpiled contaminated soil to the rear. Photograph taken facing north.

DATE: 3 November 2015

TIME: 1107 hours

PHOTOGRAPHER: Callahan

Camera: iPhone 6

PHOTODOCUMENTATION LOG
Colonial Lacquer & Chemical Co. • Ashland, Massachusetts



SCENE: View of the soil sampled for one aliquot of a 3-point composite (RS50) from the excavation northwest of the manufacturing building.

DATE: 3 November 2015

TIME: 1254 hours

PHOTOGRAPHER: Callahan

Camera: iPhone 6



SCENE: View of the soil sampled for one aliquot of a 3-point composite (RS50) from the excavation northwest of the manufacturing building.

DATE: 3 November 2015

TIME: 1255 hours

PHOTOGRAPHER: Callahan

Camera: iPhone 6

PHOTODOCUMENTATION LOG
Colonial Lacquer & Chemical Co. • Ashland, Massachusetts



SCENE: View of the soil sampled for one aliquot of a 3-point composite (RS50) from the excavation northwest of the manufacturing building.

DATE: 3 November 2015

PHOTOGRAPHER: Callahan

TIME: 1255 hours

Camera: iPhone 6



SCENE: View of sample RS52/NobisSS14 following additional excavation in the 3-foot excavation east of the lab building. Photograph taken facing west.

DATE: 3 November 2015

PHOTOGRAPHER: Callahan

TIME: 1257 hours

Camera: iPhone 6

PHOTODOCUMENTATION LOG
Colonial Lacquer & Chemical Co. • Ashland, Massachusetts



SCENE: View of sample RS51/SS-105 following additional excavation in the 3-foot excavation east of the lab building. Photograph taken facing southeast.

DATE: 3 November 2015

PHOTOGRAPHER: Callahan

TIME: 1300 hours

Camera: iPhone 6



SCENE: View of the repaired water service line showing extended valve stem. Photograph taken facing south.

DATE: 5 November 2015

PHOTOGRAPHER: Callahan

TIME: 0711 hours

Camera: iPhone 6

PHOTODOCUMENTATION LOG
Colonial Lacquer & Chemical Co. • Ashland, Massachusetts



SCENE: View of the repaired water service line after backfilling with sand around pipe and valve. Photograph taken facing south.

DATE: 5 November 2015

TIME: 0826 hours

PHOTOGRAPHER: Callahan

Camera: iPhone 6



SCENE: View of the repaired water service line during backfilling activities. Photograph taken facing southwest.

DATE: 5 November 2015

TIME: 0929 hours

PHOTOGRAPHER: Callahan

Camera: iPhone 6

PHOTODOCUMENTATION LOG
Colonial Lacquer & Chemical Co. • Ashland, Massachusetts



SCENE: View of the repaired water service line during backfilling and compaction activities. Photograph taken facing southwest.

DATE: 5 November 2015

TIME: 0830 hours

PHOTOGRAPHER: Callahan

Camera: iPhone 6



SCENE: View of the repaired water service line during compaction activities. Photograph taken facing northwest.

DATE: 5 November 2015

TIME: 0840 hours

PHOTOGRAPHER: Callahan

Camera: iPhone 6

PHOTODOCUMENTATION LOG
Colonial Lacquer & Chemical Co. • Ashland, Massachusetts



SCENE: View of the repaired water service line after backfilling and compaction activities. Photograph taken northwest.

DATE: 5 November 2015
PHOTOGRAPHER: Callahan

TIME: 0926 hours
Camera: iPhone 6



SCENE: View of the indented contaminated soil excavated area along the southeastern side of the lab building following backfilling activities. Photograph taken facing northwest.

DATE: 10 November 2015
PHOTOGRAPHER: Callahan

TIME: 0840 hours
Camera: iPhone 6

PHOTODOCUMENTATION LOG
Colonial Lacquer & Chemical Co. • Ashland, Massachusetts



SCENE: View of the excavated area along the eastern side of the lab building following backfilling activities. Photograph taken facing northeast.

DATE: 10 November 2015

PHOTOGRAPHER: Callahan

TIME: 0840 hours

Camera: iPhone 6



SCENE: View of one aliquot of sample RS53, a 3-point composite, collected from the 3-foot excavation north of the lab building. Photograph taken facing northwest.

DATE: 10 November 2015

PHOTOGRAPHER: Callahan

TIME: 0842 hours

Camera: iPhone 6

PHOTODOCUMENTATION LOG
Colonial Lacquer & Chemical Co. • Ashland, Massachusetts



SCENE: View of one aliquot of sample RS53, a 3-point composite, collected from the 1-foot excavation north of the lab building. Photograph taken facing northwest.

DATE: 10 November 2015

PHOTOGRAPHER: Callahan

TIME: 0844 hours

Camera: iPhone 6



SCENE: View of one aliquot of sample RS53, a 3-point composite, collected from the 2-foot excavation west of the lab building. Photograph taken facing north.

DATE: 10 November 2015

PHOTOGRAPHER: Callahan

TIME: 0847 hours

Camera: iPhone 6

PHOTODOCUMENTATION LOG
Colonial Lacquer & Chemical Co. • Ashland, Massachusetts



SCENE: View of the covered contaminated soil stockpile south of the manufacturing building, surrounded by excavated and backfilled areas. Photograph taken facing west.

DATE: 10 November 2015

PHOTOGRAPHER: Haworth

TIME: 1213 hours

Camera: iPhone 5s



SCENE: View of covered contaminated soil stockpile south of the manufacturing building, surrounded by excavated and backfilled areas. Photograph taken facing northeast.

DATE: 10 November 2015

PHOTOGRAPHER: Haworth

TIME: 1218 hours

Camera: iPhone 5s

PHOTODOCUMENTATION LOG
Colonial Lacquer & Chemical Co. • Ashland, Massachusetts



SCENE: View of the northwest corner of the excavated area south of the manufacturing building, with an excavated and backfilled area in foreground, an asphalt outcropping to rear, and the covered contaminated soil stockpile to the right. Photograph taken facing northeast.

DATE: 10 November 2015

TIME: 1219 hours

PHOTOGRAPHER: Haworth

Camera: iPhone 5s



SCENE: View of the covered contaminated soil stockpile in second location on the paved pad south of the office building. Photograph taken facing northeast.

DATE: 10 November 2015

TIME: 1220 hours

PHOTOGRAPHER: Haworth

Camera: iPhone 5s

PHOTODOCUMENTATION LOG
Colonial Lacquer & Chemical Co. • Ashland, Massachusetts



SCENE: View of the indented area on the southeast side of the lab building following excavation and backfilling. Photograph taken facing north.

DATE: 10 November 2015

PHOTOGRAPHER: Haworth

TIME: 1221 hours

Camera: iPhone 5s



SCENE: View of the excavated area north of the lab building prior to backfilling. Photograph taken facing northwest.

DATE: 10 November 2015

PHOTOGRAPHER: Haworth

TIME: 1222 hours

Camera: iPhone 5s

PHOTODOCUMENTATION LOG
Colonial Lacquer & Chemical Co. • Ashland, Massachusetts



SCENE: View of the excavated area west of the lab building prior to backfilling. Photograph taken facing southwest.

DATE: 10 November 2015
PHOTOGRAPHER: Haworth

TIME: 1223 hours
Camera: iPhone 5s



SCENE: View of excavation being conducted between the manufacturing and office buildings. Photograph taken facing southwest.

DATE: 10 November 2015
PHOTOGRAPHER: Haworth

TIME: 1224 hours
Camera: iPhone 5s

PHOTODOCUMENTATION LOG
Colonial Lacquer & Chemical Co. • Ashland, Massachusetts



SCENE: View of contaminated soil load-out being conducted south of the manufacturing building. Photograph taken facing southwest.

DATE: 12 November 2015

TIME: 0952 hours

PHOTOGRAPHER: Haworth

Camera: iPhone 5s



SCENE: View of sample RS54 collected from the northeastern end of the former location of the TSCA drum carcass pile. Photograph taken facing north.

DATE: 12 November 2015

TIME: 1008 hours

PHOTOGRAPHER: Callahan

Camera: iPhone 6

PHOTODOCUMENTATION LOG
Colonial Lacquer & Chemical Co. • Ashland, Massachusetts



SCENE: View of sample RS55 collected from the southwestern end of the former location of the TSCA drum carcass pile. Photograph taken facing north.

DATE: 12 November 2015

PHOTOGRAPHER: Callahan

TIME: 1011 hours

Camera: iPhone 6



SCENE: View of sample RS59/SS-06 collected following additional excavation in the 3-foot excavation south of the manufacturing building. Photograph taken facing southwest.

DATE: 12 November 2015

PHOTOGRAPHER: Callahan

TIME: 1019 hours

Camera: iPhone 6

PHOTODOCUMENTATION LOG
Colonial Lacquer & Chemical Co. • Ashland, Massachusetts



SCENE: View of sample RS58 collected from the western end of the former location of the RCRA-contaminated drum carcass pile. Photograph taken facing north.

DATE: 12 November 2015

PHOTOGRAPHER: Callahan

TIME: 1026 hours

Camera: iPhone 6



SCENE: View of sample RS57 collected at the eastern end of the former location of the RCRA-contaminated drum carcass pile. Photograph taken facing northwest.

DATE: 12 November 2015

PHOTOGRAPHER: Callahan

TIME: 1032 hours

Camera: iPhone 6

PHOTODOCUMENTATION LOG
Colonial Lacquer & Chemical Co. • Ashland, Massachusetts



SCENE: View of sample RS56 collected from the former location of the non-hazardous drum carcass pile. Photograph taken facing north.

DATE: 12 November 2015

TIME: 1043 hours

PHOTOGRAPHER: Callahan

Camera: iPhone 6



SCENE: View of sample RS60 following additional excavation in the 3-foot excavation between the manufacturing and office buildings. Photograph taken facing east.

DATE: 12 November 2015

TIME: 1411 hours

PHOTOGRAPHER: Callahan

Camera: iPhone 6

PHOTODOCUMENTATION LOG
Colonial Lacquer & Chemical Co. • Ashland, Massachusetts



SCENE: View of sample RS61/SS-101 collected in the 3-foot excavation south of the manufacturing building. Photograph taken facing northwest.

DATE: 17 November 2015

PHOTOGRAPHER: Callahan

TIME: 1237 hours

Camera: iPhone 6



SCENE: View of sample RS62/SS-204/SS-211 collected in the 2-foot excavation south of the manufacturing building. Photograph taken facing northwest.

DATE: 17 November 2015

PHOTOGRAPHER: Callahan

TIME: 1242 hours

Camera: iPhone 6

PHOTODOCUMENTATION LOG
Colonial Lacquer & Chemical Co. • Ashland, Massachusetts

T
O
P



SCENE: View of sample RS63/SS-300 collected in the 3-foot excavation south of the manufacturing building. Photograph taken facing south.

DATE: 17 November 2015

TIME: 1256 hours

PHOTOGRAPHER: Callahan

Camera: iPhone 6



SCENE: View of sample RS64/SS-100 collected in the 3-foot excavation south of the manufacturing building. Photograph taken facing north.

DATE: 17 November 2015

TIME: 1304 hours

PHOTOGRAPHER: Callahan

Camera: iPhone 6

PHOTODOCUMENTATION LOG
Colonial Lacquer & Chemical Co. • Ashland, Massachusetts



SCENE: View of sample RS65/SS-402 following additional excavation in the 2.5-foot excavation north of the manufacturing building. Photograph taken facing north.

DATE: 17 November 2015

PHOTOGRAPHER: Callahan

TIME: 1327 hours

Camera: iPhone 6



SCENE: View of contaminated soil load-out being conducted south of the office building. Photograph taken facing east.

DATE: 18 November 2015

PHOTOGRAPHER: Haworth

TIME: 1159 hours

Camera: iPhone 5s

PHOTODOCUMENTATION LOG
Colonial Lacquer & Chemical Co. • Ashland, Massachusetts



SCENE: View of contaminated soil load-out being conducted south of the office building. Photograph taken facing northeast.

DATE: 18 November 2015

TIME: 0800 hours

PHOTOGRAPHER: Haworth

Camera: iPhone 5s



SCENE: View of contaminated soil load-out being conducted south of the office building. Photograph taken facing northeast.

DATE: 18 November 2015

TIME: 1159 hours

PHOTOGRAPHER: Haworth

Camera: iPhone 5s

PHOTODOCUMENTATION LOG
Colonial Lacquer & Chemical Co. • Ashland, Massachusetts



SCENE: View of the excavation south of the manufacturing building after removal of and excavation under the contaminated soil stockpile. Photograph taken facing northeast.

DATE: 19 November 2015

PHOTOGRAPHER: Haworth

TIME: 1133 hours

Camera: iPhone 5s



SCENE: View of the excavation south of the manufacturing building after removal of and excavation under the contaminated soil stockpile, showing darker soil mixed with debris. Photograph taken facing east.

DATE: 19 November 2015

PHOTOGRAPHER: Haworth

TIME: 1135 hours

Camera: iPhone 5s

PHOTODOCUMENTATION LOG
Colonial Lacquer & Chemical Co. • Ashland, Massachusetts



SCENE: View of the excavation south of the manufacturing building after removal of and excavation under the contaminated soil stockpile, showing darker soil mixed with debris. Photograph taken facing east.

DATE: 19 November 2015

TIME: 1136 hours

PHOTOGRAPHER: Haworth

Camera: iPhone 5s



SCENE: View of sample RS70 collected as a 3-point composite in the 3-foot excavation south of the manufacturing building. On the right is soil excavated from 2 to 3 feet during the week of 16 November 2015, and stockpiled within the excavation area on an asphalt outcropping while awaiting analytical results. Photograph taken facing southwest.

DATE: 20 November 2015

TIME: 1356 hours

PHOTOGRAPHER: Callahan

Camera: iPhone 6

PHOTODOCUMENTATION LOG
Colonial Lacquer & Chemical Co. • Ashland, Massachusetts



SCENE: View of the area marked for additional excavation south of sample RS63/SS-300, south of the manufacturing building. Photograph taken facing south.

DATE: 20 November 2015

PHOTOGRAPHER: Callahan

TIME: 1423 hours

Camera: iPhone 6



SCENE: View of sample RS66 in the additional excavated area south of sample RS63/SS-300 at the 1-foot depth. Photograph taken facing southeast.

DATE: 20 November 2015

PHOTOGRAPHER: Callahan

TIME: 1426 hours

Camera: iPhone 6

PHOTODOCUMENTATION LOG
Colonial Lacquer & Chemical Co. • Ashland, Massachusetts



SCENE: View of sample RS67 in the additional excavated area south of sample RS63/SS-300 at the 2-foot depth. Photograph taken facing southeast.

DATE: 20 November 2015

PHOTOGRAPHER: Callahan

TIME: 1428 hours

Camera: iPhone 6



SCENE: View of sample RS68 in the additional excavated area south of sample RS63/SS-300 at the 3-foot depth. Photograph taken facing southeast.

DATE: 20 November 2015

PHOTOGRAPHER: Callahan

TIME: 1434 hours

Camera: iPhone 6

PHOTODOCUMENTATION LOG
Colonial Lacquer & Chemical Co. • Ashland, Massachusetts



SCENE: View of sample RS69 in the additional excavated area near sample RS63/SS-300 at the 4.5-foot depth showing burnt building debris and blackened soil.

DATE: 20 November 2015

PHOTOGRAPHER: Callahan

TIME: 1439 hours

Camera: iPhone 6



SCENE: View of sample RS69 in the additional excavated area near sample RS63/SS-300 at the 4.5-foot depth.

DATE: 20 November 2015

PHOTOGRAPHER: Callahan

TIME: 1439 hours

Camera: iPhone 6

PHOTODOCUMENTATION LOG
Colonial Lacquer & Chemical Co. • Ashland, Massachusetts



SCENE: View of sample RS73 east of the former location of the non-hazardous drum carcass pile at the 0-3 inch depth, with area around location of RS56 outlined in spray paint for additional excavation. Photograph taken facing northwest.

DATE: 20 November 2015

TIME: 1443 hours

PHOTOGRAPHER: Callahan

Camera: iPhone 6



SCENE: View of sample RS72 north of the former location of the non-hazardous drum carcass pile at the 0-3 inch depth, with area around location of RS56 outlined in spray paint for additional excavation. Photograph taken facing west.

DATE: 20 November 2015

TIME: 1444 hours

PHOTOGRAPHER: Callahan

Camera: iPhone 6

PHOTODOCUMENTATION LOG
Colonial Lacquer & Chemical Co. • Ashland, Massachusetts



SCENE: View of sample RS71 northeast of the former location of the non-hazardous drum carcass pile at the 0-3 inch depth. Photograph taken facing northwest.

DATE: 20 November 2015

PHOTOGRAPHER: Callahan

TIME: 1445 hours

Camera: iPhone 6



SCENE: View of sample RS74 at the former location of the non-hazardous drum carcass pile near sample RS56, after the 6-inch excavation. Photograph taken facing northwest.

DATE: 20 November 2015

PHOTOGRAPHER: Callahan

TIME: 1459 hours

Camera: iPhone 6

PHOTODOCUMENTATION LOG
Colonial Lacquer & Chemical Co. • Ashland, Massachusetts

T
O
P



SCENE: View of the excavated area north of the manufacturing building during backfilling, showing high-visibility fencing installed as a marker at the bottom of the excavation, and large rocks returned to the excavation as part of backfilling. Photograph taken facing northwest.

DATE: 1 December 2015

TIME: 0822 hours

PHOTOGRAPHER: Haworth

CAMERA: iPhone 5s



SCENE: View of the excavated area south of the manufacturing building during backfilling, showing high-visibility fencing installed as a marker at the bottom of the excavation, and large rocks returned to the excavation as part of backfilling, with piles of clean backfill to the right. Photograph taken facing northeast.

DATE: 1 December 2015

TIME: 0823 hours

PHOTOGRAPHER: Haworth

CAMERA: iPhone 5s

PHOTODOCUMENTATION LOG
Colonial Lacquer & Chemical Co. • Ashland, Massachusetts



SCENE: View of the second contaminated soil stockpile south of the office building during load-out. Photograph taken facing northeast.

DATE: 1 December 2015

TIME: 0825 hours

PHOTOGRAPHER: Haworth

CAMERA: iPhone 5s



SCENE: View of the covered RCRA drum carcass pile prior to load-out. Photograph taken facing southeast.

DATE: 1 December 2015

TIME: 0827 hours

PHOTOGRAPHER: Haworth

CAMERA: iPhone 5s

PHOTODOCUMENTATION LOG
Colonial Lacquer & Chemical Co. • Ashland, Massachusetts



SCENE: View of the former location of non-hazardous drum carcass pile to the left following load-out, and the pre-existing pile of soil mixed with asphalt in center. Photograph taken facing south.

DATE: 1 December 2015

TIME: 0828 hours

PHOTOGRAPHER: Haworth

CAMERA: iPhone 5s



SCENE: View of the former location of non-hazardous drum carcass pile after load-out and 6-inch excavation. Photograph taken facing south.

DATE: 3 December 2015

TIME: 1340 hours

PHOTOGRAPHER: Haworth

CAMERA: iPhone 5s

PHOTODOCUMENTATION LOG
Colonial Lacquer & Chemical Co. • Ashland, Massachusetts



SCENE: View of the former location of RCRA drum carcass pile following load-out. Photograph taken south.

DATE: 3 December 2015
PHOTOGRAPHER: Haworth

TIME: 1341 hours
CAMERA: iPhone 5s



SCENE: View of the area between manufacturing and office buildings during backfilling. Photograph taken facing southwest.

DATE: 4 December 2015
PHOTOGRAPHER: Haworth

TIME: 0758 hours
CAMERA: iPhone 5s

PHOTODOCUMENTATION LOG
Colonial Lacquer & Chemical Co. • Ashland, Massachusetts



SCENE: View of the area south of manufacturing building following backfilling. Photograph taken facing west.

DATE: 7 December 2015

TIME: 1235 hours

PHOTOGRAPHER: Haworth

CAMERA: iPhone 5s



SCENE: View of the area south of manufacturing building following backfilling. Photograph taken facing west.

DATE: 7 December 2015

TIME: 1236 hours

PHOTOGRAPHER: Haworth

CAMERA: iPhone 5s

PHOTODOCUMENTATION LOG
Colonial Lacquer & Chemical Co. • Ashland, Massachusetts



SCENE: View of final site conditions north of the manufacturing building. Photograph taken facing northwest.

DATE: 7 December 2015

TIME: 1236 hours

PHOTOGRAPHER: Haworth

CAMERA: iPhone 5s



SCENE: View of final site conditions north of the manufacturing building. Photograph taken facing northwest.

DATE: 7 December 2015

TIME: 1238 hours

PHOTOGRAPHER: Haworth

CAMERA: iPhone 5s

PHOTODOCUMENTATION LOG
Colonial Lacquer & Chemical Co. • Ashland, Massachusetts



SCENE: View of final site conditions toward southern end of site, after completion of felled tree removal. Photograph taken facing southwest.

DATE: 7 December 2015

PHOTOGRAPHER: Haworth

TIME: 1239 hours

CAMERA: iPhone 5s



SCENE: View of final site conditions toward southwestern end of site, after completion of felled tree removal. Photograph taken facing southwest.

DATE: 7 December 2015

PHOTOGRAPHER: Haworth

TIME: 1240 hours

CAMERA: iPhone 5s

PHOTODOCUMENTATION LOG
Colonial Lacquer & Chemical Co. • Ashland, Massachusetts



SCENE: View of final site conditions in the excavated depression in the woods following backfilling. Photograph taken facing south.

DATE: 7 December 2015

TIME: 1242 hours

PHOTOGRAPHER: Haworth

CAMERA: iPhone 5s



SCENE: View of final site conditions in the excavated depression in the woods following backfilling.

DATE: 7 December 2015

TIME: 1243 hours

PHOTOGRAPHER: Haworth

CAMERA: iPhone 5s

PHOTODOCUMENTATION LOG
Colonial Lacquer & Chemical Co. • Ashland, Massachusetts



SCENE: View of final site conditions in the excavated depression in the woods following backfilling. Photograph taken facing south.

DATE: 7 December 2015

PHOTOGRAPHER: Haworth

TIME: 1243 hours

CAMERA: iPhone 5s



SCENE: View of final site conditions at the paved pad (used as second contaminated soil staging area) south of the office building, and backfilled area between the manufacturing and office buildings Photograph taken facing northeast.

DATE: 7 December 2015

PHOTOGRAPHER: Haworth

TIME: 1245 hours

CAMERA: iPhone 5s

PHOTODOCUMENTATION LOG
Colonial Lacquer & Chemical Co. • Ashland, Massachusetts



SCENE: View of final site conditions at the paved pad (used as second contaminated soil staging area) south of the office building, and backfilled area between the manufacturing and office buildings, with pile of clean backfill to the left. Photograph taken facing northeast.

DATE: 7 December 2015

PHOTOGRAPHER: Haworth

TIME: 1245 hours

CAMERA: iPhone 5s



SCENE: View of final site conditions north of the manufacturing building, showing restored chain-link fence. Photograph taken facing northwest.

DATE: 7 December 2015

PHOTOGRAPHER: Haworth

TIME: 1325 hours

CAMERA: iPhone 5s

PHOTODOCUMENTATION LOG
Colonial Lacquer & Chemical Co. • Ashland, Massachusetts



SCENE: View of final site conditions at the office building. Photograph taken facing west.

DATE: 7 December 2015

TIME: 1326 hours

PHOTOGRAPHER: Haworth

CAMERA: iPhone 5s



SCENE: View of final site conditions north of the lab building. Photograph taken facing southeast.

DATE: 7 December 2015

TIME: 1328 hours

PHOTOGRAPHER: Haworth

CAMERA: iPhone 5s

PHOTODOCUMENTATION LOG
Colonial Lacquer & Chemical Co. • Ashland, Massachusetts



SCENE: View of final site conditions west of the lab building. Photograph taken facing southwest.

DATE: 7 December 2015

TIME: 1330 hours

PHOTOGRAPHER: Haworth

CAMERA: iPhone 5s



SCENE: View of final site conditions west of the lab building. Photograph taken facing southwest.

DATE: 7 December 2015

TIME: 1330 hours

PHOTOGRAPHER: Haworth

CAMERA: iPhone 5s

PHOTODOCUMENTATION LOG
Colonial Lacquer & Chemical Co. • Ashland, Massachusetts



SCENE: View of final site conditions north of the lab building. Photograph taken facing southeast.

DATE: 7 December 2015
PHOTOGRAPHER: Haworth

TIME: 1331 hours
CAMERA: iPhone 5s



SCENE: View of final site conditions west of the lab building. Photograph taken facing north.

DATE: 7 December 2015
PHOTOGRAPHER: Haworth

TIME: 1332 hours
CAMERA: iPhone 5s

PHOTODOCUMENTATION LOG
Colonial Lacquer & Chemical Co. • Ashland, Massachusetts



SCENE: View of final site conditions west of the lab building. Photograph taken facing north.

DATE: 7 December 2015

TIME: 1332 hours

PHOTOGRAPHER: Haworth

CAMERA: iPhone 5s



SCENE: View of final site conditions north of the office building. Photograph taken facing northwest.

DATE: 7 December 2015

TIME: 1452 hours

PHOTOGRAPHER: Haworth

CAMERA: iPhone 5s

PHOTODOCUMENTATION LOG
Colonial Lacquer & Chemical Co. • Ashland, Massachusetts



SCENE: View of final site conditions around the northern end of the lab building, showing silt fence and paved road leading to secondary gate and Eliot Street. Photograph taken facing west.

DATE: 7 December 2015

PHOTOGRAPHER: Haworth

TIME: 1452 hours

CAMERA: iPhone 5s



SCENE: View of final site conditions at the paved pad (used as second contaminated soil staging area) south of the office building, backfilled area between the manufacturing and office buildings, and northwest side of manufacturing building. Photograph taken facing east.

DATE: 7 December 2015

PHOTOGRAPHER: Haworth

TIME: 1500 hours

CAMERA: iPhone 5s

PHOTODOCUMENTATION LOG
Colonial Lacquer & Chemical Co. • Ashland, Massachusetts



SCENE: View of final site conditions at the paved pad (used as second contaminated soil staging area) south of the office building, backfilled area between the manufacturing and office buildings, and southwest side of office building. Photograph taken facing northeast.

DATE: 7 December 2015

PHOTOGRAPHER: Haworth

TIME: 1501 hours

CAMERA: iPhone 5s



SCENE: View of final site conditions at the paved pad (used as second contaminated soil staging area) south of the office building, and northwest side of manufacturing building. Photograph taken facing south.

DATE: 7 December 2015

PHOTOGRAPHER: Haworth

TIME: 1503 hours

CAMERA: iPhone 5s

PHOTODOCUMENTATION LOG
Colonial Lacquer & Chemical Co. • Ashland, Massachusetts



SCENE: View of final site conditions of the road area southwest of the manufacturing building. Photograph taken facing southeast.

DATE: 7 December 2015

PHOTOGRAPHER: Haworth

TIME: 1506 hours

CAMERA: iPhone 5s



SCENE: View of final site conditions at the lab building and the road leading to Eliot Street, following backfilling activities. Silt fence, earthen berm, and hay bales put in place to minimize backfill migrating onto Eliot Street. Photograph taken facing northeast.

DATE: 8 December 2015

PHOTOGRAPHER: Duffey

TIME: 0841 hours

CAMERA: XT-1080

PHOTODOCUMENTATION LOG
Colonial Lacquer & Chemical Co. • Ashland, Massachusetts



SCENE: View of final site conditions at the lab building to the left, office building to the right, and road leading to Eliot Street. Photograph taken facing northeast.

DATE: 8 December 2015

PHOTOGRAPHER: Duffey

TIME: 0841 hours

CAMERA: XT-1080



SCENE: View of final site conditions south of the manufacturing building, with hay spread over backfill and silt fence established for erosion control on the right, and the former drum carcass area to the left. Photograph taken facing northwest.

DATE: 8 December 2015

PHOTOGRAPHER: Duffey

TIME: 0903 hours

CAMERA: XT-1080

PHOTODOCUMENTATION LOG
Colonial Lacquer & Chemical Co. • Ashland, Massachusetts



SCENE: View of final site conditions of the backfilled road area south of the manufacturing building. Stakes and caution tape established to identify two slip/trip hazards for site workers were left in place. Photograph taken facing northwest.

DATE: 8 December 2015

TIME: 0822 hours

PHOTOGRAPHER: Duffey

CAMERA: XT-1080